

Appendix 2D – Controls in Northern Victoria (Site Numbers 407217A to 409711A)

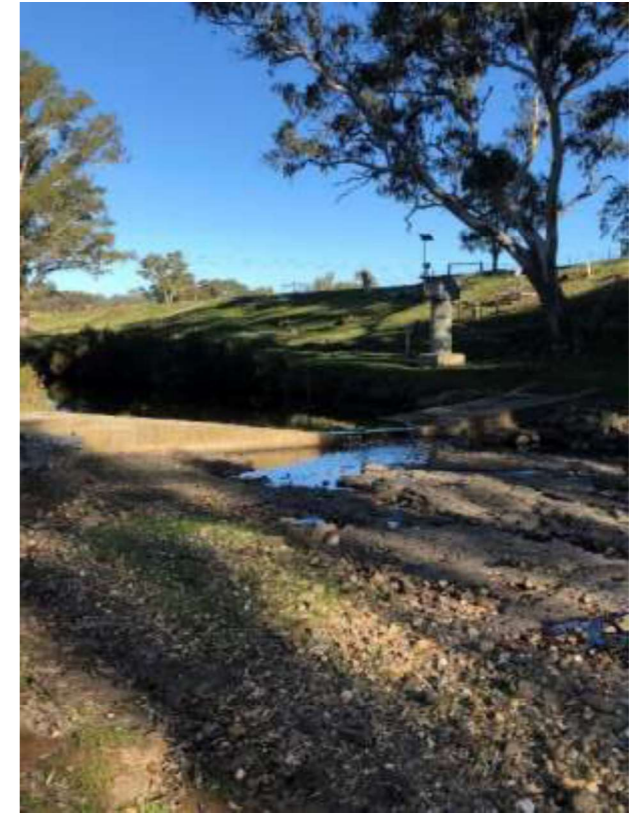
407217A



407220



407221B



407222A



407224D



407227A



407229A



407230B



407236B



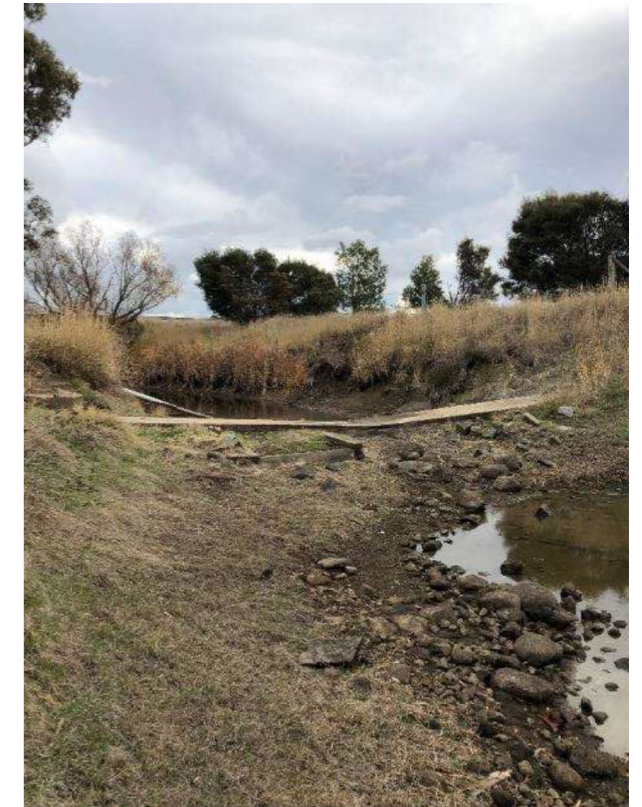
407237A



407238A



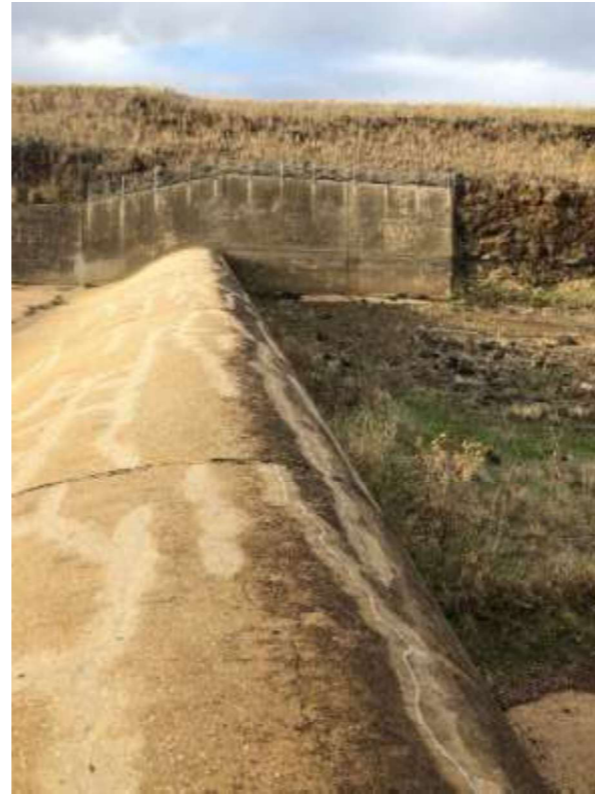
407239A



407240A



407244A



407246A



407248A



407249A



407251A



407252A



407253A



407254A



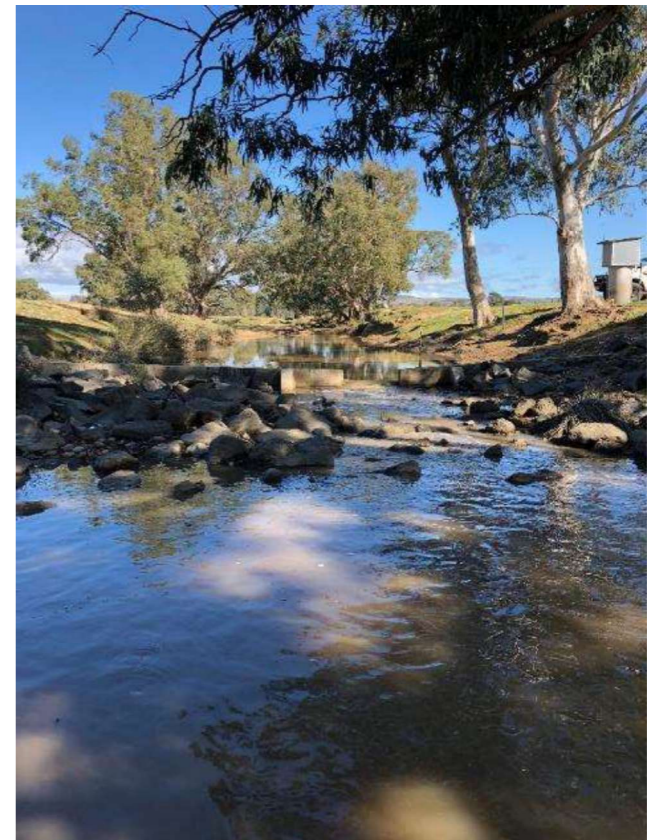
407255B



407285A



407288A



407300A



407311A



407314A



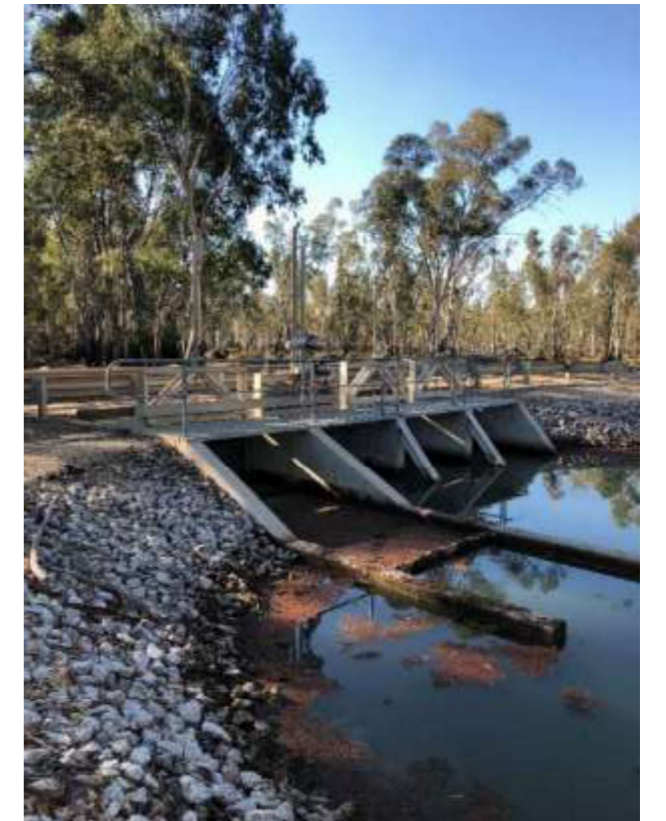
407315A



407319A



407338A



407339A



407340A



407381A



407712A



407732A



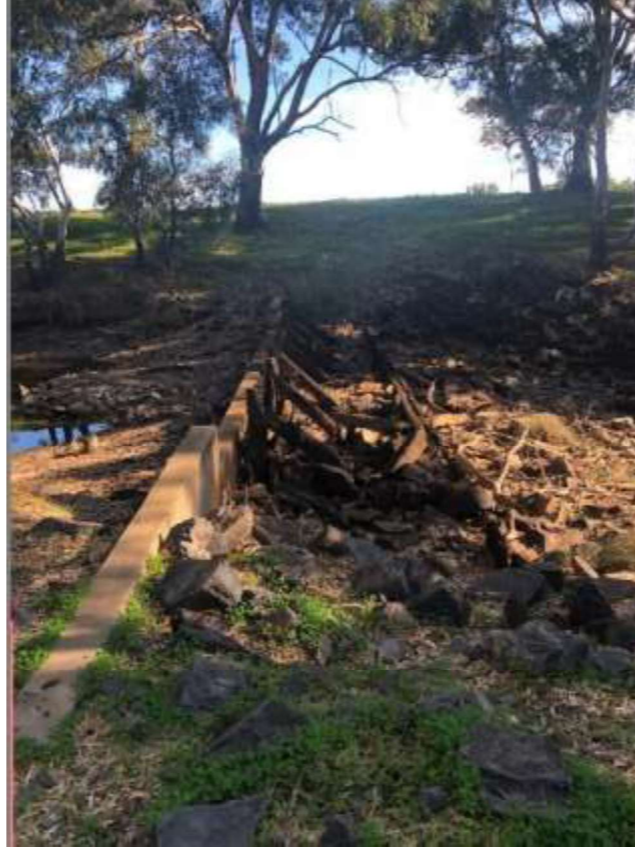
407735A



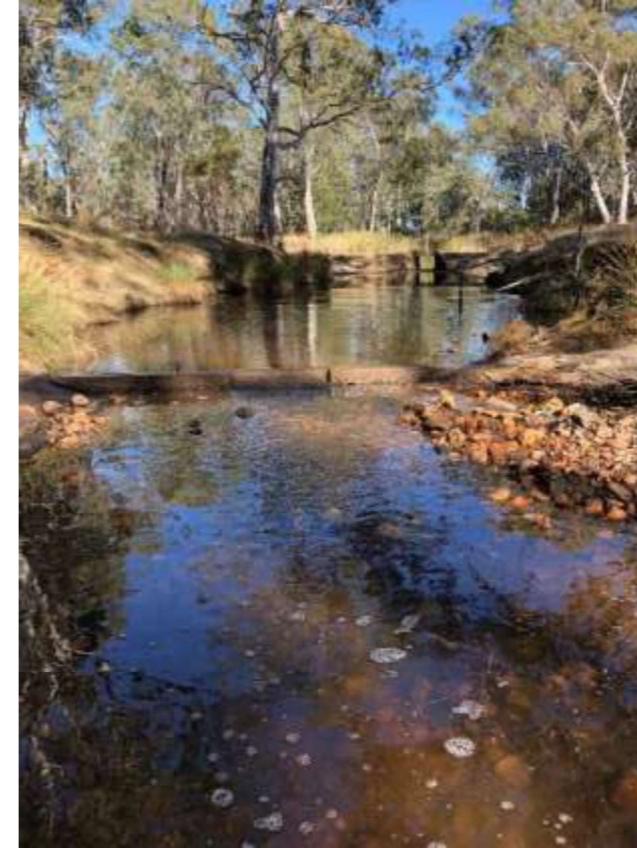
407779A



408200A



408202A



408203B



408206B



408209A



408212A



409701



409711A



409712A



414212A



414702A

