

Appendix 2C – Controls in Northern Victoria (Site Numbers 405720A to 407215C)

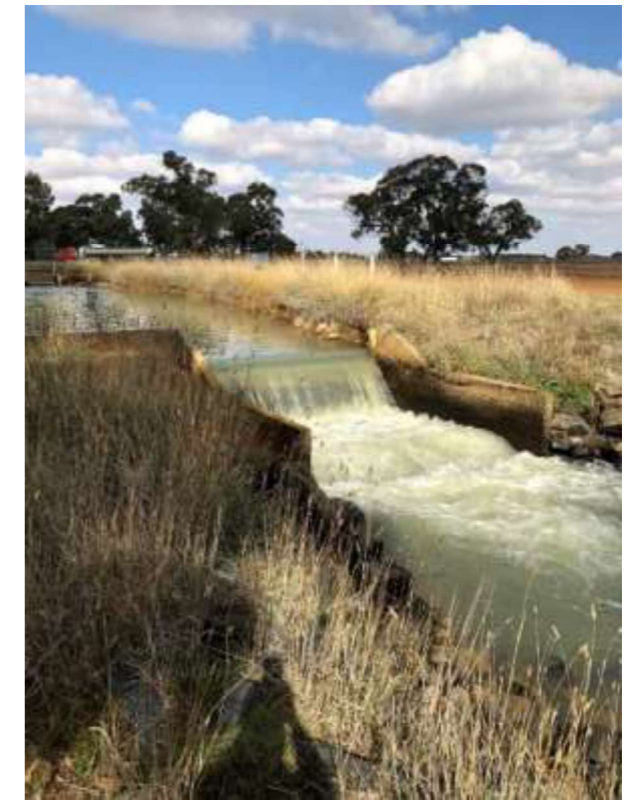
405720A



405730B



405738A



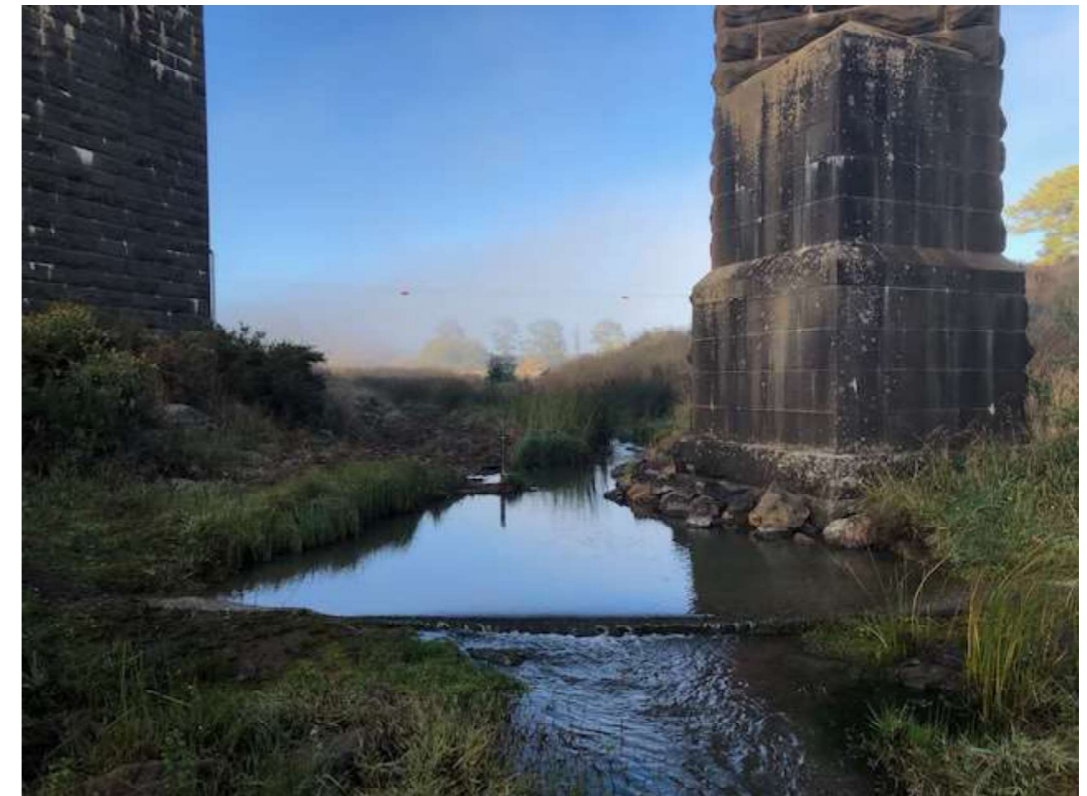
405758A



405779A



406200B



406201B



406202C



406208B



406210A



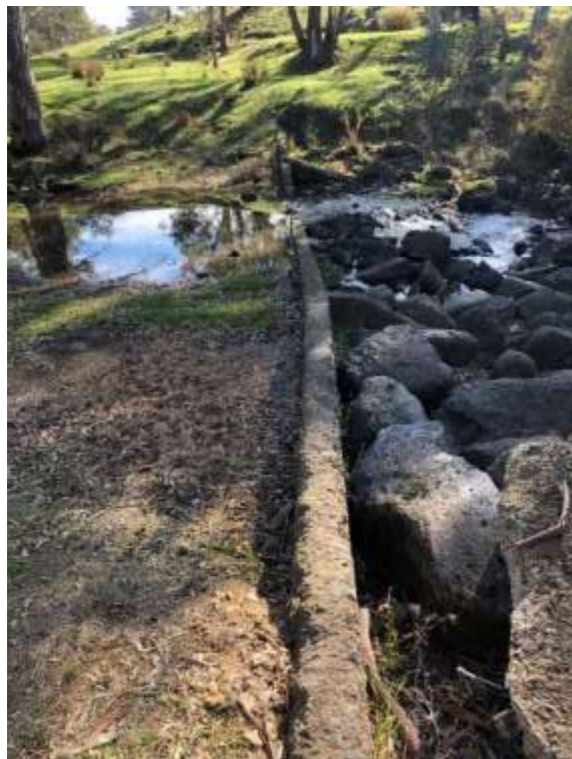
406213C



406214A



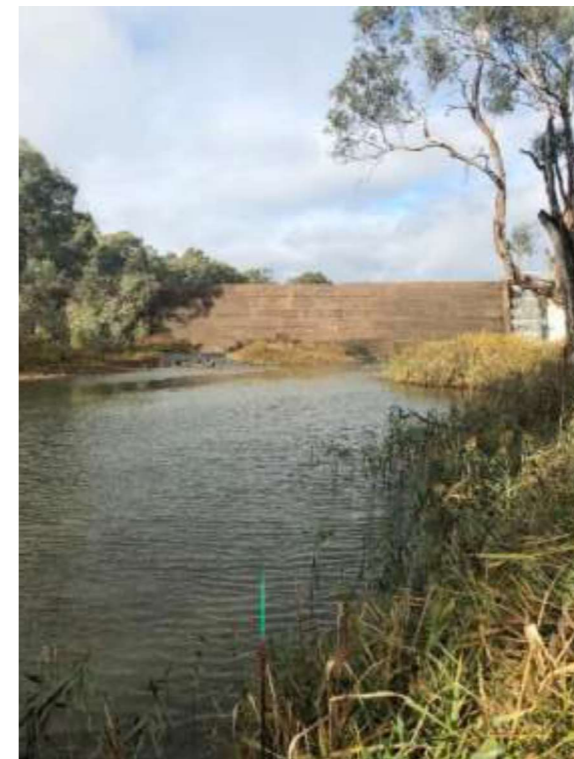
406215A



406216A



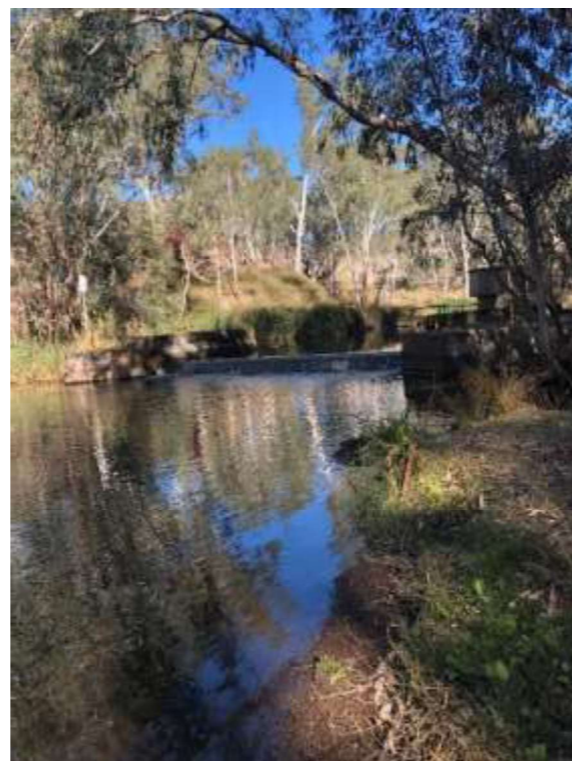
406218A



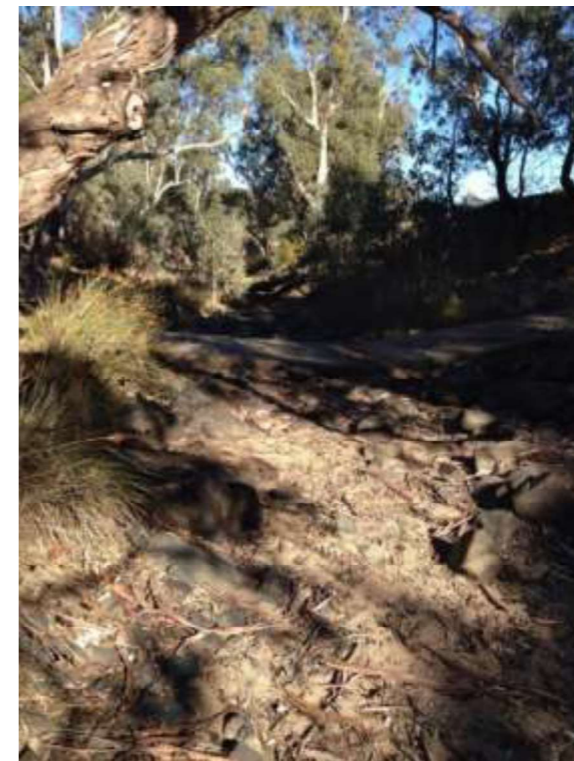
406224A



406225A



406226A



406235A



406250A



406262A



406263A



406264A



406266A



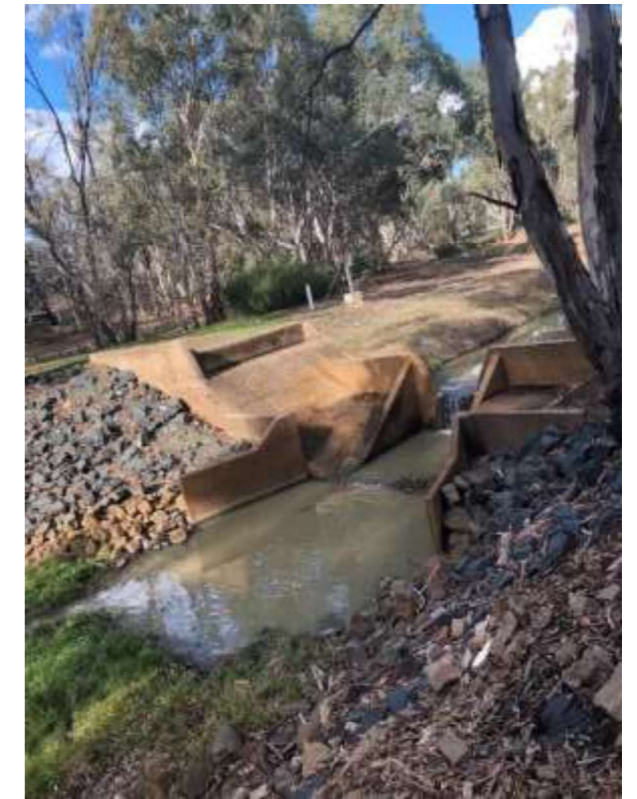
406280A



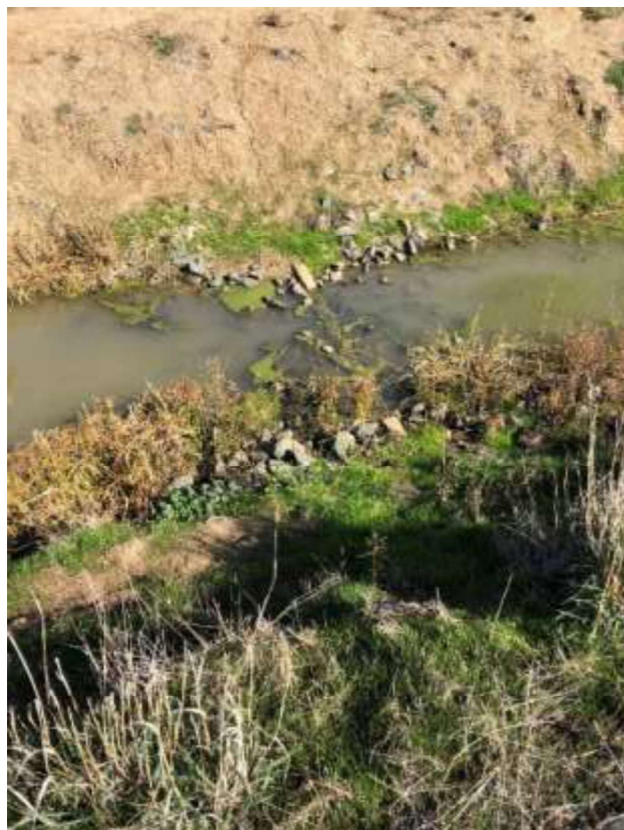
406281A



406704A



406731C



406744A



406756A



406758A



406764A



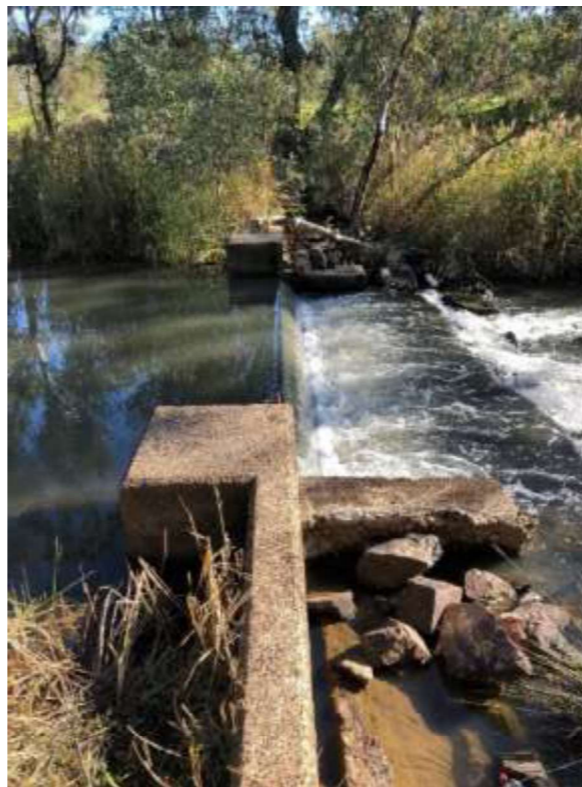
406766A



407202C



407203B



407205A



407209A



407210D



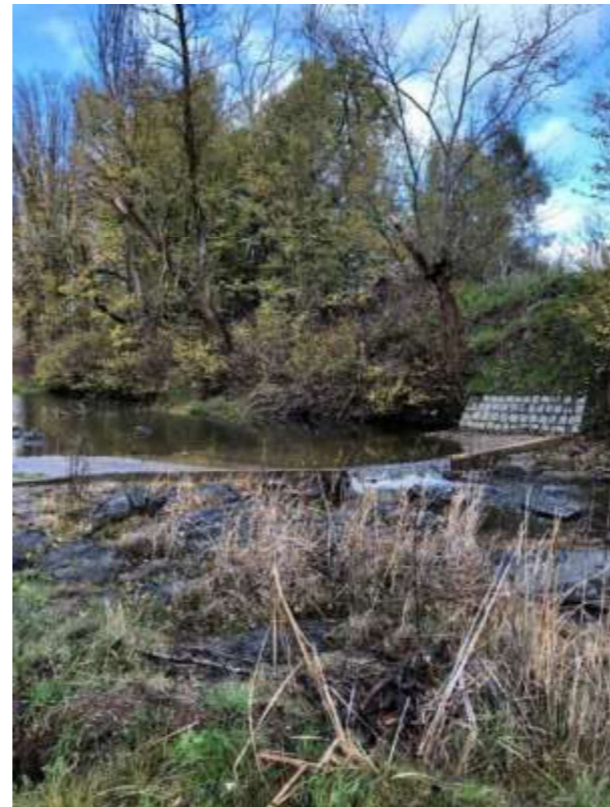
407211B



407213C



407214A



407215C

