

Port Phillip Bay (Western Shoreline) and Bellarine Peninsula Ramsar Site Boundary Description

Technical Report



Published by the Victorian Government Department of Environment and Primary Industries Melbourne, December 2013

© The State of Victoria Department of Environment and Primary Industries Melbourne 2013

This publication is copyright. No part may be reproduced by any process except in accordance with the provisions of the *Copyright Act 1968*.

Authorised by the Victorian Government, 8 Nicholson Street, East Melbourne.

ISBN 978-1-74242-098-1(online)

For more information contact the DEPI Customer Service Centre 136 186

Citation: DEPI (2013) Port Phillip Bay (Western Shoreline) and Bellarine Peninsula Ramsar Site Boundary Description Technical Report. Department of Environment and Primary Industries, East Melbourne, Victoria.

Disclaimer

This publication may be of assistance to you but the State of Victoria and its employees do not guarantee that the publication is without flaw of any kind or is wholly appropriate for your particular purposes and therefore disclaims all liability for any error, loss or other consequence which may arise from you relying on any information in this publication.

Accessibility

If you would like to receive this publication in an accessible format, such as large print or audio, please telephone 136 186, or email customer.service@depi.vic.gov.au

Deaf, hearing impaired or speech impaired? Call us via the National Relay Service on 133 677 or visit www.relayservice.com.au

This document is also available in PDF format on the internet at www.depi.vic.gov.au

Cover photo: Yvette Baker July 2010.

Contents

Introduction	1
Methodology of RAMSAR 100 GIS layer boundary realignment	2
Location	3
Written description of the Port Phillip Bay (Western Shoreline) and Bellarine Peninsula Ramsar Site boundary	4
Section 1: Coastline from Skeleton Creek to Point Cooke	4
Section 2: Block from Werribee River to Avalon Airfield.	4
Section 3: Northern coastline of Corio Bay from Point Wilson to Limeburners Bay.	6
Section 4: Swan Bay.	6
Section 5: Mud Islands.	7
Section 6: Barwon Heads along Barwon River to inlet of Reedy Lake, including Lake Connewarre.	7
References	9
Appendix 1	10
Appendix 2	12
Appendix 3	13

Introduction

Ramsar wetlands are wetlands of international importance listed under the Convention on Wetlands (Ramsar, Iran 1971). Victoria has 11 wetlands listed under this convention including the Port Phillip Bay (Western Shoreline) and Bellarine Peninsula Ramsar Site.

It is a requirement of the Convention on Wetlands that a suitable map or maps are provided for each Ramsar wetland. The Department of Sustainability, Environment, Water, Population and Communities (SEWPAC), requires that both the written description and the spatial data of the Ramsar site boundaries are accurate. This information is used to gazette the boundary of the declared Ramsar wetland in accordance with Section 327 of the *Environment Protection and Biodiversity Conservation Act 1999* (EPBC Act). Under the EPBC Act there are requirements for approval of activities which have, or are likely to have a significant impact on the ecological character of a declared Ramsar wetland. Precise identification of site boundaries helps to ensure that the exact boundaries of the Ramsar site can be easily identified, which can facilitate compliance with the EPBC Act as well as its effective enforcement.

The RAMSAR100 spatial dataset is a polygon layer that identifies each Victorian Ramsar area individually. RAMSAR100 was produced in conjunction with a report describing each Ramsar site (DCNR 1995). The Department of Environment and Primary Industries (DEPI) is the custodian of RAMSAR100. Most of the line work in RAMSAR100 was initially derived from 1:100,000 reference data. Because of its broader scale, this data was not always consistent with the cadastre and other more accurate features that have now been used to better define the majority of the Port Phillip Bay (Western Shoreline) and Bellarine Peninsula Ramsar Site. The updated spatial definition of Port Phillip Bay (Western Shoreline) and Bellarine Peninsula Ramsar Site is identified in a new RAMSAR25 spatial dataset.

This report details the written description of the Port Phillip Bay (Western Shoreline) and Bellarine Peninsula Ramsar Site to explicitly define the Ramsar boundaries, along with accompanying maps.

Methodology of RAMSAR 100 GIS layer boundary realignment

An expert panel was convened to provide advice on the original intent of the Ramsar site boundaries based on the description in DCNR (1995) and the RAMSAR100 spatial dataset.

Certificates of Title were obtained as required from the Office of the Surveyor-General, Victoria, to further clarify the intent of the Ramsar boundary.

DEPI manages the RAMSAR100 spatial dataset. The RAMSAR100 boundary of the Ramsar site was used as a guide to select appropriate features from the following 1:25,000 datasets:

- Parks and Conservation Reserves (15 June 2011)
- Port Phillip Depth Contour at 1:25,000 (26 August 2010)
- Public Land Management (PLM25) (15 June 2011)
- Road Network 1:25,000 - Vicmap Transport – Road (27 March 2013)
- Vicmap Property (27 March 2013)
- Watercourse Network 1:25,000 – Vicmap Hydro (27 March 2013).

In locations where these datasets did not adequately represent the boundary, point coordinates were generated and/or features were traced from high resolution (35 cm pixels) digital aerial photography. The following images held by Land Victoria, DSE were used:

- [melbourne_2009jan03_air_vis_35cm_mga55.ecw](#)
- [portphillip_2009dec02_air_vis_35cm_mga55.ecw](#).

These datasets are represented in spatial products available through Vicmap¹ - <http://www.land.vic.gov.au>. Alternatively the Ramsar site boundaries can be viewed through the DEPI website, at Interactive Maps - <http://www.depi.vic.gov.au/about-depi/interactive-maps>.

A list of coordinates (latitude, longitude) and bearings is provided in Appendix 1. All coordinates listed in this document are based on the 1994 Geocentric Datum of Australia (GDA94).

All hectares stated in the body of the report have been calculated in the projection Albers Equal Area and rounded to the nearest whole number. Appendix 2 lists the hectares for each section of this Ramsar Site to the two nearest decimal points. Appendix 3 includes maps of this Ramsar Site.

¹ Terms and conditions do apply.

Location

The Port Phillip Bay (Western Shoreline) and Bellarine Peninsula Ramsar Site is located on the central coast of Victoria to the South West of Melbourne along the western shores of Port Phillip Bay (Figure 1). The site covers a total area of approximately 22,645 hectares.

The Port Phillip Bay (Western Shoreline) and Bellarine Peninsula Ramsar Site consists of a number of component areas. These include:

- coastline from Skeleton Creek to Point Cooke
- block from Werribee River to Avalon Airfield
- northern coastline of Corio Bay from Point Wilson to Limeburners Bay
- Swan Bay
- Mud Islands
- Barwon Heads along Barwon River to inlet of Reedy Lake, including Lake Connewarre.

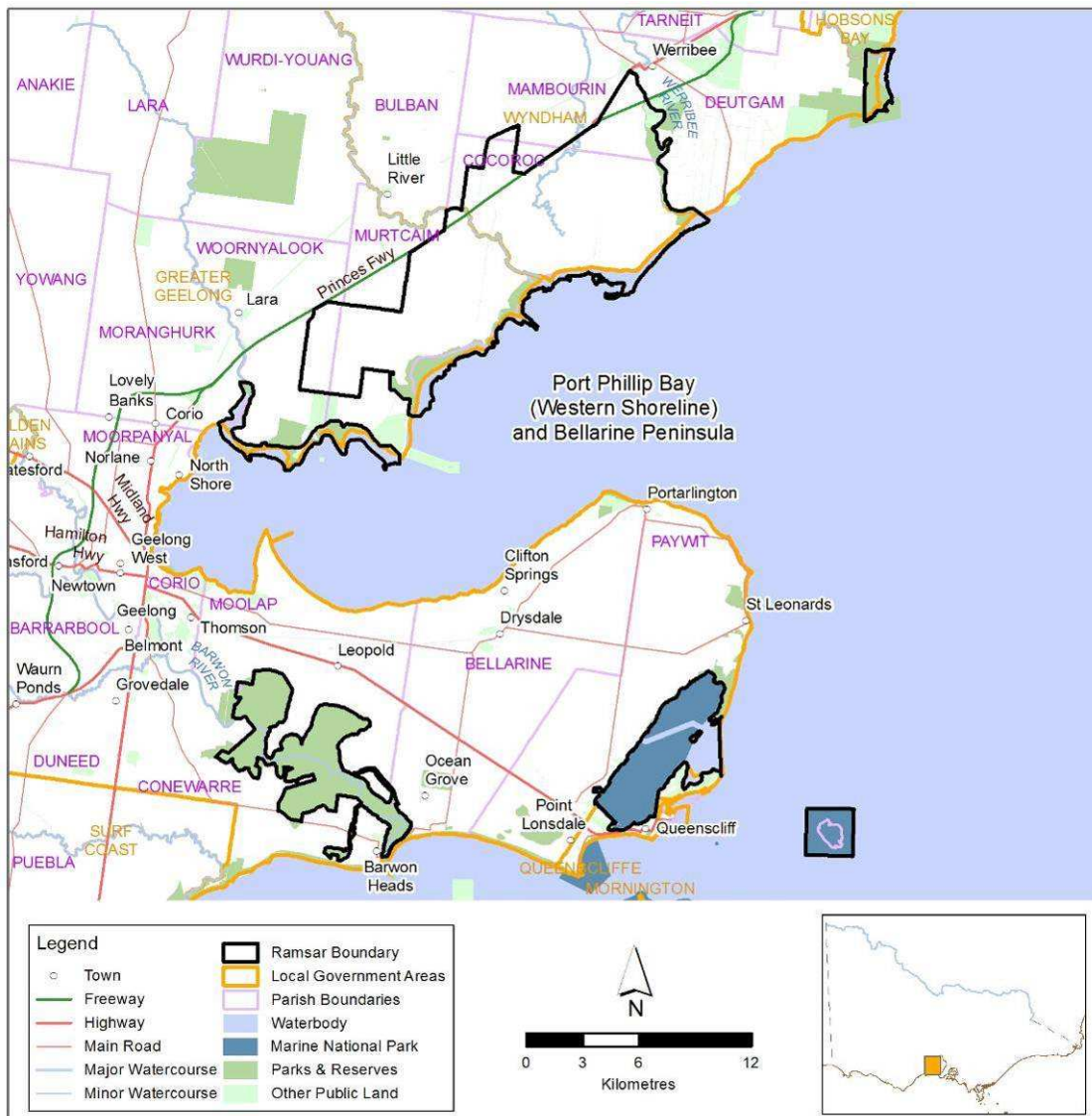


Figure 1: Port Phillip Bay (Western Shoreline) and Bellarine Peninsula Ramsar Site location.

Written description of the Port Phillip Bay (Western Shoreline) and Bellarine Peninsula Ramsar Site boundary

Points referred to in the description below are shown on the maps in Appendix 3. The generated boundary described below is represented by the spatial data in RAMSAR25 held in the DEPI Corporate Spatial Data Library. The datum used is Geographic Datum of Australia 1994(GDA94).

Section 1: Coastline from Skeleton Creek to Point Cooke

Section 1 is the northern most section of the Port Phillip Bay (Western Shoreline) covering approximately 421 hectares. It is located in an area extending south from Skeleton Creek to Point Cooke and includes parts of the Cheetham Wetlands, coastal areas and marine waters to the 2 metre depth contour.

Section 1 is bounded by a line commencing on the 2 metre depth contour as defined in the Port Phillip Depth Contour at 1:25,000 (26 August 2010) at a point nearest to coordinate 37°55' 47" S 144°47' 22" E, (labelled as point A on the map) and which lies within the Point Cooke Marine Sanctuary.

The boundary heads in a northerly direction until the boundary of block S13\PS611333 at a point nearest to coordinate 37°54' 50" S 144°47' 23" E, (labelled as point B on the map).

The boundary follows the perimeter of this block in a generally northerly direction; past the point nearest to coordinate 37°54' 44" S 144°47' 27" E, (point C) until the point nearest to coordinate 37°54' 43" S 144°47' 24" E, (point D).

The boundary continues in a northerly direction, crossing Skeleton Creek, until a point 250 m north of the north bank of Skeleton Creek at coordinate 37°53' 46" S 144°47' 25" E, (labelled as point E on the accompanying map).

The boundary follows an easterly line parallel to and 250 m from the northern bank of Skeleton Creek forming a buffer zone on the north side of the creek.

At a point 250 m north of Skeleton Creek at coordinate 37°53' 45" S 144°48' 8" E, (point F), the boundary heads easterly across the shoreline to the 2 metre depth contour, meeting it at the point closest to 37°53' 45" S 144°48' 28" E, (point G).

From this point the boundary follows the 2 metre depth contour line in a generally southerly direction along the 2 metre depth contour around Point Cooke returning to the starting point (point A).

Section 2: Block from Werribee River to Avalon Airfield.

Section 2 is the largest section located south-west of section 1 in an area bounded in the north-east by the Werribee River and to the south-west by the Avalon Airfield. This section covers approximately 14,595 hectares and includes the Western Treatment Plant (WTP), Avalon Airfield, coastal areas including The Spit Wildlife Reserve (WR) (also known as The Spit Nature Conservation Reserve) and adjacent marine waters to the 2 metre depth contour.

Section 2 is bounded by a line commencing at the point nearest to coordinate 38°4' 16" S 144°30' 53" E, in the south-west corner of The Spit WR as defined in Parks and Conservation Reserves (marked as point H on the map).

The boundary follows the western boundary of The Spit WR until it meets the northwest corner of Crown parcel 12C/PP3241 (as defined in Vicmap Property). This Crown parcel is located within the WR. The boundary then follows the northern boundary of this Crown parcel until it meets the boundary of the freehold parcel 1/TP861312, which is next to

the WR. The boundary then follows the west boundary of parcel 1/TP861312 in a northerly direction until it intersects with the south-east corner of parcel 2/TP861312.

The boundary then follows the southern boundary of parcels 2/TP861312 and 34/LP7173 in a westerly direction until it intersects with the north east corner of parcel 7/TP842691 which is included within the Avalon Airfield. The boundary then continues along the parcel boundaries around the airfield.

On the north-western boundary of the airfield the boundary follows an unnamed road (located within parcels 3\TP842691 and 5\TP842691) in a generally northerly direction until it reaches the Princes Freeway. The boundary then continues along the parcel boundaries of the airfield and parcels 9A\PP3241 and 1\TP218395 (within the WTP²) in an easterly direction until it intersects with the north east corner of parcel 1/TP218395. The boundary then continues in a northerly direction along the western boundary the WTP parcels: 2\TP854433 and 3\TP854433, until it meets the Princes Freeway. It then continues in a generally north-easterly direction continuing to align with the northern boundaries of the WTP parcels: 1\TP748314 and 1\TP843152.

At Point Wilson Road the boundary continues in a northerly direction crossing over the Princes Freeway to follow the western boundary of parcel 2/TP877652 until it intersects with the north-west corner of that parcel. The boundary then continues in an easterly direction following the freehold land along the south bank of Little River.

The boundary then crosses the river to proceed in a northerly direction to align with the western boundaries of parcels 1/TP595582 and 1/TP759068 until it intersects with the north-west corner of parcel 1/TP759068 when it then continues in an easterly direction along the northern boundary of that parcel.

At north east corner of parcel 1/TP59068 the boundary continues in a generally northerly direction to follow the western boundaries of parcels 2~15/PP2401 and 1/TP752523. At the southern north-west corner of parcel 1/TP752523 the boundary continues in a north easterly direction to meet the south-west corner of parcel 3/TP52523. The boundary continues in a generally north easterly direction following the freehold parcel boundaries. It then proceeds in a generally southerly direction at the north east corner of parcel 4\TP912462 to align with that parcel's eastern boundary, the southern boundary of parcel 4\LP 9503 and the eastern boundaries of parcel's 2 to 3 \TP752523 and 3~15/PP2401. At the north-west corner of parcel 1~12\PP2401 that boundary continues in an easterly direction to cross the Princes Freeway and intersect with the north-west corner of parcel 1\TP740575.

The boundary continues in a north easterly direction to align with the freehold land to the south of Princes Freeway until it meets the south west corner of parcel A\PS415683. It then crosses the Princes Freeway in a north easterly direction to intersect with the most westerly corner of parcel 1\PS401725. The boundary continues to follow the freehold parcel boundaries on the eastern side of the Princes Highway (Geelong Road) in a north easterly direction until it crosses Farm Road. Continuing in the same direction the boundary then follows the eastern boundary of parcel RES1\PS425194 until it meets with the south west boundary of Crown parcel 24C\PP5847 (P141168), which forms a part of the Werribee River frontage.

The boundary then continues in a generally southerly direction following the west side of the Werribee River excluding the bed and banks of the Werribee River until it again intersects the Princes Freeway. At the point closest to coordinate 37° 55' 12.89"S 144° 39' 27.59"E", the line crosses the river and continues on the eastern side aligning with the Crown parcel.

The boundary continues to the mouth of the Werribee River to a point on the southern boundary of Crown parcel P243119 (95A~D\PP2518) closest to coordinate 37°58' 1 9" S 144°41' 8" E, (point I on the map). The boundary then continues in a straight line to the 2 metre depth contour at the point closest to coordinate 37°58' 3 9" S 144°41' 42" E, (point J on the map). At this point the line follows the contour south to the point closest to coordinate 38°4' 16" S 144° 31' 9" E (point K on the map). From this point the line follows a straight path west to the starting point ('H').

² The area now called the Western Treatment Plant (WTP) was at the time of listing in 1982 described as the Melbourne and Metropolitan Board of Works Werribee Sewage Farm (also described more simply as the Melbourne and Metropolitan Board of Works Farm).

Section 3: Northern coastline of Corio Bay from Point Wilson to Limeburners Bay.

Section 3 is located west of section 2 on the northern side of Corio Bay covering approximately 942 hectares. This section includes the wetlands adjacent to the coast west of Point Wilson, including Snake Island and the adjoining salt marsh, but excludes The Avalon Saltworks.

Section 3 is bounded by a line commencing at the southern point of parcel 3\TP583690 (Lot 3, TP583690, Parish of Murtcairn as defined in Vicmap Property, point L on the map). The boundary continues south to intersect with the 2 metre depth contour at the point closest to coordinate 38°5' 38" S 144°30' 24" E, (point M on the map).

The boundary continues to follow the 2 metre depth in a westerly direction until it intersects with the point closest to coordinate 38°4' 34" S 144°23' 52" E, (point N on the map). The boundary extends in a straight line on a bearing of 150 degrees MGA55 to meet the south west corner of Crown allotment 32A, Parish of Moranghurk (point Q on the map).

The boundary continues around Limeburners Bay firstly in a generally northerly direction, then east and then in a generally southerly direction to follow the inland extent of the Crown land parcels, and includes the following coastal reserves; Port Phillip Bay Coastal Reserve, Limeburners Lagoon (Hovell Creek) Flora and Fauna Reserve and part of the Avalon Coastal Reserve, as defined in Parks and Conservation Reserves.

The boundary then follows the northern boundary of the Crown parcel (P142814 or D~2\PP3891) until it intersects with the centre line of Foreshore Road where it continues in a southerly and then easterly direction to follow the centreline of Foreshore Road and of an unnamed track to a point nearest to coordinate 38°5' 10" S 144°26' 40" E, (point R on the map).

From this point the boundary continues on a line adjacent to the coast through the Avalon Coastal Reserve joining the points closest to the coordinates: coordinate 38°5' 7" S 144°26' 51" E, (point S on the map), 38°5' 3" S 144°26' 56" E, (point T on the map); 38°4' 54" S 144°27' 6" E, (point U on the map); and 38°4' 41" S 144°27' 15" E, (point V on the map).

The boundary then follows the centreline of an unnamed road as defined in Vicmap Transport in a generally north easterly direction until it meets the west boundary of Crown parcel P368023. It then turns south to intersect with the north west corner of the Crown parcel (P143136 or 1C\PP3241), it then follows the inland boundary of this Crown land parcel and then the inland boundary of the parcel 1\TP583690 in an easterly direction back to the starting point at Point Wilson (point L on the map).

Section 4: Swan Bay.

Section 4 is located to the south-east of section 3 on the western side of the entrance to Port Phillip Bay and encompasses Swan Bay, covering approximately 2660 hectares. The adjacent Swan Bay – Edwards Point Wildlife Reserve (WR) (also known as the Edwards Point Nature Conservation Reserve) and Duck Island are excluded from this section.

Section 4 is bounded by a line commencing at the south eastern tip of the Swan Bay – Edwards Point WR as defined in Parks and Conservation Reserves at the point closest to coordinate 38°13' 11" S 144°42' 1" E, (point W on the map)

The boundary continues south across Swan Bay to a point at coordinate 38°14' 39" S 144°42' 5" E, (point X on the map).

The boundary then follows the mean High Water Mark around Swan Island in a generally westerly direction before aligning with the inland boundary of Crown parcel P143816 (1G~2B\PP3380) as defined in Vicmap Property. It follows this line until it intersects with the seaward boundary of the freehold parcel 1\TP864067. The boundary continues along this line around Swan Island until the point closest to coordinate 38°15' 10" S 144°39' 46" E, adjacent to the Queenscliff Golf Course (point Y on the map).

The boundary then follows the Port Phillip Heads Marine National Park boundary as defined in Parks and Reserves to a point adjacent to the Queenscliff railway station at coordinate 38°15' 49" S 144°39' 39" E, (point Z on the map).

The boundary then follows the inland edge of the marine Crown parcel along the southern end of Swan Bay to the west side of the bay.

The boundary continues in a northerly direction until reaching the Swan Bay - Edwards Point WR. The boundary continues in an easterly direction and follows the inland edge of the marine Crown parcels, and then follows the offshore extent of Swan Bay – Edwards Point WR returning to the starting point (point W on the map).

Section 5: Mud Islands.

Section 5 is located 10km inside Port Phillip Heads to the east of section 4 and covers approximately 625 hectares.

Section 5 is comprised of the two Crown land parcels P373932 (2004\PP3380) and P144646 (71C\PP3380) as defined in Vicmap Property which encompasses the island and also represent the Mud Islands component of the Port Phillip Heads Marine National Park.

Section 6: Barwon Heads along Barwon River to inlet of Reedy Lake, including Lake Connewarre.

Section 6 is located outside of Port Phillip Bay west of section 5 and south-west of the Port Phillip Bay entrance. It covers an area of approximately 3,403 hectares.

Section 6 is comprised of the parts of the Lake Connewarre Wildlife Reserve, which includes Lake Connewarre, Salt Swamp, Murtnaghurt Swamp, Hospital Swamp and parts of Reedy Lake and the Barwon River estuary as far south as the Barwon River Bridge. This includes the following Crown parcels:

- the part Crown parcel 2023\PP2421 (includes Salt Swamp, Hospital Swamp, Reedy Lake and part of Lake Connewarre Wildlife Reserve);
- Crown parcel 2022\PP2421 (north east of intersection of Ozone Road and Flinders Parade);
- Crown parcel 2004\PP2421 (south of Barwon Heads Road);
- Crown parcels P141579(S~23\PP2421) and P141578 (T~23\PP2421) (Murtnaghurt Swamp);
- Crown parcel P142357 (2B~10\PP3153) west of Reedy Lake;
- Crown parcel P142365 (4~C\PP3153) east of Pacey Island;
- Crown parcel P144182 (21D2~4\PP2106), near Gutheridge Street Boat Ramp; and
- the part of Crown parcel P141257 (28~4\PP2106), north of Barwon River Bridge.

The following parcels are excluded from the Ramsar Site. These parcels are listed in clockwise order:

- Crown parcels P144491 and P144534, north west of the Barwon River Bridge;
- Crown parcel C1~15\PP (north of Sheepwash Road and include part of River Parade);
- Crown parcel P367225 (H1~14\PP2421), south of the Wildlife Reserve and north of the private land PC 361894;
- Crown land parcels that form part of the Lake Connewarre Wildlife Reserve, these are:
 - Crown parcel P143674 (G~21\PP2421), located south of Salt Swamp and Barwon Heads Road and west of Bluestone School Road,
 - Crown parcels P143772(D1~13\PP2421) and P143773(D2~13\PP2421), located between Tait Point and Hospital Swamp,
 - Crown parcel P144510 (J1~7\PP2421) located south west of Hospital Swamp and north of private land parcel 1|TP84486,
 - Crown parcels P144469 (2B~4A\PP2421) and P143821 (2A~4A\PP2421) located west of Hospital Swamp,

- Portion of Crown parcel 2023\PP2421 located south of a straight line between the north west corner of private land parcel 1\TP 673943 and north east corner of Crown land parcel P143750 (2J~10\PP3153),
- Crown parcels P143750 (2J~10\PP3153), P142359 (2G~10\PP3153), P143749 (2E~10\PP3153), P143748 (2D~10\PP3153), P142358 (2K~10\PP3153), P143747 (2F~10\PP3153), P142356 (2~10\PP3153), and P143751 (1A~10\PP3153) located west of Reedy Lake,
- P144480 (4A~11\PP3153) west of Moolap Station Road, and
- the portion of Crown parcel 2023\PP2421 south of Fitzgerald Road and west of private land 1\TP 22500;
- private land known as Pacey Island and identified as parcel 1~C\PP3153; and
- the part of Crown parcel P141257 (28~4\PP2106) occupied by the caravan park.

References

DEWHA (2011). Additional guidelines for written boundary descriptions for Australian Ramsar wetlands, September 2011, Department of the Environment, Water, Heritage and the Arts. Canberra.

DEWHA (2010). Guidelines for Written Boundary Descriptions for Australian Ramsar Wetlands, Version 1, 27 August 2010. Department of the Environment, Water, Heritage and the Arts. Canberra.

DEWHA (2008). Mapping Specifications for Australian Ramsar Wetlands. Module 1 of the National Guidelines for Ramsar Wetlands – Implementing the Ramsar Convention in Australia. Department of the Environment, Water, Heritage and the Arts. Canberra.

DCNR (1995). *Victorian Ramsar Sites: Definition and Boundary Clarification Project Report*. National Parks Service, Department of Conservation and Natural Resources. Victoria.

DSE (2003). *Port Phillip Bay (Western Shoreline) and Bellarine Peninsula Ramsar Site: Strategic Management Plan*. Department of Sustainability and Environment. Victoria.

Appendix 1

List of coordinates used to define parts of the Ramsar100 GIS layer, Port Phillip (Western Shoreline) & Bellarine Peninsula Ramsar Site.

Site	Point	Detail	Latitude (GDA94)	Longitude (GDA94)
Point Cooke - Port Phillip Bay & Bellarine Peninsula	A	Where bearing 180 degrees MGA55 from point A intersects the 2 metre depth contour	37°55' 47" S	144°47' 22" E
Point Cooke - Port Phillip Bay & Bellarine Peninsula	B	Where bearing 0 degrees MGA55 from point A intersects freehold land boundary	37°54' 50" S	144°47' 23" E
Point Cooke - Port Phillip Bay & Bellarine Peninsula	C	Eastern extent of freehold land to be excluded from western boundary at Point Cook	37°54' 44" S	144°47' 27" E
Point Cooke - Port Phillip Bay & Bellarine Peninsula	D	North western extent of freehold land to be excluded from western boundary at Point Cook	37°54' 43" S	144°47' 24" E
Point Cooke - Port Phillip Bay & Bellarine Peninsula	E	Where bearing 0 degrees MGA55 through points A, B, D intersects a 250 metre buffer of Skeleton Creek	37°53' 46" S	144°47' 25" E
Point Cooke - Port Phillip Bay & Bellarine Peninsula	F	Where 250 metre buffer of Skeleton Creek intersects approximate high water mark	37°53' 45" S	144°48' 8" E
Point Cook e- Port Phillip Bay & Bellarine Peninsula	G	Where bearing 90 degrees MGA55 from point F intersects the 2 metre depth contour	37°53' 45" S	144°48' 28" E
Werribee - Port Phillip Bay & Bellarine Peninsula	H	Southern extent of The Spit Wildlife Reserve	38°4' 16" S	144°30' 53" E
Werribee - Port Phillip Bay & Bellarine Peninsula	I	Where bearing 125 degrees MGA55 from the Werribee R. Rear Lead intersects offshore edge of Crown land	37°58' 19" S	144°41' 8" E
Werribee - Port Phillip Bay & Bellarine Peninsula	J	Where bearing 125 degrees MGA55 from point F intersects the 2 metre depth contour	37°58' 39" S	144°41' 42" E
Werribee - Port Phillip Bay & Bellarine Peninsula	K	Where bearing 90 degrees MGA55 from L intersects 2 metre depth contour	38°4' 16" S	144°31' 9" E
Point Wilson - Port Phillip Bay & Bellarine Peninsula	L	Southern point of Lot 3, TP583690, Parish of Murtcaim	38°5' 22" S	144°30' 24" E
Point Wilson - Port Phillip Bay & Bellarine Peninsula	M	Where bearing 180 degrees MGA55 from Point Wilson Beacon intersects 2 metre depth contour	38°5' 38" S	144°30' 24" E
Limeburners Lagoon - Port Phillip Bay & Bellarine Peninsula	N	Where bearing 150 degrees MGA55 from point Q intersects the 2 metre depth contour	38°4' 34" S	144°23' 52" E
Limeburners Lagoon - Port	Q	South-western corner of CA 32A, Parish of Moranghurk	38°4' 27" S	144°23' 47" E

Site	Point	Detail	Latitude (GDA94)	Longitude (GDA94)
Phillip Bay & Bellarine Peninsula				
Avalon - Port Phillip Bay & Bellarine Peninsula	R	On track junction, Avalon	38°5' 10" S	144°26' 40" E
Avalon - Port Phillip Bay & Bellarine Peninsula	S	Straight line from point R	38°5' 7" S	144°26' 51" E
Avalon - Port Phillip Bay & Bellarine Peninsula	T	Straight line from point S	38°5' 3" S	144°26' 56" E
Avalon - Port Phillip Bay & Bellarine Peninsula	U	Straight line from point T	38°4' 54" S	144°27' 6" E
Avalon - Port Phillip Bay & Bellarine Peninsula	V	On a track junction, Point Lillias	38°4' 41" S	144°27' 15" E
Swan Bay - Port Phillip Bay & Bellarine Peninsula	W	South eastern point of Swan Bay/Edwards Point Wildlife Reserve	38°13' 11" S	144°42' 1" E
Swan Bay - Port Phillip Bay & Bellarine Peninsula	X	Eastern most point, Swan Island	38°14' 39" S	144°42' 5" E
Swan Bay - Port Phillip Bay & Bellarine Peninsula	Y	Where western most point of Swan Island intersects with the marine national park boundary	38°15' 10" S	144°39' 46" E
Swan Bay - Port Phillip Bay & Bellarine Peninsula	Z	Where an extension of the marine national park boundary intersects with the north boundary of Crown parcel 1A~28\PP5661 (P141060)	38°15' 49" S	144°39' 39" E

Appendix 2

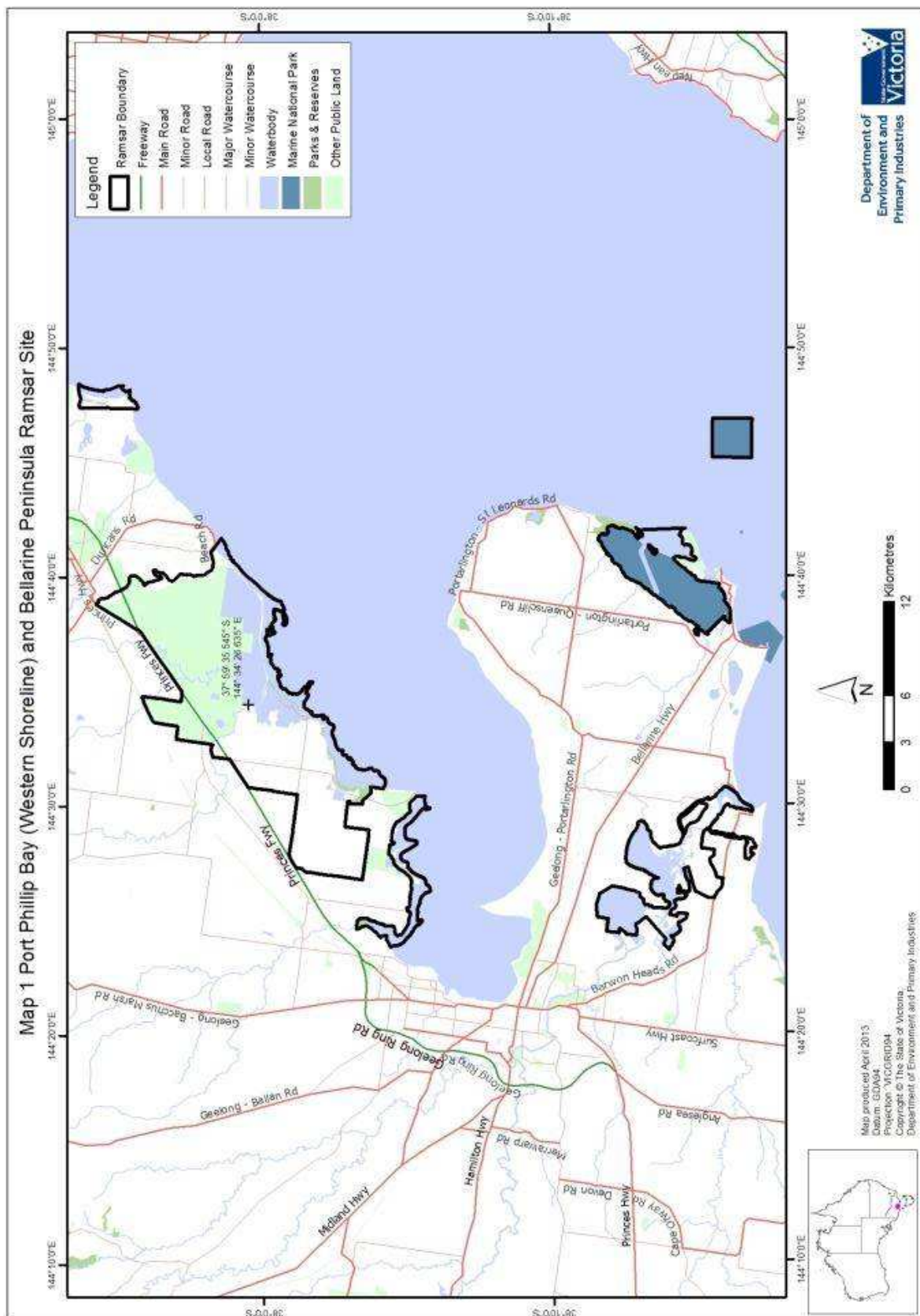
Site hectares and projection.

Section	Albers equal area
Section 1: Skeleton Creek to Point Cooke	420.86
Section 2: Werribee River to Avalon Airfield	14,595.86
Section 3: Corio Bay to Limeburners Bay	941.94
Section 4: Swan Bay	2,659.58
Section 5: Mud Islands	624.91
Section 6: Barwon Heads to Lake Connewarre	3,402.65
Total	22645.79

Appendix 3

Maps.

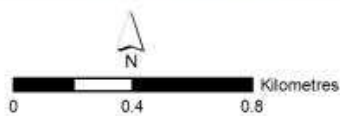
Map No.	Description
1.	Overview Map
2.	Section 1: Skeleton Creek to Point Cooke
3.	Section 2: Avalon Airfield and the Western Treatment Plant
4.	Section 2: Werribee River and the Western Treatment Plant
5.	Section 3: Corio Bay to Limeburners Bay
6.	Section 4: Swan Bay
7.	Section 5: Mud Islands
8.	Section 6: Barwon Heads to Lake Connewarre



Map 2 Port Phillip Bay (Western Shoreline) and Bellarine Peninsula Ramsar Site



Map produced April 2013
 Datum: GDA94
 Projection: MGA Zone 55
 Copyright © The State of Victoria,
 Department of Environment and Primary Industries

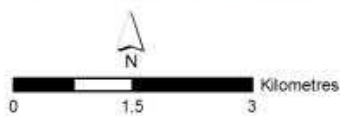


Department of
 Environment and
 Primary Industries **Victoria**

Map 3 Port Phillip Bay (Western Shoreline) and Bellarine Peninsula Ramsar Site



Map produced April 2013
 Datum: GDA94
 Projection: MGA Zone 55
 Copyright © The State of Victoria,
 Department of Environment and Primary Industries



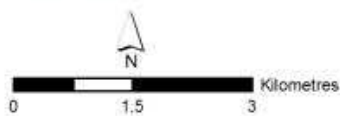
Department of
 Environment and
 Primary Industries

State Government
Victoria

Map 4 Port Phillip Bay (Western Shoreline) and Bellarine Peninsula Ramsar Site

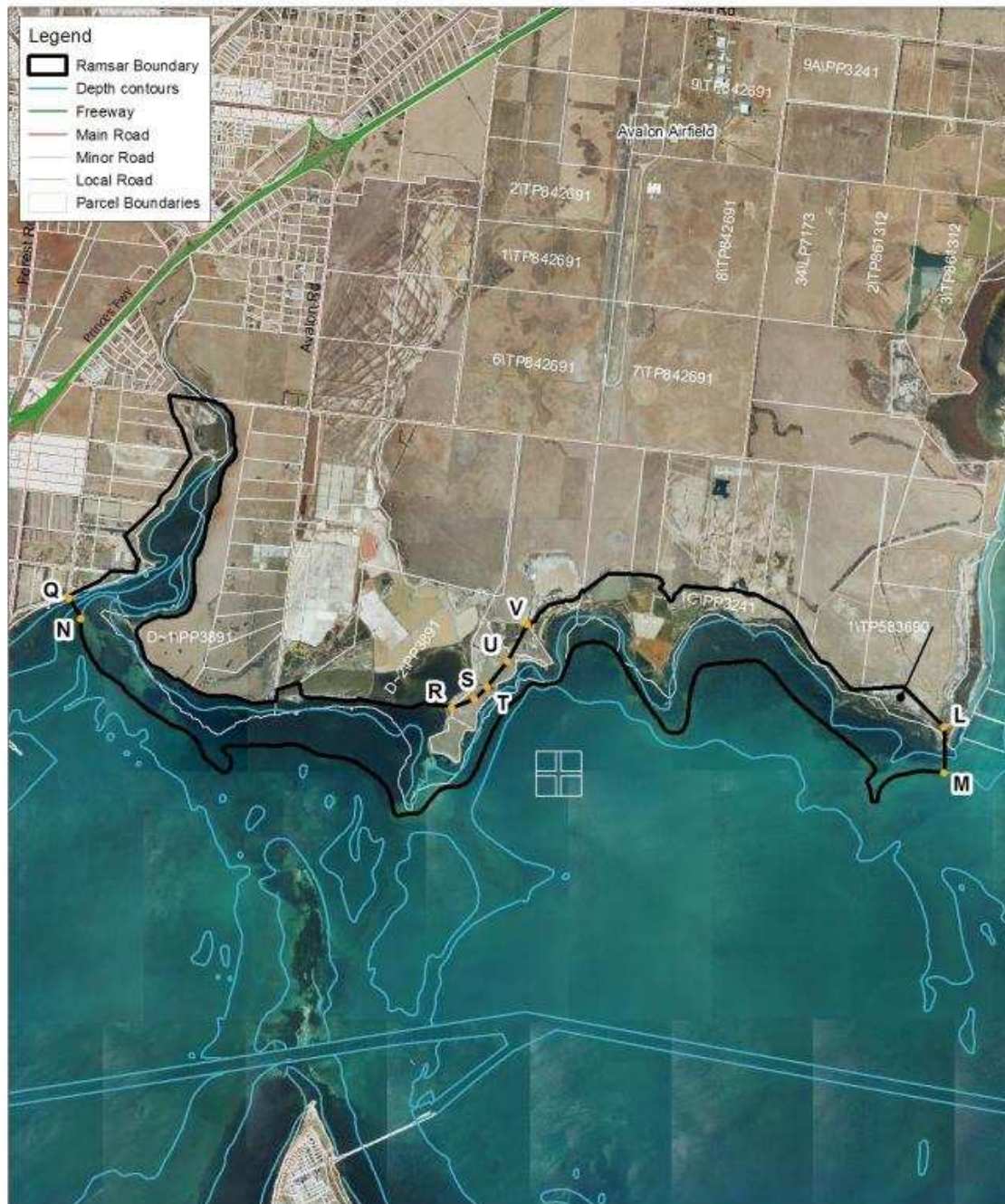


Map produced April 2013
 Datum: GDA94
 Projection: MGA Zone 55
 Copyright © The State of Victoria,
 Department of Environment and Primary Industries



Department of
 Environment and
 Primary Industries **Victoria**

Map 5 Port Phillip Bay (Western Shoreline) and Bellarine Peninsula Ramsar Site



Map produced April 2013
 Datum: GDA94
 Projection: MGA Zone 55
 Copyright © The State of Victoria
 Department of Environment and Primary Industries



Department of
 Environment and
 Primary Industries



Map 6 Port Phillip Bay (Western Shoreline) and Bellarine Peninsula Ramsar Site



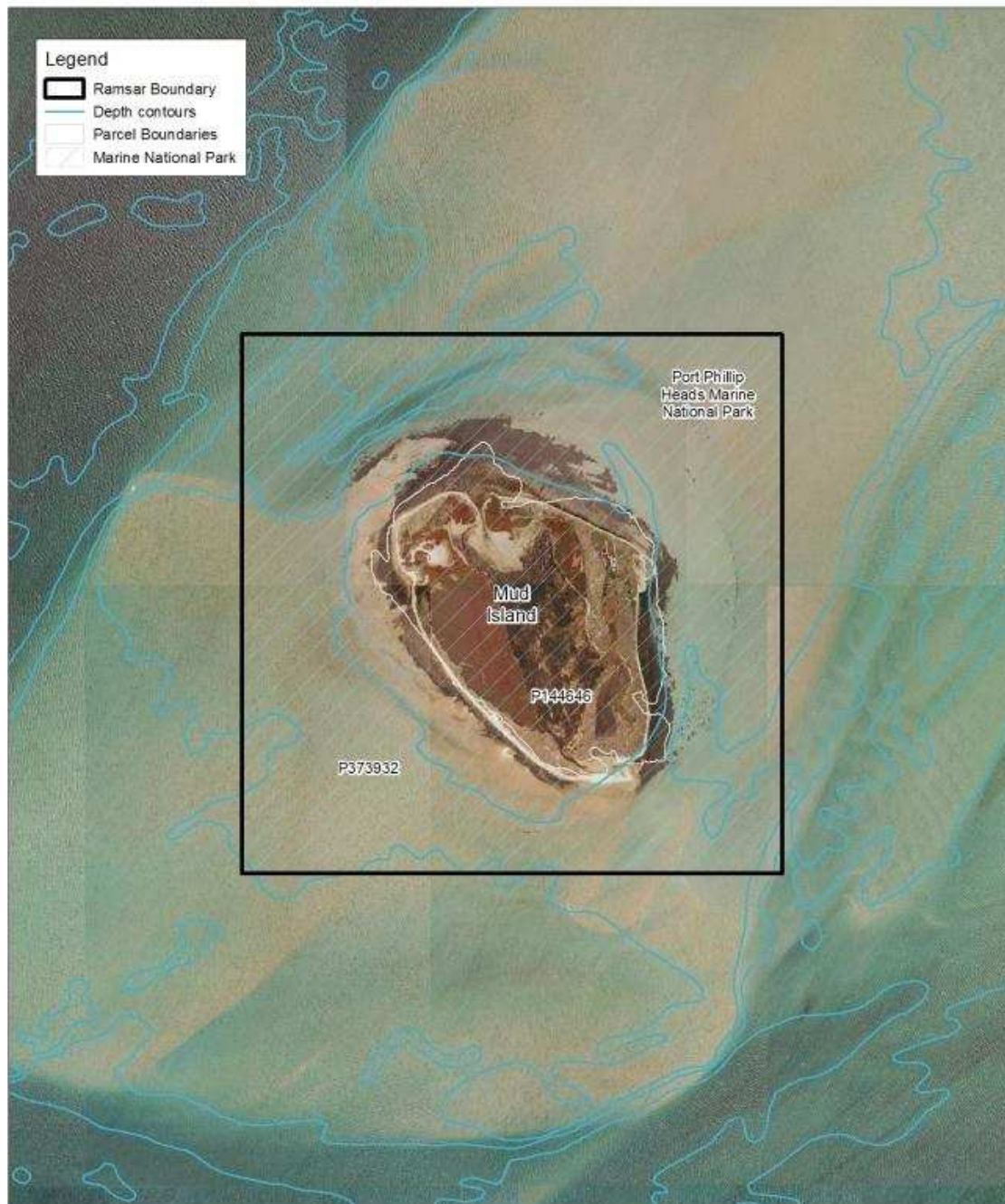
Map produced April 2013
 Datum: GDA94
 Projection: MGA Zone 55
 Copyright © The State of Victoria
 Department of Environment and Primary Industries



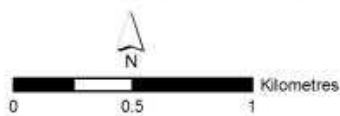
Department of
 Environment and
 Primary Industries

State Government
Victoria

Map 7 Port Phillip Bay (Western Shoreline) and Bellarine Peninsula Ramsar Site



Map produced April 2013
 Datum: GDA94
 Projection: MGA Zone 55
 Copyright © The State of Victoria,
 Department of Environment and Primary Industries

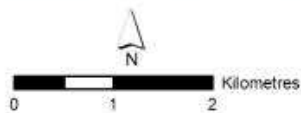


Department of
 Environment and
 Primary Industries 

Map 8 Port Phillip Bay (Western Shoreline) and Bellarine Peninsula Ramsar Site



Map produced April 2013
 Datum: GDA94
 Projection: MGA Zone 55
 Copyright © The State of Victoria
 Department of Environment and Primary Industries



Department of
 Environment and
 Primary Industries
 Victoria

Customer Service Centre **136 186**

www.depi.vic.gov.au