

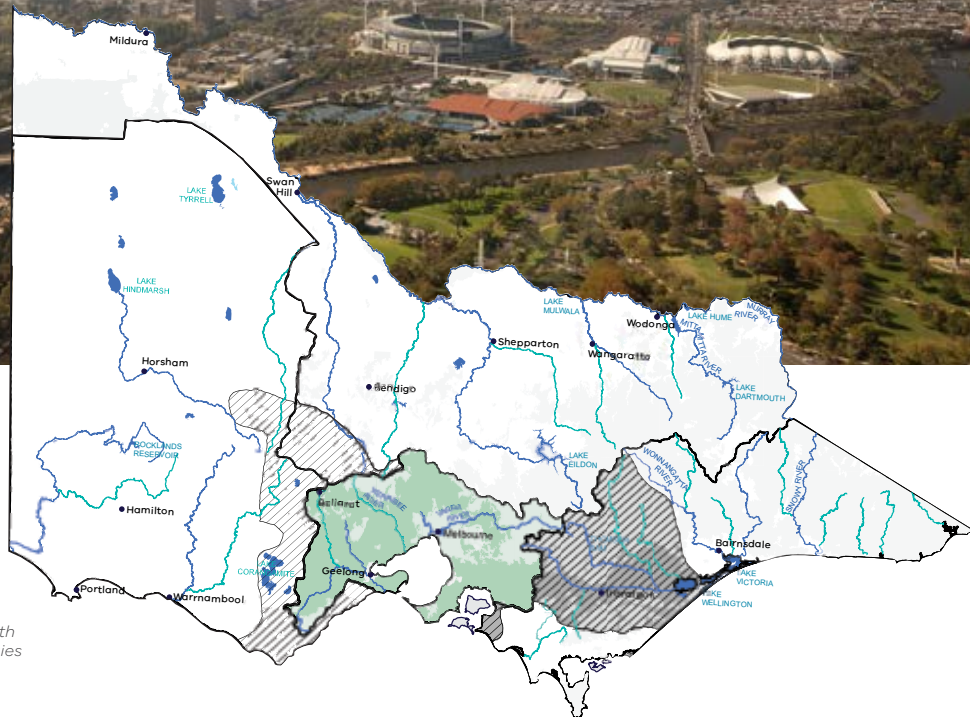
Central Region Sustainable Water Strategy

Information sheet for stakeholders on the review process



- Central Region
- Overlap Central, Western, Gippsland and Northern Regions

This map shows where the boundaries of the original Central Region Sustainable Water Strategy overlap with areas of the Western, Northern and Gippsland strategies



Reviewing Victoria's sustainable water strategies

Sustainable Water Strategies are long term plans for Victoria's water resources so there are secure supplies for cities and towns, industry and the environment well into the future.

This information sheet provides background for the review of the Central Region Sustainable Water Strategy. Outcomes of the review will inform any future development of a new sustainable water strategy.

Sustainable Water Strategies

Sustainable water strategies are long term plans for water resources within Victoria. Sustainable water strategies were completed for the Central, Northern, Western and Gippsland regions between 2006 and 2011.

These landmark strategies identified risks to water supply and quality. They included actions to help water users, water

corporations and catchment management authorities manage and respond to risks over the next 50 years.

The *Water Act 1989* requires each Sustainable Water Strategy to be reviewed at least every 10 years.

The Victorian Government's *Water for Victoria* plan (2016) introduced five-yearly assessments of

sustainable water strategies to help deal with climate change, drought and population growth and consider changes in land use.

The government started the review of the Central Region Sustainable Water Strategy in 2016 and five-yearly assessments of the Gippsland Region and Western Region Sustainable Water Strategies in 2017.

Snapshot of the region

The Central Region is an area south of the Great Dividing Range that includes the West Gippsland, Central Highlands, Barwon, Port Phillip and Westernport regions and the urban centres of Geelong, Ballarat, Greater Melbourne, Melton, Sunbury, Warragul and Traralgon.

The main pressures on the region's water resources are

- population growth
- drought and climate change
- changes in land use.

Eighty per cent of Victoria's population lives in the Central Region. Melbourne is Australia's fastest growing city and the major centres of Ballarat and Geelong are expected to almost double by 2051.

Melbourne's population has risen by 20 per cent since 2007, increasing water use and daily consumption and putting more pressure on dams that have had below long-term average inflows in 18 out of the past 20 years.

Environmental scientists predict there will be even less rainfall, less run-off into our rivers and storages and more severe and prolonged droughts into the future.

Land use changes include new urban development and more houses in established areas, expanding rural residential development, cropping and dairy farming in different areas.

Victoria's water grid offers better water security by enabling the water market to move water through the grid to manage risk and for more secure supplies.

The desalination plant strengthens Melbourne's water security as a buffer against drought. It can supply about a third of Melbourne's water use.

The water grid and trade between water corporations mean this increased water security can be shared across the connected system.

The water grid enables the Melbourne system to supply greater water security to towns like Geelong, Sunbury, Melton, Cowes, Wonthaggi, Inverloch, Drouin, Warragul and Cape Patterson, with Korumburra, Poowong, Loch and Nyora soon to be connected.

Continued investment in recycled water through dual pipe systems for garden watering and toilet flushing and storm water harvesting maintains sports fields and green spaces and supplies irrigation, instead of using drinking water.

Communities enjoy the recreational benefits provided by waterways like the Yarra River and some water storages. Integrated water management and urban greening offer significant environmental, social and economic benefits for Melbourne and regional urban centres.

2004-2006

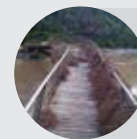


Prolonged drought (1997-2009) flows up to 90% lower than long-term average

- *Our Water Our Future* launched
- Discussion paper
- *Water Act 1989* Amendments
- Draft Central Region Sustainable Water Strategy
- Public consultation
- Final Central Region Sustainable Water Strategy



2007-2011



Severe flooding (2010-2011)

- *Our Water Our Future: The next stage of the Government's Water Plan*
- *Melbourne 2030: A planning update Melbourne@5 million*



Review of the Central Region Sustainable Water Strategy

The review of the Central Region Sustainable Water Strategy started in late 2016 and will continue through 2018. A stocktake of the strategy’s actions in 2016 was updated in 2017.

The review will:

- report on the timing of the strategy’s actions
- check how well the aims and targets have been met
- outline how water management has changed since the strategy’s release
- identify lessons learned to inform a new sustainable water strategy.

The review will also consider progress on shared benefits since the release of the Central Region Sustainable Water Strategy, including recreational values and Aboriginal values.

The review will be guided by a consultative committee representing the water sector and Traditional Owners. A draft review report for the Central Region Sustainable Water Strategy review will be released for public consultation in 2018.



Image: © State of Victoria, DELWP.

2012-2016

- Victorian Waterway Management Strategy
- *Water for Victoria* launched
- Stocktake of Sustainable Water Strategies actions
- Progress update of actions for Central Region Sustainable Water Strategy

2017-2019

- Review of the Central Region Sustainable Water Strategy:
 - Consultative Committee
 - Draft Review
 - Public Consultation
 - Final Review

How can I get involved?

Participate in the public consultation for the Review of Central Region Sustainable Water Strategy.



1. Indicative dates.

2. The five-yearly assessments of the Gippsland and Western Region Sustainable Water Strategy started in 2017.

3. The review of the Northern Region Sustainable Water Strategy is due to start in 2019.



Highlights of the Central Region Sustainable Water Strategy

The original strategy aimed to protect and improve river health, promote sustainable water use, upgrade water systems and increase safe and reliable water supplies as the region experiences climate change and rapid population growth. That included:

- ✓ Modelling climate change scenarios as the basis for the region to look at low, medium and high climate change risks in detail over a 50-year period.
- ✓ Providing for the environment's share of water, embedded environmental water into planning and increased the volume where there was not enough water for the environment.
- ✓ Integrating climate change into water planning with mandatory preparation of drought response plans by water corporations and catchment management authorities
- ✓ Focusing on managing demand in behaviour change and infrastructure to conserve and use existing water supplies more efficiently.
- ✓ Providing a regional platform for water corporations and catchment management authorities to be involved in water planning and to consider water supply security at a scale beyond each water corporation
- ✓ Including Aboriginal heritage values by formalising engagement in regional waterway strategies and other waterway planning.

Working together

The sustainable water strategy review will involve people from across state and local government, the water sector and communities.

The Victorian Government, through the Aboriginal Water Program, is including Traditional Owners and Aboriginal people in water management. DELWP's Aboriginal Water Unit is working with communities on ways to share the benefits of Victoria's water with Traditional Owners and their communities.

The review currently underway will explore links with key DELWP projects such as the long-term water resource assessment, water grid and markets and integrated water management forums.

Stocktake of actions

The original Central Region Sustainable Water Strategy included 112 actions, 103 of which have been completed. Of the remaining actions, 2 are ongoing and 7 form part of *Water for Victoria*. Update on the status of the actions in 2017 will be incorporated in the review.

Want to know more?

- [Stocktake of the Central Region Sustainable Water Strategy](#)
- [Victorian Waterway Management Strategy](#)
- [Central Region Sustainable Water Strategy](#)
- [Gippsland Region Sustainable Water Strategy](#)
- [Western Region Sustainable Water Strategy](#)
- [Northern Region Sustainable Water Strategy](#)
- [Water for Victoria](#) Chapters 6 - 9

For more information

- Email SWS.Team@delwp.vic.gov.au or contact the DELWP Customer Service on 136 186
- [Long-term water resource assessment](#)
- [Realising the potential of the grid and markets](#)
- [Integrated Water Management Forums](#)

Front cover image: © State of Victoria, DELWP.

© The State of Victoria Department of Environment, Land, Water and Planning 2018



This work is licensed under a Creative Commons Attribution 4.0 International licence. You are free to re-use the work under that licence, on the condition that you credit the State of Victoria as author. The licence does not apply to any images, photographs or branding, including the Victorian Coat of Arms, the Victorian Government logo and the Department of Environment, Land, Water and Planning (DELWP) logo.

delwp.vic.gov.au

To view a copy of this licence, visit creativecommons.org/licenses/by/4.0/
ISBN 978-1-76047-958-9 (print)
ISBN 978-1-76047-959-6 (pdf/online)

Disclaimer

This publication may be of assistance to you but the State of Victoria and its employees do not guarantee that the publication is without flaw of any kind or is wholly appropriate for your particular purposes and therefore disclaims all liability for any error, loss or other consequence which may arise from you relying on any information in this publication.