

Gunbower Forest Ramsar Site Boundary Description

Technical Report



Published by the Victorian Government Department of Environment and Primary Industries Melbourne, 2013

© The State of Victoria Department of Environment and Primary Industries Melbourne 2013

This publication is copyright. No part may be reproduced by any process except in accordance with the provisions of the *Copyright Act 1968*.

Authorised by the Victorian Government, 8 Nicholson Street, East Melbourne.

ISBN 978-1-74287-743-3 (online)

For more information contact the DEPI Customer Service Centre 136 186

Citation: DEPI (2013) Gunbower Forest Ramsar Site Boundary Description Technical Report. Department of Environment and Primary Industries, East Melbourne, Victoria.

Disclaimer

This publication may be of assistance to you but the State of Victoria and its employees do not guarantee that the publication is without flaw of any kind or is wholly appropriate for your particular purposes and therefore disclaims all liability for any error, loss or other consequence which may arise from you relying on any information in this publication.

Accessibility

If you would like to receive this publication in an accessible format, such as large print or audio, please telephone 136 186, or email customer.service@depi.vic.gov.au

Deaf, hearing impaired or speech impaired? Call us via the National Relay Service on 133 677 or visit www.relayservice.com.au

This document is also available in PDF format on the internet at www.depi.vic.gov.au

Cover photo: Gunbower Forest 2009 (DEPI)

Contents

Introduction	1
.....	
Methodology of RAMSAR 100 GIS layer boundary realignment	2
.....	
Location	3
.....	
Written description of the Gunbower Forest Ramsar Site boundary	4
.....	
References	6
.....	
Appendix 1	7
.....	
Appendix 2	8
.....	

Introduction

Ramsar wetlands are wetlands of international importance listed under the Convention on Wetlands (Ramsar, Iran 1971). Victoria has 11 wetlands listed under this convention including the Gunbower Forest Ramsar Site.

It is a requirement of the Convention on Wetlands that a suitable map or maps are provided for each Ramsar wetland. The Department of Sustainability, Environment, Water, Population and Communities (SEWPAC), requires that both the written description and the spatial data of the Ramsar site boundaries are accurate. This information is used to gazette the boundary of the declared Ramsar wetland in accordance with Section 327 of the *Environment Protection and Biodiversity Conservation Act 1999* (EPBC Act). Under the EPBC Act there are requirements for approval of activities which have, or are likely to have a significant impact on the ecological character of a declared Ramsar wetland. Precise identification of site boundaries helps to ensure that the exact boundaries of the Ramsar site can be easily identified, which can facilitate compliance with the EPBC Act as well as its effective enforcement.

The RAMSAR100 spatial dataset is a polygon layer that identifies each Victorian Ramsar area individually. RAMSAR100 was produced in conjunction with a report describing each Ramsar site (DCNR 1995). The Department of Environment and Primary Industries (DEPI) is the custodian of RAMSAR100. Most of the line work in RAMSAR100 was initially derived from 1:100,000 reference data. Because of its broader scale, this data was not always consistent with the cadastre and other more accurate features that have now been used to better define the majority of the Gunbower Forest Ramsar Site. The updated spatial definition of Gunbower Forest Ramsar Site is identified in a new RAMSAR25 spatial dataset.

This report details the written description of the Gunbower Forest Ramsar Site to explicitly define the Ramsar boundary, along with accompanying maps.

Methodology of RAMSAR 100 GIS layer boundary realignment

An expert panel was convened to provide advice on the original intent of the Ramsar site boundaries based on the description in DCNR (1995) and the RAMSAR100 spatial dataset.

Certificates of Title were obtained as required from the Office of the Surveyor-General, Victoria, to further clarify the intent of the Ramsar boundary.

DEPI manages the RAMSAR100 spatial dataset. The RAMSAR100 boundary of the Ramsar site was used as a guide to select appropriate features from the following 1:25,000 datasets:

- Vicmap Transport Road (1 February 2011)
- Vicmap Property (26 October 2010)
- Vicmap Hydro (1 January 2011)
- Vicmap Shared (for the state boundary) (11 November 2010)
- Public Land Management (PLM25) (8 December 2010).

High quality digital aerial photography was used where it was necessary to further clarify the original intent of the Ramsar boundary. The following images held by Land Victoria, DSE were used:

- landcover54_2010feb23_air_vis_50cm_mga54; and
- moira-shepparton_2009dec14_air_vis_30cm_mga55.

These datasets are represented in spatial products available through Vicmap¹ - <http://www.land.vic.gov.au>. Alternatively the Ramsar site boundaries can be viewed through the Department of Sustainability and Environments website, at Interactive Maps - <http://www.dse.vic.gov.au/about-dse/interactive-maps>.

The geographical coordinates (latitude, longitude) used in this report are based on Geographic Datum of Australia 1994 (GDA94) and the areas are calculated using Albers Equal Area projection. The hectares of the site presented in the body of the report have been calculated using Albers Equal Area projection and rounded to the nearest whole number (see Appendix 1 the site's area calculated to two decimal places).

¹ Terms and conditions do apply.

Location

The Gunbower Forest Ramsar Site is located along the Murray River, approximately 235 kilometres north-west of Melbourne (Figure 1). The Gunbower Forest Ramsar site covers an area of 20,218 ha. The Gunbower Forest Ramsar Site includes public land from the River Murray Reserve, Spence Bridge Education Area, State Forest, and Gunbower National Park.

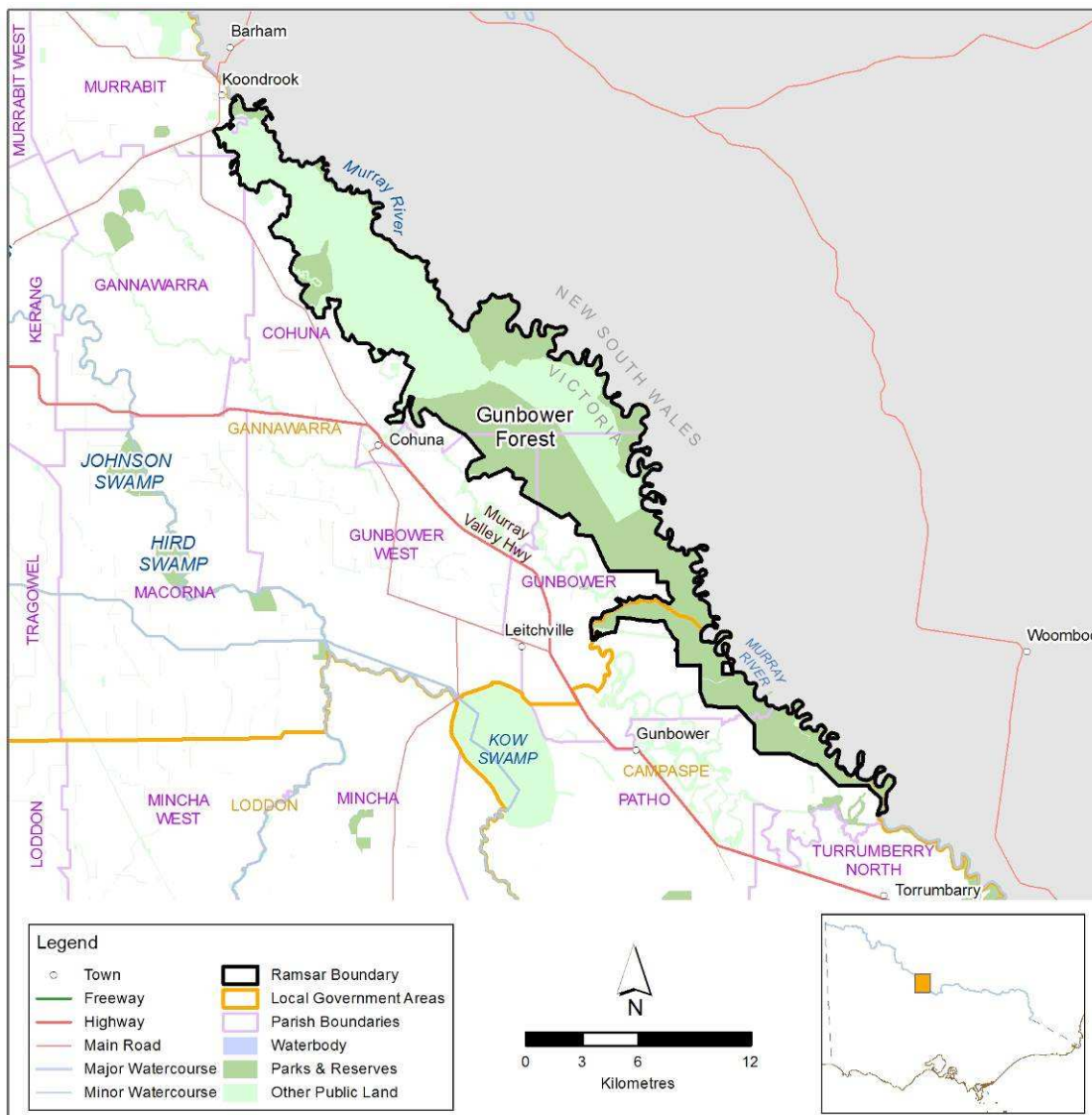


Figure 1: Gunbower Forest Ramsar Site location.

Written description of the Gunbower Forest Ramsar Site boundary

Points referred to in the description below are shown on the maps in Appendix 2. The generated boundary is represented by the spatial data in RAMSAR25 held in the DEPI Corporate Spatial Data Library. The datum used is Geographic Datum of Australia 1994(GDA94).

The boundary begins east of the Koondrook township on the State border on the edge of 2003\PP2403 at the point closest to 35°38'24.221"S 144°8'9.775"E (labelled as point A on the map, refer to Appendix 2 for all the maps). The boundary follows the State border (Murray River southern shoreline) in a generally south-easterly direction to 35°59'18.073"S 144°30'45.1"E (point B).

From Point B the boundary continues in a straight line in a westerly direction to the point closest to 35°59'18.281"S 144°30'40.91"E (point C) on the eastern edge of parcel 2077\PP3378.

The boundary continues along the public land boundary in a generally northerly direction (along the western edge of parcels 2052\PP3378, 2047\PP3378 to the point closest to 35°58'25.886"S 144°30'22.315"E (point D) on the Gunbower National Park boundary.

The boundary continues in a generally north-westerly direction along the Gunbower National Park boundary until reaching the point closest to 35°53'54.838"S 144°21'26.164"E (point E) on the Gunbower National Park boundary. Also included in the Ramsar site is parcel 2016\PP2732 and the road reserves within Gunbower National Park. The Ramsar boundary is a straight line across the road reserves joining the National Park sections (at 35°57'36.453"S 144°27'49.621"E, 35°57'35.939"S 144°27'48.392"E and 35°55'19.794"S 144°24'24.798"E, 35°55'19.104"S 144°24'24.814"E).

From point E the boundary continues in a straight line (i.e. continuation of cadastre) to the southern boundary of parcel 63B~7\PP2732 and then heads in a generally westerly direction along the southern boundary of parcels 63B~7\PP2732 and 1F~7\PP2732 to the point closest to 35°54'11.431"S 144°20'42.038"E (point F).

From point F the boundary follows a straight line in a westerly direction to the point nearest to 35°54'12.088"S 144°20'35.997"E (point G) on the corner of parcel 2\PS501541.

Excluded from the site are parcels 1B~7\PP2732, 1C~7\PP2732, 1A~7\PP2732, 2005\PP2732, 1D~7\PP2732, 2F~7\PP2732.

From point G the boundary continues in a generally north easterly direction along the public land boundary (parcel 2041\PP2732) to 35°53'2.462"S 144°21'25.69"E (point H). The boundary continues in a straight line in a north easterly direction to the point closest to 35°53'0.692"S 144°21'28.767"E (point I) on the corner of parcel 2015\PP2732.

The boundary continues in a generally north westerly direction along the Gunbower National Park until reaching the point closest to 35°47'9.422"S 144°14'19.895"E (point J) on the corner of parcel 2008\PP2403. The site also includes parcel 2030\PP2733.

From point J the boundary continues in a westerly direction along the southern and eastern edge of parcel 2006\PP2403, the eastern and southern edge of 75C~D\PP2403, along the northern edge of parcel 8\PS548912 to the corner at the point closest to 35°47'51.63"S 144°13'43.461"E (point K).

From point K the boundary continues in a straight line in a westerly direction to the point closest to 35°47'52.055"S 144°13'38.248"E (point L) on the corner of parcel 16B~B\PP2403. The boundary continues in a generally northerly direction along the northern edge of parcel 16B~B\PP2403, the western edge of parcel 16C~B\PP2403, and the western edge of parcel 9A~B\PP2403 to the point closest to 35°45'54.962"S 144°14'1.555"E (point M) on the corner of parcel 2\LP129728.

The boundary continues in a straight line (i.e. continuation of the cadastre) to the western boundary of parcel 9A~B\PP2403, then in a southerly direction along the edge of parcel 9A~B\PP2403, and then along the northern edge of parcel 39\PS501542 to the corner at the point closest to 35°46'3.178"S 144°13'13.578"E (point N). The boundary continues in a straight line in a south westerly direction to the corner of parcel 2\PS333791 at the point closest to 35°46'4.36"S 144°13'9.528"E (point O).

From point O the boundary continues in a generally north westerly direction along the western edge of parcels 9A~B\PP2403, 7B~B\PP2403, 9A~B\PP2403, 4C~B\PP2403, along the eastern edge of parcel 4B~B\PP2403, along the southern and western edge of parcel 9A~B\PP2403 and western edge of parcel 2A~B\PP2403. The boundary continues along the western edge of parcels 2C~A\PP2403, 8A~A\PP2403, 4C~A\PP2403, 4B~A\PP2403, 3B~A\PP2403, 3C~A\PP2403 to the point closest to 35°41'9.977"S 144°8'55.023"E (point P) on the corner of parcel 1C~A\PP2403.

From point P the boundary continues in a straight line in a south westerly direction to 144°8'50.701"E 35°41'12.909"S (point Q) on the boundary of parcel 1B~A\PP2403.

The boundary continues along the cadastral boundary in a generally north westerly direction along parcel 2C~A\PP2403 (to the point closest to 35°40'35.556"S 144°8'9.103 "E), then continues along the western edge of parcel 2006\PP2403 (to the point closest to 35°40'18.25"S 144°8'11.28 5"E). The boundary then continues along the southern, western, then northern edge of parcel 2003\PP2403 to the point closest to 35°39'22.166"S 144°7'56.18"E (point R).

The boundary continues in a straight line in a north easterly direction to 35°39'21.145"S 144°7'57.314 "E (point S) on the corner of parcel 7~11\PP5427.

From point S the boundary continues in a generally northerly direction along the western edge of parcels 7~11\PP5427, 8~11\PP5427, 2003\PP2403 and returning to the starting point at A.

References

DEWHA (2011). Additional guidelines for written boundary descriptions for Australian Ramsar wetlands, September 2011, Department of the Environment, Water, Heritage and the Arts. Canberra.

DEWHA (2010). Guidelines for Written Boundary Descriptions for Australian Ramsar Wetlands, Version 1, 27 August 2010. Department of the Environment, Water, Heritage and the Arts. Canberra.

DEWHA (2008). Mapping Specifications for Australian Ramsar Wetlands. Module 1 of the National Guidelines for Ramsar Wetlands – Implementing the Ramsar Convention in Australia. Department of the Environment, Water, Heritage and the Arts. Canberra.

DCNR (1995). *Victorian Ramsar Sites: Definition and Boundary Clarification Project Report*. National Parks Service, Department of Conservation and Natural Resources. Victoria.

DSE (2003). *Gunbower Forest Ramsar Site: Strategic Management Plan*. Department of Sustainability and Environment. Victoria.

Appendix 1

Area in hectares

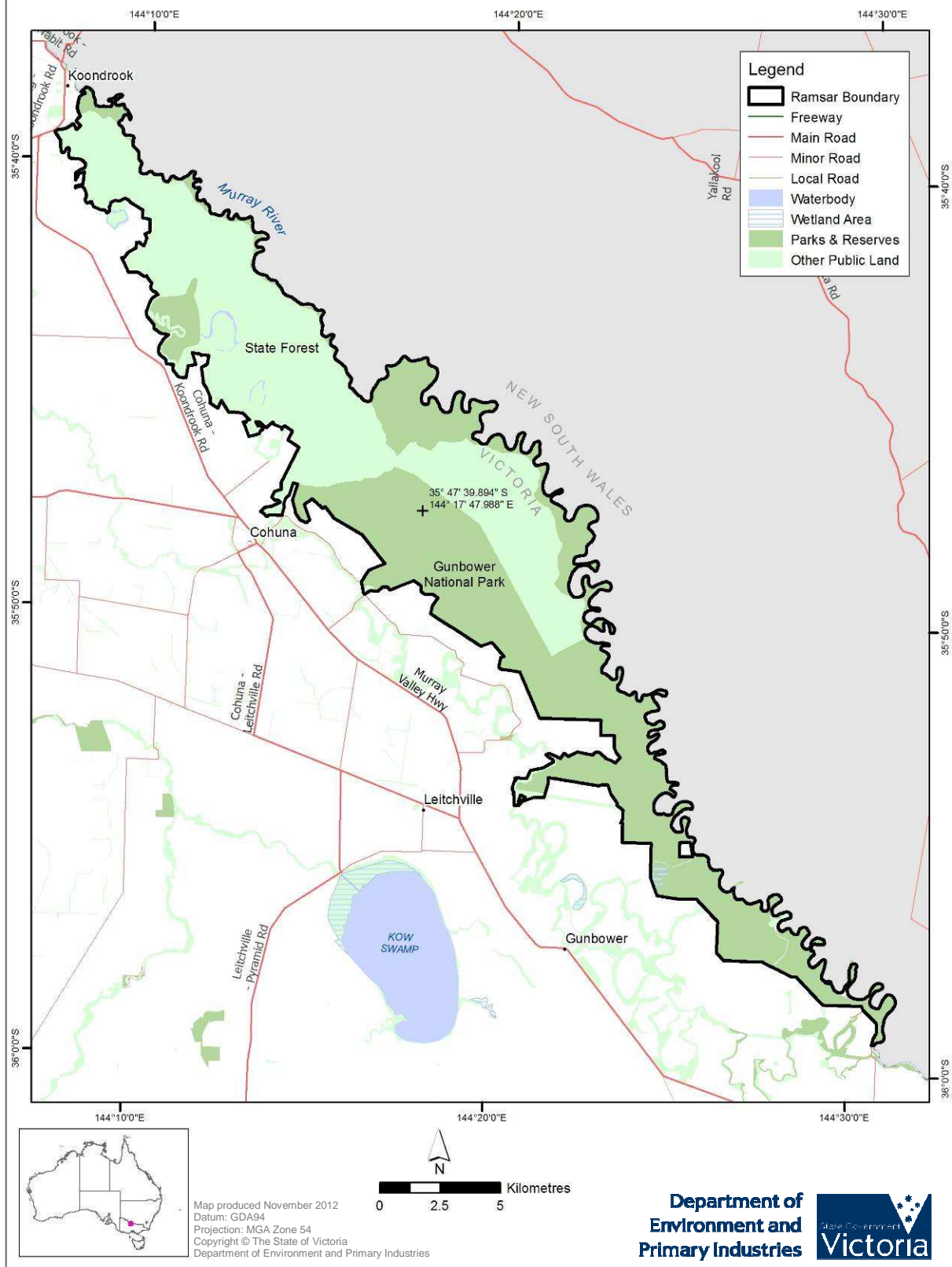
Ramsar site name	Albers equal area
Gunbower Forest	20217.59

Appendix 2

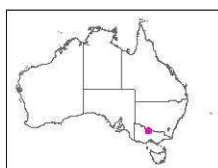
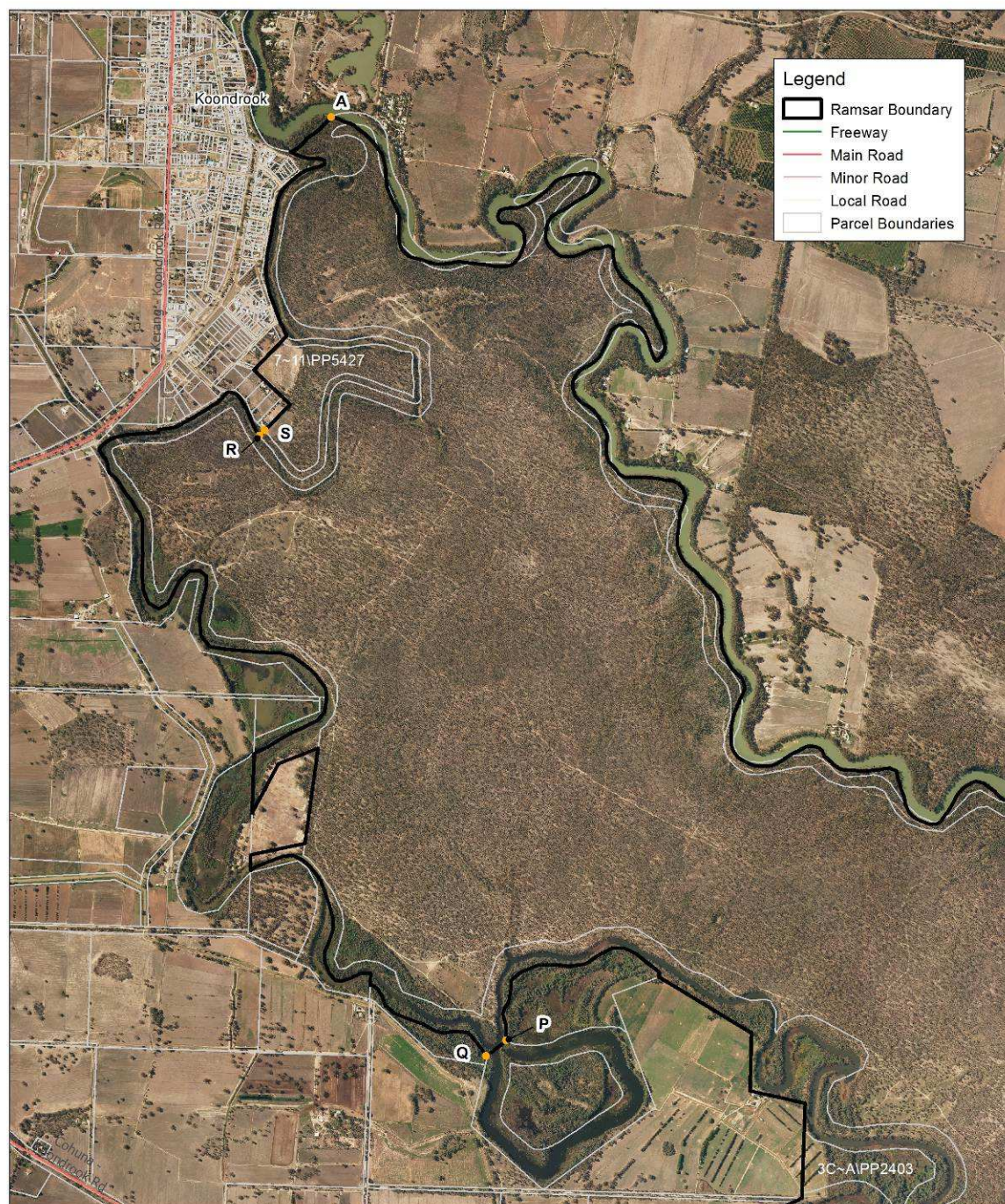
Maps

Map Number	Description
1	Overview.
2	Point A and points P to S.
3	Points B to D.
4	Points E to I.
5	Points J to O.

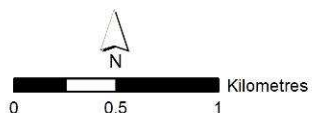
Map 1 Gunbower Forest Ramsar Site



Map 2 Gunbower Forest Ramsar Site



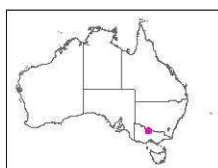
Map produced December 2012
 Datum: GDA94
 Projection: MGA Zone 54
 Copyright © The State of Victoria
 Department of Environment and Primary Industries



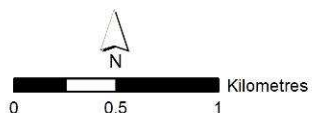
**Department of
 Environment and
 Primary Industries**



Map 3 Gunbower Forest Ramsar Site



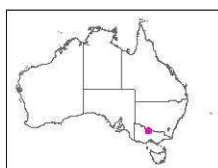
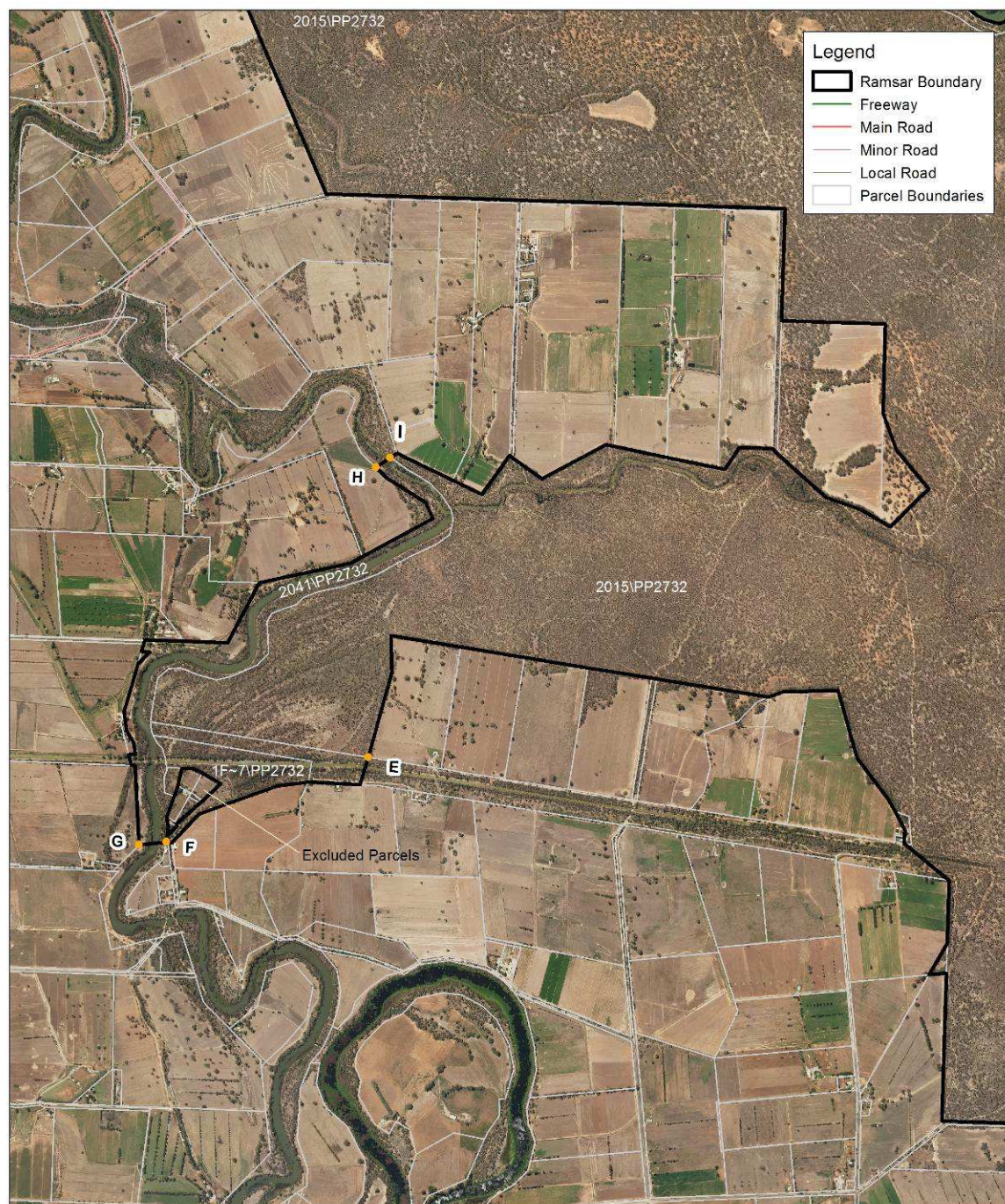
Map produced December 2012
 Datum: GDA94
 Projection: MGA Zone 54
 Copyright © The State of Victoria
 Department of Environment and Primary Industries



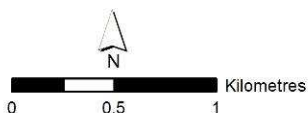
**Department of
 Environment and
 Primary Industries**



Map 4 Gunbower Forest Ramsar Site



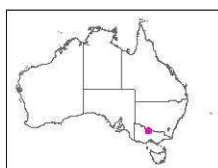
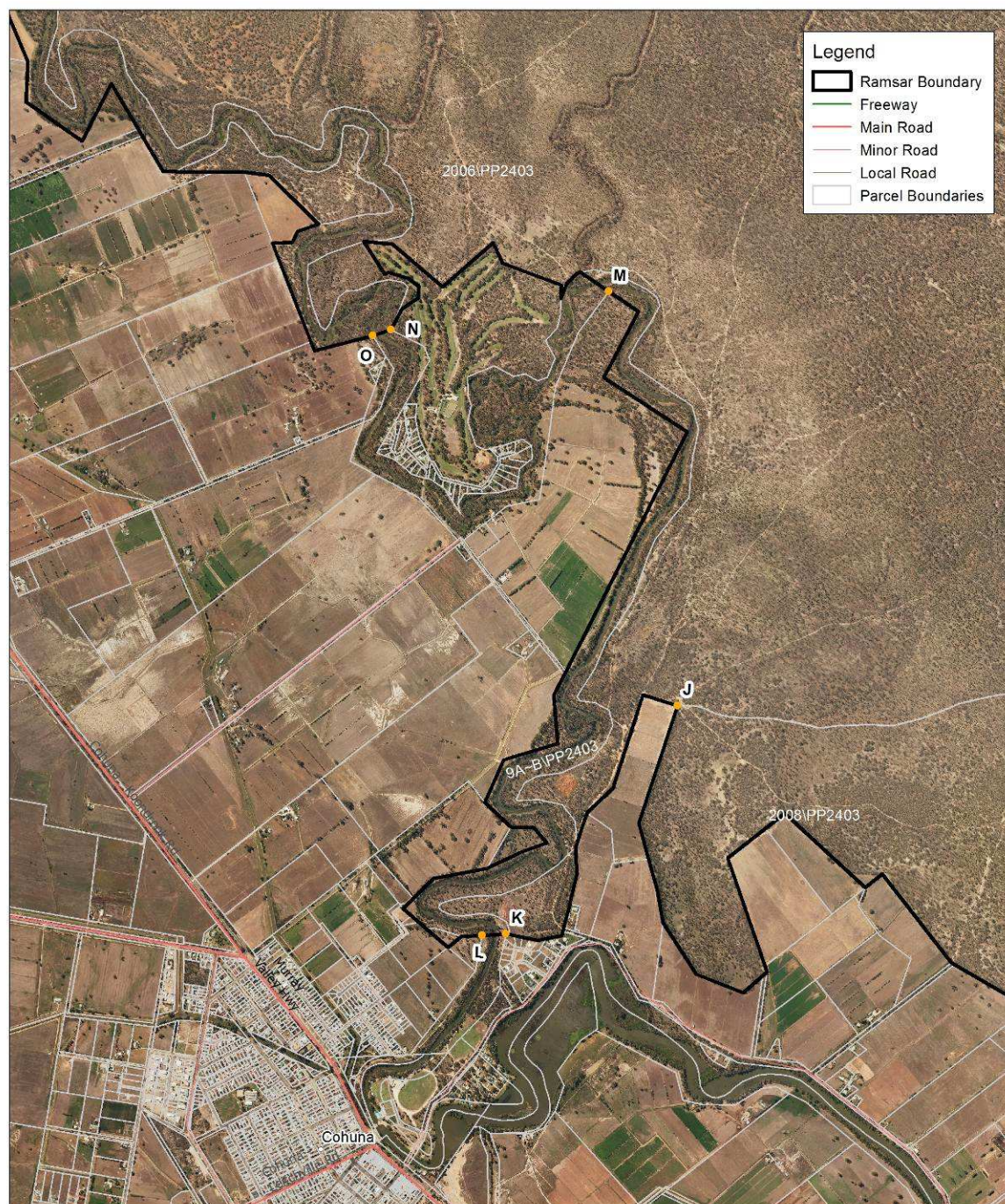
Map produced December 2012
 Datum: GDA94
 Projection: MGA Zone 54
 Copyright © The State of Victoria
 Department of Environment and Primary Industries



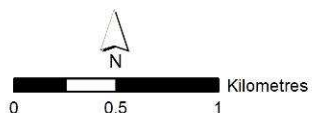
**Department of
 Environment and
 Primary Industries**



Map 5 Gunbower Forest Ramsar Site



Map produced December 2012
 Datum: GDA94
 Projection: MGA Zone 54
 Copyright © The State of Victoria
 Department of Environment and Primary Industries



**Department of
 Environment and
 Primary Industries**



Customer Service Centre **136 186**

www.depi.vic.gov.au