

Gippsland Lakes Ramsar Site Boundary Description

Technical Report



Published by the Victorian Government Department of Environment and Primary Industries Melbourne, December 2013

© The State of Victoria Department of Environment and Primary Industries Melbourne 2013

This publication is copyright. No part may be reproduced by any process except in accordance with the provisions of the *Copyright Act 1968*.

Authorised by the Victorian Government, 8 Nicholson Street, East Melbourne.

ISBN 978-1-74287-871-3 (online)

For more information contact the DEPI Customer Service Centre 136 186

Citation: DEPI (2013) Gippsland Lakes Ramsar Site Boundary Description Technical Report. Department of Environment and Primary Industries, East Melbourne, Victoria.

Disclaimer

This publication may be of assistance to you but the State of Victoria and its employees do not guarantee that the publication is without flaw of any kind or is wholly appropriate for your particular purposes and therefore disclaims all liability for any error, loss or other consequence which may arise from you relying on any information in this publication.

Accessibility

If you would like to receive this publication in an accessible format, such as large print or audio, please telephone 136 186, or email customer.service@depi.vic.gov.au

Deaf, hearing impaired or speech impaired? Call us via the National Relay Service on 133 677 or visit www.relayservice.com.au

This document is also available in PDF format on the internet at www.depi.vic.gov.au

Cover photo: Yvette Baker, November 2008.

Contents

Introduction	1
Methodology of RAMSAR 100 GIS layer boundary realignment	2
Location	3
Written description of the Gippsland Lakes Ramsar Site boundary	4
References	11
Appendix 1	12
Appendix 2	14
Appendix 3	15

Introduction

Ramsar wetlands are wetlands of international importance listed under the Convention on Wetlands (Ramsar, Iran 1971). Victoria has 11 wetlands listed under this convention including the Gippsland Lakes Ramsar Site.

It is a requirement of the Convention on Wetlands that a suitable map or maps are provided for each Ramsar wetland. The Australian Government Department of the Environment requires that both the written description and the spatial data of the Ramsar site boundaries are accurate. This information is used to gazette the boundary of the declared Ramsar wetland in accordance with Section 327 of the *Environment Protection and Biodiversity Conservation Act 1999* (EPBC Act). Under the EPBC Act there are requirements for approval of activities which have, or are likely to have a significant impact on the ecological character of a declared Ramsar wetland. Precise identification of site boundaries helps to ensure that the exact boundaries of the Ramsar site can be easily identified, which can facilitate compliance with the EPBC Act as well as its effective enforcement.

The RAMSAR100 spatial dataset is a polygon layer that identifies each Victorian Ramsar area individually. RAMSAR100 was produced in conjunction with a report describing each Ramsar site (DCNR 1995). The Department of Environment and Primary Industries (DEPI) is the custodian of RAMSAR100. Most of the line work in RAMSAR100 was initially derived from 1:100,000 reference data. Because of its broader scale, this data was not always consistent with the cadastre and other more accurate features that have now been used to better define the majority of the Gippsland Lakes Ramsar Site. The updated spatial definition of Gippsland Lakes Ramsar Site is identified in a new RAMSAR25 spatial dataset.

This report details the written description of the Gippsland Lakes Ramsar Site to explicitly define the Ramsar boundaries, along with accompanying maps.

Methodology of RAMSAR 100 GIS layer boundary realignment

An expert panel was convened to provide advice on the original intent of the Ramsar site boundaries based on the description in DCNR (1995) and the RAMSAR100 spatial dataset.

Certificates of Title were obtained as required from the Office of the Surveyor-General, Victoria, to further clarify the intent of the Ramsar boundary.

The current RAMSAR100 boundary of the Ramsar area was used as a guide to select appropriate features from the following 1:25,000 datasets:

- Parks and Conservation Reserves (15 June 2011)
- Public Land Management (PLM25) (15 June 2011)
- Road Network 1:25,000 - Vicmap Transport – Road (27 March 2013)
- Vicmap Property (7 May 2013)
- Watercourse Network 1:25,000 – Vicmap Hydro (27 March 2013)
- Water Area 1:25,000 – Vicmap Hydro (14 May 2013)

In locations where these datasets did not adequately represent the boundary, point coordinates were generated and/or features were traced from high resolution (50 cm pixels) digital aerial photography. The following image held by Land Victoria, DEPI was used: landcover55-sth_2009dec14_air_vis_50cm_mga55.

These datasets are represented in spatial products available through Vicmap¹ - <http://www.land.vic.gov.au>. Alternatively the Ramsar site boundaries can be viewed through the DEPI website, at Interactive Maps - <http://www.depi.vic.gov.au/about-depi/interactive-maps>.

A list of coordinates (latitude, longitude) is provided in Appendix 1. All coordinates listed in this document are based on the 1994 Geocentric Datum of Australia (GDA94).

All hectares stated in the body of the report have been calculated in the projection Albers Equal Area and rounded to the nearest whole number. Appendix 2 lists the hectares for each section of this Ramsar Site to the two nearest decimal points. Appendix 3 includes maps of this Ramsar Site.

¹ Terms and conditions do apply.

Location

The Gippsland Lakes Ramsar Site is located 200 kilometres east of Melbourne, south of the Eastern Highlands and east of the La Trobe valley. It is the largest estuarine lagoon system in Australia covering an area of 61,150 ha.



Figure 1: Gippsland Lakes Ramsar Site location.

Written description of the Gippsland Lakes Ramsar Site boundary

The site consists of a system of thirteen lakes and swamplands including; Sale Common, Lake Reeve Lake Wellington, Lake Victoria, Lake King, Lake Bunga, Lake Tyers and Macleod Morass. Points referred to in the description are shown on the maps in Appendix 3. The generated boundary described below is represented by the spatial data in RAMSAR25 held in the DEPI Corporate Spatial Data Library. The datum used is Geographic Datum of Australia 1994(GDA94).

Sale Common

This part of the Ramsar site is located south of the Sale township, between the South Gippsland Highway and Flooding Creek. The Ramsar site is comprised of parcels 2015\PP3468, 2017\PP3468, 2021\PP3468, 2018\PP3468, 2020\PP3468 and 2019\PP3468 which form the Sale Common Nature Conservation Reserve.

Lake Reeve (southern section)

This part of the Ramsar site is located in Longford, Flamingo Beach, Dutson Downs, Glomar Beach and The Honeysuckles and forms a part of the Gippsland Lakes Coastal Park. This part of the site includes parcel 17A~C\PP3909, and a part of parcels 46F~C\PP3909 and 3A~A\PP2558. Parcels 1B~C\PP3909, 13~C\PP3909, and 13A~C\PP3909 (located in the Honeysuckles) are excluded from the Ramsar site.

The boundary commences at the point closest to coordinate 38°16'44.453"S 147°16'55.29"E (Point A), located on the western edge of the public land boundary for Carr Creek Water Frontage. From Point A the boundary continues in a straight line in a northerly direction, crossing Carr Creek, to the point closest to coordinate 38°16' 41.63"S 147°16'55.87"E (Point B) on the south-east corner of parcel 1~A\PP2558. The boundary then continues to follow the public land boundary along the eastern edge of parcel 3A~A\PP2558 in a generally southerly direction until it reaches the edge of parcel 17A~C\PP3909 which forms a part of the Gippsland Lakes Coastal Park.

The boundary continues to follow the edge of parcel 17A~C\PP3909 in a generally north-easterly direction passing through Dutson Downs and Flamingo Beach and then a generally south-westerly direction passing through Glomar Beach and The Honeysuckles. At the western corner of parcel 17A~C\PP3909 the boundary continues in a north-easterly direction until it reaches the western edge of parcel 46F~C\PP3909. The boundary continues in a generally northerly direction along the Crown land boundary (parcel 46F~C\PP3909) returning to the start at Point A.

Lake Reeve, Lake Victoria, Lake Wellington, Lake King, Lake Tyers

The boundary commences at the point closest to coordinate 38°15'13.871"S 147°19'4.162"E (labelled as Point C on the map) on the boundary between Flamingo Beach and Golden Beach. The boundary continues in a north-easterly direction along the northern shoreline of Lake Reeve (as defined by Water Area 1:25,000 – Vicmap Hydro (14 May 2013)) to the point closest to coordinate 38°15' 10.44" S 147° 19' 6.59" E (Point D). From Point D the boundary continues in a straight line in a north easterly direction to the point closest to coordinate 38°15' 8.65" S 147°19 ' 7.32" E (Point E).

From Point E the boundary continues in a generally north-easterly direction along the northern shoreline of Lake Reeve (as defined by Water Area 1:25,000 – Vicmap Hydro) through the Gippsland Lakes Coastal Park to the point closest to coordinate 38°11'37.751"S 147°23'19.426"E (Point F). From Point F the boundary continues in a straight line in a north easterly direction to the point closest to coordinate 38°13' 46.69" S 147°21' 3.96" E (Point G).

From Point G the boundary continues in a generally north-easterly direction along the northern shoreline of Lake Reeve (as defined by Water Area 1:25,000 – Vicmap Hydro) to the point closest to coordinate 38°12' 10.99" S 147°22' 49.53" E (Point H). From Point H the boundary continues in a straight line, crossing the Longford-Golden Beach Road, in a north easterly direction to the point closest to coordinate 38°12' 9.57" S 147°22' 52.41" E (Point I). The boundary continues in a north-easterly direction along the northern shoreline of Lake Reeve (as defined by Water Area 1:25,000 – Vicmap Hydro) to the point closest to coordinate 38°11' 37.75" S 147°23' 19.43" E (Point J), which is located in Dutson Downs.

From Point J the boundary continues in a generally north-easterly direction along the edge of parcel 34A\PP2190 to the point closest to coordinate 38°11'30.675"S 147°23'2 4.309"E (Point K). From Point K the boundary continues in a generally north-easterly direction along the northern shoreline (as defined by Water Area 1:25,000 – Vicmap Hydro) of Lake Reeve passing through the sections of the Gippsland Lakes Coastal Park located in Seacombe and Loch Sport to the point closest to coordinate 38°2'58.652"S 147°3 5'8.544"E (Point L). From Point L the boundary continues in a

straight line in a north-westerly direction to the point closest to coordinate 38°2'57.719"S 147°35'7.181"E (Point M), which is located next to the road reserve for Cliff Street, Loch Sport.

From Point M the boundary continues in a generally north easterly direction along the Crown land boundary (parcels 3K\PP3479, 2C\PP3479 and 3M\PP3479). The boundary continues along the Crown land boundary in a north-easterly then south-westerly direction (parcels 2011\PP2184, 1F\PP3479, 23B\PP2184) around Lake Victoria to the point closest to coordinate 38°4'29.63"S 147°26'58.348"E (Point N) .

From Point N the boundary continues in a straight westerly direction to the point closest to coordinate 38°4'29.671"S 147°26'36.708"E (Point O), which is adjacent to the McLennan Strait. The boundary continues in a generally southerly direction (along the edge of parcels 2001\PP2119, 17B\PP3479, 1F~1\PP5702, 11~1\PP5702, 12~1\PP5702) passing through the township of Seacombe to the point closest to coordinate 38°7'15.51"S 147°25'20.935"E (Point P).

From Point P the boundary continues in a westerly direction to the point closest to coordinate 38°7'15.391"S 147°25'20.106"E (Point Q) on the corner of parcel 3H\PP3479. The boundary continues along the Crown land boundary in a north westerly direction (parcel 3H\PP3479) and then in a generally south westerly direction (parcels 29B\PP2190, 2010\PP2558, 32A~B\PP2558) to the point closest to coordinate 38°8'30.69"S 147°19'27.472"E (Point R), located next to Tucker Swamp in Dutson Downs.

From Point R the boundary continues in a straight line in a south easterly direction to the point closest to coordinate 38°8'58.711"S 147°19'52.815"E (Point S), then south westerly to the point closest to coordinate 38°9'24.779"S 147°19'8.963"E (Point T), then south easterly to the point closest to coordinate 38°9'47.354"S 147°19'28.912"E (Point U), then north easterly to the point closest to coordinate 38°9'15.975"S 147°20'24.841"E (Point V), then north easterly to the point closest to coordinate 38°9'17.162"S 147°21'25.292"E (Point W) on the corner of parcel 34~B\PP2558.

From Point W the boundary continues along the Crown land boundary (around Lake Coleman Wildlife Reserve) in a generally south-easterly, then south-westerly and then northerly direction (parcels 34~B\PP2558, 33B~B\PP2558). The boundary continues in a generally northerly, then westerly direction around Lake Wellington (along the southern edge of parcels 32A~B\PP2558, 21Y6\PP2668, 21Y5\PP2668) to the point closest to coordinate 38°8'15.58"S 147°14'4.875"E (Point X) on the corner of parcel 21P1\PP2668.

From Point X the boundary continues in a southerly and then south westerly direction around the Dowd Morass Wildlife Reserve (parcels 21P1\PP2668, 21Y2\PP2668, 21Y3\PP2668, 21R1\PP2668, 21Y4\PP2668, 21Z\PP2668, 21Y\PP2668) to the point closest to coordinate 38°9'30.803"S 147°10'50.673"E (Point Y), located on the south-west corner of parcel 21Y\PP2668.

From Point Y the boundary continues in a generally northerly direction along the edge of parcel G4\PP2668 to the point closest to coordinate 38°8'11.8"S 147°11'50.339"E (Point Z). From Point Z the boundary continues in a northerly direction in a straight line, crossing the LaTrobe River to the point closest to coordinate 38°8'2.92"S 147°11'50.315"E (Point AA), located on the southern edge of parcel 75~2\PP3468.

The parcel of Commonwealth land located in Dutson, parcel 41\TP678929 is excluded from the Ramsar site.

From Point AA the boundary continues along the Crown land boundary in a generally northerly direction (parcels 83A~2\PP3468, 81~2\PP3468, 83~2\PP3468, 82~2\PP3468, 82A~2\PP3468, 65A~2\PP3468, 55~2\PP3468, 56~2\PP3468, 57A~2\PP3468, 56B~2\PP3468, 46E~2\PP3468, 82A~2\PP3468, 85J~2\PP3341, 34~64\PP3082, 18N~2\PP3341, 93J~2\PP3341) to the point closest to coordinate 147°14'30.561"E 38°3'37.496"S (Point AB) on the south-east corner of parcel 93J~2\PP3341, located in Clydebank. The boundary continues in a westerly direction in a straight line, crossing the road reserve, to the point closest to coordinate 38°3'37.476"S 147°14'29.735"E (Point AC).

From Point AC the boundary continues in a generally westerly and then northerly direction along the Crown land boundary (parcel 93H~2\PP3341) to the point closest to coordinate 38°3'13.899"S 147°13'57.554"E (Point AD). The boundary continues in a straight line, crossing the road reserve, in a north westerly direction to the point closest to coordinate 38°3'13.307"S 147°13'57.21"E (Point AE).

From Point AE the boundary continues in a generally westerly then northerly direction along the Crown land boundary (parcel 93G~2\PP3341) to the point closest to coordinate 38°2'44.13"S 147°13'55.812"E (Point AF). The boundary continues in a straight line, crossing the road reserve in a north westerly direction to the point closest to coordinate 38°2'43.363"S 147°13'53.286"E (Point AG).

From Point AG the boundary continues along the Crown land boundary in a generally north westerly direction along the edge of parcel 19F~2\PP3341 to the point closest to coordinate 38°2'23.328"S 147°13'41.576"E (Point AH). From Point

AH the boundary continues in a northerly direction, crossing the road reserve to the point closest to coordinate 38°2'22.682"S 147°13'41.66"E (Point AI).

The boundary continues in a northerly direction along the Crown land boundary to the point closest to coordinate 38°2'16.255"S 147°13'44.129"E (Point AJ). From Point AJ the boundary continues in a northerly direction through the Clydebank Morass Wildlife Reserve to the point closest to coordinate 38°1'27.748"S 147°13'43.978"E (Point AK) which is located on the Avon River.

From Point AK the boundary continues in a generally easterly direction along the southern edge of the Avon River to the corner of the parcel 13J~2\PP3341, at the confluence of the Avon and Perry Rivers. The boundary then continues in a generally northerly direction along the Perry River (along the western edge of parcel 2C~62\PP3082). The boundary then continues in an easterly direction along the northern edge of parcel 2C~62\PP3082 to the point closest to coordinate 38°1'57.78"S 147°16'31.592"E (Point AL) on the north-east corner of parcel 2C~62\PP3082, located in Perry Bridge.

From Point AL the boundary continues in an easterly direction, crossing the road reserve, to the point closest to coordinate 38°1'57.897"S 147°16'32.399"E (Point AM) on the north-west corner of parcel 2~62\PP3082. The boundary continues in a generally easterly direction around Lake Wellington along the Crown land boundary (parcels 2~62\PP3082, 3B~62\PP3082, 4~62\PP3082, 34~64\PP3082, 4A~63\PP3082, 4~64\PP3082, 5~54\PP3082, 4~4\PP2119, 5~4\PP2119, 6~5\PP2119, 5~4\PP2119, 34~64\PP3082, 2B~20\PP2119, 2A~20\PP2119). The boundary continues along the Crown land boundary in a generally southerly and then northerly direction (parcels 3C~19\PP2119, 2A~20\PP2119, 2B~20\PP2119, 5~20\PP2119, 2B~20\PP2119, 3A~20\PP2119) to the point closest to coordinate 38°4'1.749"S 147°26'41.489"E (Point AN), located in Merlieu.

From Point AN the boundary continues in a straight line in a north-easterly direction, crossing the road reserve to the point closest to coordinate 38°4'1.245"S 147°26'42.113"E (Point AO).

From Point AO the boundary continues along the Crown land boundary in a generally north-easterly and then easterly direction around Victoria Lagoon and the Backwater Morass (along the edge of parcels 1B~20\PP2119, 2A~14\PP2119, 4A~14\PP2119, 7~13\PP2119, 6~13\PP2119, 4~10\PP2119, 17A~4\PP2118, 17~3\PP2118, 2A~2\PP2118, 2C~2\PP2118, 2D~2\PP2118) to the point closest to coordinate 38°1'27.644"S 147°29'9.835"E (Point AP), on the north-east corner of parcel 2D~2\PP2118.

The area of private land between Victoria Lagoon and Lake Victoria is excluded from the Ramsar site..

From Point AP the boundary continues in a straight line, in an easterly direction, crossing the boundary between Bengworden and Goon Nure to the point closest to coordinate 38°1'27.676"S 147°29'10.661"E (Point AQ) on the corner of parcel 4C~2\PP2702.

From Point AQ the boundary continues along the Crown land boundary in a generally north-easterly direction (parcels 4C~2\PP2702, 34B~21\PP2702, 2001\PP2702, 39B~21\PP2702, 39C~21\PP2702) to the corner of parcel 39C~21\PP2702 at the point closest to 37°59'48.233"S 147°33'15.421"E (Point AR). The boundary continues in a straight line in a north-easterly direction, crossing the road reserve to the point closest to coordinate 37°59'47.974"S 147°33'16.323"E (Point AS).

From Point AS the boundary continues along the Crown land boundary in a northerly direction, along the western edge of parcel 37D~21\PP2702 to the corner, at the point closest to coordinate 37°59'29.407"S 147°33'21"E (Point AT). The boundary continues in a north-westerly direction, crossing the road reserve to the point closest to coordinate 37°59'28.677"S 147°33'20.665"E (Point AU) on the south-west corner of parcel 37B~21\PP2702.

From Point AU, the boundary continues along the Crown land boundary in a northerly and then a generally easterly direction, along the edge of parcel 37B~21\PP2702 to the corner, at the point closest to coordinate 147°34'18.282"E 37°59'17.365"S (Point AV). The boundary continues in a straight line in a southerly direction, crossing the road reserve to the point closest to coordinate 37°59'18.036"S 147°34'18.378"E (Point AW) on the corner of parcel 37D~21\PP2702.

From Point AW the boundary continues along the Crown land boundary (parcel 37D~21\PP2702) in an easterly direction to the point closest to coordinate 37°59'19.113"S 147°34'26.317"E (Point AX). The boundary continues in a straight northerly line, crossing the road reserve to the point closest to coordinate 37°59'18.474"S 147°34'26.462"E (Point AY) on the south-west corner of parcel 37C~21\PP2702.

From Point AY the boundary continues along the Crown land boundary (around parcel 37C~21\PP2702) to the point closest to coordinate 37°59'19.065"S 147°34'37.904"E (Point AZ). From Point AZ the boundary continues in a straight line, crossing the road reserve, to the point closest to coordinate 37°59'19.708"S 147°34'37.765"E (Point BA). The

boundary continues along the Crown land boundary in a north-easterly direction (parcels 37D~21\PP2702, 12B~21\PP2702) to the point closest to coordinate 37°59'14.763"S 147°34'54.433"E (Point BB). From Point BB the boundary continues in a straight northerly line, crossing the road reserve, to the point closest to coordinate 37°59'14.068"S 147°34'54.596"E (Point BC) on the south-west corner of parcel 12A~21\PP2702.

From Point BC the boundary continues along the Crown land boundary (around parcel 12A~21\PP2702) to the point closest to coordinate 37°59'10.076"S 147°35'16.805"E (Point BD) on the south-east corner of parcel 12A~21\PP2702. The boundary continues in a straight southerly line, crossing the road reserve to the point closest to coordinate 37°59'10.77"S 147°35'16.649"E (Point BE).

From Point BE the boundary continues along the Crown land boundary in a generally easterly and then north easterly direction (parcels 12B~21\PP2702, 11D~21\PP2702, 2008\PP2702, 11B~25\PP2702) to the point closest to coordinate 37°58'41.761"S 147°37'19.817"E (Point BF) on the edge of the Goon Nure township.

From Point BF the boundary continues in a north easterly direction along the shoreline (as defined by Water Area 1:25,000 – Vicmap Hydro) of Lake Victoria to the point closest to coordinate 37°58'5.889"S 147°38'7.284"E (Point BG) on the western edge of parcel 164C\PP2042.

The boundary continues in a north-westerly then a generally north-easterly direction along the Crown land boundary (parcels 164C\PP2042, 23B\PP2184, 164B\PP2042, 141D\PP2042 (crossing Forge Creek), 141C\PP2042, 28\PP5627, 2007\PP2184, 146H\PP2042), to the point closest to coordinate 37°54'29.439"S 147°43'54.273"E (Point BH) on the corner of 146H\PP2042 at Paynesville.

From Point BH the boundary continues in a north easterly direction along the shoreline (as defined by Water Area 1:25,000 – Vicmap Hydro) of Lake King to the point closest to coordinate 37°54'11.986"S 147°43'54.872"E (Point BI). The boundary continues in a westerly direction to the point closest to coordinate 37°54'11.902"S 147°43'53.63"E (Point BJ) on the corner of parcel 146E\PP2042.

From Point BJ the boundary continues in a generally westerly and then north-easterly direction along the Crown land boundary (parcels 146E\PP2042, 2003\PP2042, 146J\PP2042, 2002\PP2042, 146J\PP2042, 146H\PP2042, 34A~A\PP2042, 2007\PP2184) to the point closest to coordinate 37°52'56.076"S 147°41'14.02"E (Point BK).

From Point BK the boundary continues in a generally north-easterly direction and then south-westerly direction along the shoreline (high water mark) of Lake King (as defined by the high water mark of the lake extent as interpreted from the aerial photography image: landcover55-sth_2009dec14_air_vis_50cm_mga55), excluding the Mitchell River Silt Jetties, to the point closest to coordinate 37°52'46.903"S 147°41'3.017"E (Point BL), located in Eagle Point.

From Point BL the boundary continues in a straight line in a westerly direction to the point closest to coordinate 37°52'46.358"S 147°40'55.384"E (Point BM), located in East Bairnsdale. The boundary then continues in a south-westerly direction to the point closest to coordinate 37°52'48.189"S 147°40'54.131"E (Point BN). From Point BN the boundary continues in a south-westerly direction to the point closest to coordinate 37°52'52.43"S 147°40'48.923"E (Point BO), on the edge of parcel 80\PP2236.

From Point BO the boundary continues in a generally north-westerly and the south-easterly direction along the Crown land boundary (parcels 80\PP2236, 79C\PP2236, 79A\PP2236) around the Jones Bay Wildlife Reserve to the corner of parcel 79A\PP2236 at the point closest to coordinate 37°50'24.417"S 147°39'32.308"E (Point BP). The boundary continues in a straight line in a south-easterly direction, crossing the road reserve to the point closest to coordinate 37°50'25.985"S 147°39'32.817"E (Point BQ) on the corner of parcel 79B\PP2236.

From Point BQ the boundary continues in a generally south-easterly and then northerly direction along the Crown land boundary (parcels 79B\PP2236, 80\PP2236, 2007\PP2184, 60B~A\PP2236, 2007\PP2184, 45B~A\PP2236, 45A~A\PP2236, 1B~2\PP3476, L6A~1\PP3476) to the point closest to coordinate 37°46'51.505"S 147°43'39.099"E (Point BR), located on the western edge of the Nicholson River Water Frontage in Sarsfield. From Point BR the boundary continues in north-easterly direction in a straight line to the point closest to coordinate 37°46'48.944"S 147°43'40.146"E (Point BS).

From Point BS the boundary continues along the Crown land boundary in a generally northerly direction (parcels L6A~1\PP3476, 1A\PP5700) until it reaches the north-west corner of parcel 1A~\PP5700, which is next to the southern edge of the road reserve for Great Alpine Road. The boundary continues along the northern edge of parcel 1A~\PP5700 until it reaches the north-east corner of this parcel.

North of the Great Alpine Road in the township of Sarsfield the parcels 3~9\PP5700, 6A~A\PP5700 and 1A~A\PP5700 which form a part of the Nicholson River Water Frontage are included within the Ramsar site.

From the north-east corner of parcel 1A~A\PP5700 the boundary continues in a generally southerly direction and then north-easterly direction along the Crown land boundary (parcels 1A\PP5700, 90E\PP3534, 2D\PP2270, 2007\PP2184, 8D\PP2270, 27D~A\PP2270) to the point closest to coordinate 37°50'3.06"S 147°46'59.922"E (Point BT). The boundary continues northerly in a straight line, crossing the road reserve to the point closest to coordinate 37°50'2.431"S 147°47'0.148"E (Point BU). From Point BU the boundary continues in a generally northerly and then southerly direction along the Crown land boundary (parcel 25C\PP2270) to the point closest to coordinate 37°50'3.39"S 147°47'7.96"E (Point BV).

From Point BV the boundary continues in a straight line, crossing the road reserve in a south-westerly direction to the point closest to coordinate 37°50'3.942"S 147°47'7.104"E (Point BW). From Point BW the boundary continues along the Crown land boundary in a generally southerly direction (parcels 27D~A\PP2270, 101D\PP2270, 101C\PP2270) to the point closest to coordinate 37°51'12.462"S 147°47'55.817"E (point BX). The boundary continues in a straight line in a south-easterly direction crossing the Tambo River to the point closest to coordinate 37°51'15.406"S 147°48'2.021"E (Point BY).

From Point BY the boundary continues in a generally southerly direction along the Crown land boundary (parcels 82D\PP2270, 2006\PP2270, 1A~F\PP5526, 12~A\PP5526, 2007\PP2184, 7~H\PP5526, 7~I\PP5526, 10~J\PP5526, 77F\PP2270, 78D\PP2270, 78E\PP2270, 77F\PP2270, 40B\PP2412, 52\PP5608, 40B\PP2412, 5R\PP2412, 5S\PP2412, 40B\PP2412, 4C\PP2412, 15B~B\PP5401, 7C~B\PP5401, 27~A\PP5401, 27A~A\PP5401, 27~A\PP5401, 85C\PP2412, 2004\PP5447, 43A\PP5447, 2004\PP5447, 6~A\PP5218, 62\PP5218, 5~A\PP5218, 62\PP5218, 9~4\PP5218, 6A~3\PP5218, 8~4\PP5218, 7~4\PP5218, 2001\PP5218, 6~4\PP5218, 2002\PP5261, 35\PP5261, 36\PP5261, 37\PP5261, 38\PP5261), passing through the localities of Metung, Nyerimilang, Lakes Entrance, Lake Bunga and Lake Tyers Beach to the point closest to coordinate 37°51'40.481"S 148°3'46.431"E (Point BZ), on the corner of parcel 38\PP5261.

From Point BZ the boundary then continues in a straight line in an easterly direction, crossing the road reserve for Red Bluff Road to the point closest to coordinate 37°51'40.379"S 148°3'47.246"E (Point CA) on the corner of parcel 39\PP5261.

From Point CA the boundary continues in a generally easterly and the westerly direction along the Crown land boundary (parcels 39\PP5261, 2003\PP5261, 40\PP5261, 40A\PP5261, 2003\PP5261, 51\PP5261, 2005\PP5261, 16J\PP5261, 16K\PP5261, 16L\PP5261, 16M\PP5261, 16N\PP5261, 2004\PP5261, 41C\PP5261, 41A\PP5261, 41B\PP5261, 16U\PP5261, 16\PP5261, 16A\PP5261, 2005\PP5261, 51\PP5261, 50\PP5261, 13A\PP5261, 50\PP5261, 49\PP5261, 52\PP5261, 7~A\PP2413) to the point closest to coordinate 37°51'5.66"S 148°3'48.777"E (Point CB) on the corner of parcel 7~A\PP2413.

From Point CB the boundary continues in a straight line in a north westerly direction, crossing the road reserve for Mill Point Road to the point closest to coordinate 37°51'4.399"S 148°3'47.776"E (Point CC) on the corner of parcel 152B\PP2412.

From Point CC the boundary continues in a generally northerly direction along the Crown land boundary (around parcel 152B\PP2412) to the point closest to coordinate 37°50'53.847"S 148°3'48.32"E (Point CD). The boundary continues in a straight line in a south easterly direction, crossing the road reserve for Mill Point Road to the point closest to coordinate 37°50'54.204"S 148°3'49.023"E (Point CE) on the corner of parcel 7~A\PP2413 at Toorloo Arm.

From Point CE the boundary continues along the Crown land boundary in a generally south easterly and then northerly direction (parcel 7~A\PP2413) to the point closest to coordinate 37°48'41.366"S 148°3'29.998"E (Point CF) on the corner of parcel 7~A\PP2413.

From Point CF the boundary continues in a straight northerly line, crossing the road reserve for Burnt Bridge Road, to the point closest to coordinate 37°48'39.567"S 148°3'30.518"E (Point CG) on the corner of parcel 8~B\PP2413.

From Point CG the boundary continues in a generally northerly direction (parcel 8~B\PP2413) to the point closest to 37°48'9.781"S 148°2'47.345"E (Point CH). The boundary continues in a straight line, crossing the Princes Highway at Toorloo Arm to the point closest to coordinate 37°48'8.103"S 148°2'46.612"E (Point CI) on the corner of parcel 2005\PP2413.

From Point CI the boundary continues in a northerly direction (around parcel 2005\PP2413) crossing Stony Creek to the point closest to coordinate 37°48'6.413"S 148°2'49.896"E (Point CJ) on the corner of parcel 2005\PP2413. The

boundary continues in a straight line in a southerly direction, again crossing the Princes Highway to the point closest to coordinate 37°48'8.07"S 148°2'50.454"E (Point CK) on the corner of parcel 8~B\PP2413.

From Point CK the boundary continues in a south easterly direction (parcel 8~B\PP2413) to the point closest to coordinate 37°48'38.899"S 148°3'34.735"E (Point CL) on the corner of parcel 8~B\PP2413. The boundary continues in a straight line in a southerly direction, crossing the road reserve for Burnt Bridge Road to the point closest to coordinate 37°48'40.196"S 148°3'34.803"E (Point CM) on the corner of parcel 7~A\PP2413.

From Point CM the boundary continues in a generally southerly direction, then northerly direction (parcels 7~A\PP2413, 11A~B\PP2413, 2A~D\PP3313, 2002\PP3313 and 65\PP5604) to the corner of parcel 65\PP5604 in the township of Nowa Nowa. The boundary continues along the western edge of parcels 65\PP5604, 2002\PP3313 and 4B~C\PP3592 in a north-easterly direction, crossing Boggy Creek to the corner of parcel 4B~C\PP3592. The boundary then continues in a generally southerly direction (parcels 4B~C\PP3592, 7~A\PP2413, 1D~1\PP3592) to the point closest to coordinate 37°50'42.905"S 148°6'57.822"E (Point CN), located in Lake Tyers.

The boundary continues in a southerly direction to the point closest to coordinate 37°50'44.679"S 148°6'57.571"E (Point CO) on the corner of parcel 47\PP3592. From Point CO the boundary continues along the Crown land boundary in a south easterly direction to the point closest to coordinate 37°50'52.889"S 148°7'8.666"E (Point CP). The boundary continues in a straight line to coordinate 37°50'55.485"S 148°7'12.158"E (Point CQ) located on the southern edge of parcel 49\PP3592, which is next to Bass Strait.

From Point CQ the boundary continues along the Crown land boundary in a south-westerly direction (parcels 49\PP3592, 7~A\PP2413, 52\PP5261, 62C\PP5218, A\PP2412, 85C\PP2412, 40B\PP2412, 40\PP2412, 23A\PP2184) to coordinate 37°59'52.281"S 147°42'24.041"E (Point CR), located in Ocean Grange.

The boundary continues in a straight line in a north-westerly direction to the point closest to 37°59'48.05"S 147°42'17.55"E (point CS) on the corner of parcel 23A\PP2184. From Point CS the boundary continues along the Crown land boundary in a north-westerly and then a generally south-westerly direction (parcel 23A\PP2184) to the point closest to coordinate 38°1'54.71"S 147°38'44.87"E (Point CT). The boundary continues in a south-westerly direction to 38°2'13.3"S 147°38'14.07"E (Point CU) on the edge of parcel 2012\PP2184.

From Point CU the boundary continues in a generally north-westerly direction along the Crown land boundary (parcel 2012\PP2184) to 38°1'55.21"S 147°38'4.68"E (Point CV). From Point CV the boundary continues in a straight line in a north-westerly direction to 38°1'54.22"S 147°38'3.83"E (Point CW) on the corner of parcel 23A\PP2184.

From Point CW the boundary continues along the Crown land boundary in a north westerly and then generally south westerly direction (parcels 23A\PP2184, 3M\PP3479, 2B\PP3479, 3K\PP3479) to the point closest to coordinate 38°5'24.12"S 147°32'14.87"E (Point CX). The boundary continues in a straight line in a south-westerly direction, crossing the road reserve for Track Ten to the point closest to coordinate 38°5'24.5"S 147°32'14.21"E (Point CY), located in Loch Sport.

From Point CY the boundary continues along the Crown land boundary in a generally south-westerly direction (parcels 3L\PP3479, 10C\PP3479, 3\PP3479) to the point closest to coordinate 38°7'39.86"S 147°29'44.89"E (Point CZ), located on the boundary of Loch Sport and Seacombe.

From Point CZ the boundary continues boundary in a generally south-westerly direction along the shoreline of Lake Reeve (as defined by Water Area 1:25,000 – Vicmap Hydro) to the point closest to coordinate 38°10'45.27"S 147°25'46.76"E (Point DA). The boundary continues in a south-westerly direction in a straight line to the point closest to coordinate 38°10'46.84"S 147°25'44.68"E (Point DB) on the corner of parcel 38A\PP2190.

From Point DB the boundary continues in a south-westerly direction along the Crown land boundary (parcels 38A\PP2190, 38A1\PP2190, 3B3\PP2558, 7A~C\PP2558, 2011\PP2558, 7A~C\PP2558, 7A1~C\PP2558, 8B\PP2558, 9B\PP2558, 8B\PP2558) returning to the start at Point C.

The private land within this area is excluded from the Ramsar site.

Lake King (North Arm)

The boundary commences at the point closest to coordinate 37°52'50.6"S 147°58'12.85"E (labelled as Point DC on the map) located on the corner of parcel 85B\PP2412 in Kalimna. From Point DC the boundary continues in a generally north-easterly direction along the Crown land boundary (parcel 85B\PP2412) to the point closest to coordinate 37°51'32.44"S 147°58'16.9"E (Point DD), then along the top of the west bank of the Mississippi Creek to the point closest to coordinate 37°51'20.51"S 147°58'1.94"E (Point DE), located in Kalimna West.

From Point DE the boundary continues along the Crown land boundary in a generally northerly direction along the edge of parcel 85B\PP2412 to the point closest to coordinate 37°51'5.42"S 147°58'12.15"E (Point DF) on the corner of the road reserve for Comers Road. The boundary continues in a generally northerly direction along the top of the west bank of the Mississippi Creek to the point closest to coordinate 37°50'55.38"S 147°58'3.44"E (Point DG).

From Point DG the boundary continues in an easterly direction, crossing Mississippi Creek to the point closest to coordinate 37°50'55.38"S 147°58'4.24"E (Point DH). From Point DH the boundary continues in a southerly direction along the top of the east bank of the Mississippi Creek to 37°51'16.38"S 147°58'16.18"E (Point DI).

From Point DI the boundary continues in a generally easterly and then southerly direction along the Crown land boundary (parcels 85B\PP2412, 83C\PP5447, 46C~7\PP5447) to the point closest to coordinate 37°52'30"S 147°59'27.62"E (Point DJ) on the corner of parcel 46C~7\PP5447, which is located in the township of Lakes Entrance.

The boundary continues in a south-easterly direction in a straight line to the point closest to coordinate 37°52'30.26"S 147°59'27.98"E (Point DK) on the corner of parcel 46A~7\PP5447. From Point DK the boundary continues along the Crown land boundary in a generally southerly direction (around parcel 46A~7\PP5447) to the point closest to coordinate 37°52'37.69"S 147°59'21.37"E (Point DL) near the corner of Devitt and Bulmer Streets, Lakes Entrance. The boundary continues in a straight line in a north westerly direction to the point closest to coordinate 37°52'36.29"S 147°59'20.97"E (Point DM).

From Point DM the boundary continues a generally westerly direction along the shoreline of North Arm (as defined by Water Area 1:25,000 – Vicmap Hydro) to the point closest to coordinate 37°52'38.62"S 147°59'6.15"E (Point DN).

From Point DN the boundary continues in a straight line in a southerly direction to the point closest to coordinate 37°52'39.56"S 147°59'5.99"E (Point DO) on the corner of parcel 83C\PP5447, near the corner of Rowe Street and Barkers Avenue, Lakes Entrance. From Point DO the boundary continues along the Crown land boundary in a generally south-westerly direction (parcels 83C\PP5447, 85B\PP2412) returning to the start at Point DC.

Red Morass

This part of the Ramsar site is located in Meerlieu, north of Lake Wellington and is comprised of parcels 2~6\PP2119 and 1C~19\PP2119.

MacLeod Morass

This part of the Ramsar site is located in Bairnsdale, west of the Mitchell River and is comprised of parcels 18~C\PP5027, 21~C\PP5027, 28~H\PP5027, 2011\PP5027, 23B~B\PP5027, 2A~H\PP5027, 17A~H\PP5027, 17B~H\PP5027, 22C~H\PP5027, 22B~H\PP5027 and 1E~A\PP2042.

References

DEWHA (2011). Additional guidelines for written boundary descriptions for Australian Ramsar wetlands, September 2011, Department of the Environment, Water, Heritage and the Arts. Canberra.

DEWHA (2010). Guidelines for Written Boundary Descriptions for Australian Ramsar Wetlands, Version 1, 27 August 2010. Department of the Environment, Water, Heritage and the Arts. Canberra.

DEWHA (2008). Mapping Specifications for Australian Ramsar Wetlands. Module 1 of the National Guidelines for Ramsar Wetlands – Implementing the Ramsar Convention in Australia. Department of the Environment, Water, Heritage and the Arts. Canberra.

DCNR (1995). *Victorian Ramsar Sites: Definition and Boundary Clarification Project Report*. National Parks Service, Department of Conservation and Natural Resources. Victoria.

DSE (2003). *Gippsland Lakes Ramsar Site: Strategic Management Plan*. Department of Sustainability and Environment. Victoria.

Appendix 1

List of coordinates used to define parts of the Ramsar site.

Point	Latitude	Longitude	Point	Latitude	Longitude
A	38°16' 44.45" S	147°16' 55.29" E	AV	37°59' 17.36" S	147°34' 18.28" E
B	38°16' 41.63" S	147°16' 55.88" E	AW	37°59' 18.04" S	147°34' 18.38" E
C	38°15' 13.87" S	147°19' 4.16" E	AX	37°59' 19.11" S	147°34' 26.31" E
D	38°15' 10.44" S	147°19' 6.59" E	AY	37°59' 18.47" S	147°34' 26.46" E
E	38°15' 8.65" S	147°19' 7.32" E	AZ	37°59' 19.06" S	147°34' 37.9" E
F	38°13' 47.68" S	147°21' 1.46" E	BA	37°59' 19.71" S	147°34' 37.76" E
G	38°13' 46.69" S	147°21' 3.96" E	BB	37°59' 14.76" S	147°34' 54.43" E
H	38°12' 10.99" S	147°22' 49.53" E	BC	37°59' 14.07" S	147°34' 54.6" E
I	38°12' 9.57" S	147°22' 52.41" E	BD	37°59' 10.08" S	147°35' 16.8" E
J	38°11' 37.75" S	147°23' 19.43" E	BE	37°59' 10.77" S	147°35' 16.65" E
K	38°11' 30.68" S	147°23' 24.31" E	BF	37°58' 41.76" S	147°37' 19.82" E
L	38°2' 58.65" S	147°35' 8.54" E	BG	37°58' 5.89" S	147°38' 7.28" E
M	38°2' 57.72" S	147°35' 7.18" E	BH	37°54' 29.44" S	147°43' 54.27" E
N	38°4' 29.63" S	147°26' 58.35" E	BI	37°54' 11.99" S	147°43' 54.87" E
O	38°4' 29.71" S	147°26' 36.76" E	BJ	37°54' 11.9" S	147°43' 53.63" E
P	38°7' 15.51" S	147°25' 20.94" E	BK	37°52' 56.08" S	147°41' 14.02" E
Q	38°7' 15.39" S	147°25' 20.11" E	BL	37°52' 46.9" S	147°41' 3.02" E
R	38°8' 30.69" S	147°19' 27.47" E	BM	37°52' 46.36" S	147°40' 55.38" E
S	38°8' 58.71" S	147°19' 52.82" E	BN	37°52' 48.19" S	147°40' 54.13" E
T	38°9' 24.78" S	147°19' 8.98" E	BO	37°52' 52.43" S	147°40' 48.92" E
U	38°9' 47.35" S	147°19' 28.91" E	BP	37°50' 24.42" S	147°39' 32.31" E
V	38°9' 15.98" S	147°20' 24.84" E	BQ	37°50' 25.99" S	147°39' 32.82" E
W	38°9' 17.16" S	147°21' 25.29" E	BR	37°46' 51.51" S	147°43' 39.1" E
X	38°8' 15.58" S	147°14' 4.87" E	BS	37°46' 48.94" S	147°43' 40.15" E
Y	38°9' 30.8" S	147°10' 50.67" E	BT	37°50' 3.06" S	147°46' 59.92" E
Z	38°8' 11.8" S	147°11' 50.34" E	BU	37°50' 2.43" S	147°47' 0.15" E
AA	38°8' 2.92" S	147°11' 50.31" E	BV	37°50' 3.39" S	147°47' 7.96" E
AB	38°3' 37.5" S	147°14' 30.56" E	BW	37°50' 3.94" S	147°47' 7.1" E
AC	38°3' 37.48" S	147°14' 29.74" E	BX	37°51' 12.46" S	147°47' 55.82" E
AD	38°3' 13.9" S	147°13' 57.55" E	BY	37°51' 15.41" S	147°48' 2.02" E
AE	38°3' 13.31" S	147°13' 57.22" E	BZ	37°51' 40.48" S	148°3' 46.43" E
AF	38°2' 44.13" S	147°13' 55.81" E	CA	37°51' 40.38" S	148°3' 47.25" E
AG	38°2' 43.36" S	147°13' 53.29" E	CB	37°51' 5.66" S	148°3' 48.78" E

Point	Latitude	Longitude	Point	Latitude	Longitude
AH	38°2' 23.33" S	147°13' 41.58" E	CC	37°51' 4.4" S	148°3' 47.78" E
AI	38°2' 22.68" S	147°13' 41.66" E	CD	37°50' 53.85" S	148°3' 48.32" E
AJ	38°2' 16.25" S	147°13' 44.13" E	CE	37°50' 54.2" S	148°3' 49.02" E
AK	38°1' 27.75" S	147°13' 43.98" E	CF	37°48' 41.37" S	148°3' 30" E
AL	38°1' 57.78" S	147°16' 31.59" E	CG	37°48' 39.57" S	148°3' 30.52" E
AM	38°1' 57.9" S	147°16' 32.4" E	CH	37°48' 9.78" S	148°2' 47.35" E
AN	38°4' 1.75" S	147°26' 41.49" E	CI	37°48' 8.1" S	148°2' 46.61" E
AO	38°4' 1.25" S	147°26' 42.11" E	CJ	37°48' 6.41" S	148°2' 49.9" E
AP	38°1' 27.64" S	147°29' 9.84" E	CK	37°48' 8.07" S	148°2' 50.45" E
AQ	38°1' 27.68" S	147°29' 10.66" E	CL	37°48' 38.9" S	148°3' 34.74" E
AR	37°59' 48.23" S	147°33' 15.42" E	CM	37°48' 40.2" S	148°3' 34.8" E
AS	37°59' 47.96" S	147°33' 16.33" E	CN	37°50' 42.9" S	148°6' 57.82" E
AT	37°59' 29.41" S	147°33' 21" E	CO	37°50' 44.68" S	148°6' 57.57" E
AU	37°59' 28.68" S	147°33' 20.66" E	CP	37°50' 52.89" S	148°7' 8.67" E
CQ	37°50' 55.49" S	148°7' 12.16" E	DD	37°51' 32.44" S	147°58' 16.9" E
CR	37°59' 52.28" S	147°42' 24.04" E	DE	37°51' 20.51" S	147°58' 1.94" E
CS	37°59' 48.05" S	147°42' 17.55" E	DF	37°51' 5.42" S	147°58' 12.15" E
CT	38°1' 54.71" S	147°38' 44.87" E	DG	37°50' 55.38" S	147°58' 3.44" E
CU	38°2' 13.3" S	147°38' 14.07" E	DH	37°50' 55.38" S	147°58' 4.24" E
CV	38°1' 55.21" S	147°38' 4.68" E	DI	37°51' 16.38" S	147°58' 16.18" E
CW	38°1' 54.22" S	147°38' 3.83" E	DJ	37°52' 30" S	147°59' 27.62" E
CX	38°5' 24.12" S	147°32' 14.87" E	DK	37°52' 30.26" S	147°59' 27.98" E
CY	38°5' 24.5" S	147°32' 14.21" E	DL	37°52' 37.69" S	147°59' 21.37" E
CZ	38°7' 39.86" S	147°29' 44.89" E	DM	37°52' 36.29" S	147°59' 20.97" E
DA	38°10' 45.27" S	147°25' 46.76" E	DN	37°52' 38.62" S	147°59' 6.15" E
DB	38°10' 46.84" S	147°25' 44.68" E	DO	37°52' 39.56" S	147°59' 5.99" E
DC	37°52' 50.6" S	147°58' 12.85" E			

Appendix 2

Site hectares.

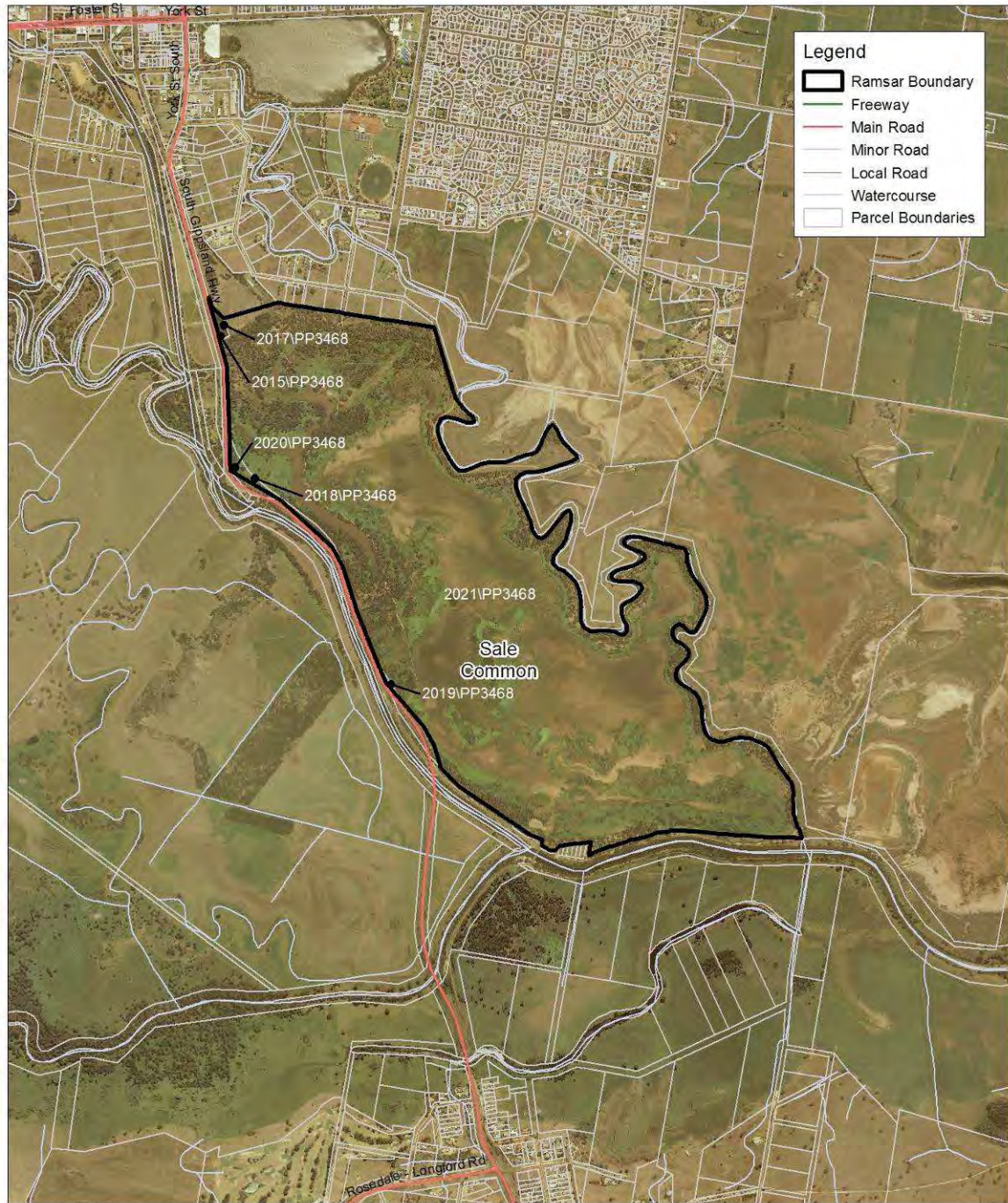
Lake Name	Hectares
Gippsland Lakes – Lake Coleman, Lake Wellington, Lake Victoria, Lake King and Lake Tyers	58285.80
Lake King (North Arm)	187.01
Lake Reeve	1578.42
Macleod Morass	496.39
Red Morass	294.60
Sale Common	308.57
Total	61150.79

Appendix 3

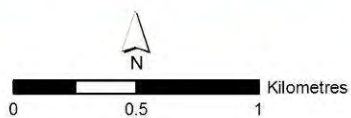
Maps

Map number	Description
1.	Overview map.
2.	Sale Common.
3.	Lake Reeve, Points A to B.
4.	Lake Reeve, Points C to K and Points DA to DB.
5.	Lake Reeve, Points M to L and Points CX to CZ.
6.	Lake Victoria, Points BD to BG and Lake Reeve, Points CR to CU.
7.	McLennan Strait, Points N to Q, Lake Victoria, Points AN to AQ and Lake Reeve, Point CZ.
8.	Lake Reeve, Points H to K and Lake Coleman, Points R to W.
9.	Lake Wellington and La Trobe River, Points X to Z and Points AA to AG.
10.	Lake Wellington, Points AB to AM.
11.	Lake Victoria, Points AR to AZ and Points BB to BD.
12.	Lake King and the Mitchell River, Points BH to BQ and Macleod Morass.
13.	Nicholson River and Lake King, Points BR to BY.
14.	Lake Tyers, Points BZ to CQ.
15.	Lake King (North Arm), Points DC to DO.
16.	Red Morass and Points AP to AQ.

Map 2 Gippsland Lakes Ramsar Site



Map produced May 2013
Datum: GDA94
Projection: MGA Zone 55
Copyright © The State of Victoria,
Department of Environment and Primary Industries



Department of
Environment and
Primary Industries



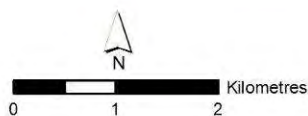
Map 3 Gippsland Lakes Ramsar Site



Map 4 Gippsland Lakes Ramsar Site



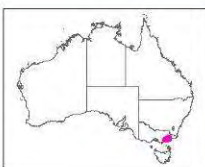
Map produced June 2013
Datum: GDA94
Projection: MGA Zone 55
Copyright © The State of Victoria,
Department of Environment and Primary Industries



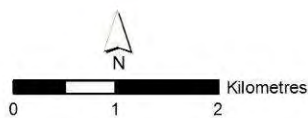
Department of
Environment and
Primary Industries



Map 5 Gippsland Lakes Ramsar Site



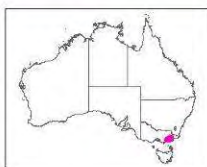
Map produced June 2013
 Datum: GDA94
 Projection: MGA Zone 55
 Copyright © The State of Victoria,
 Department of Environment and Primary Industries



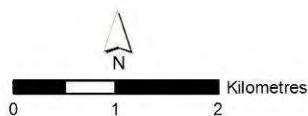
Department of
 Environment and
 Primary Industries



Map 6 Gippsland Lakes Ramsar Site



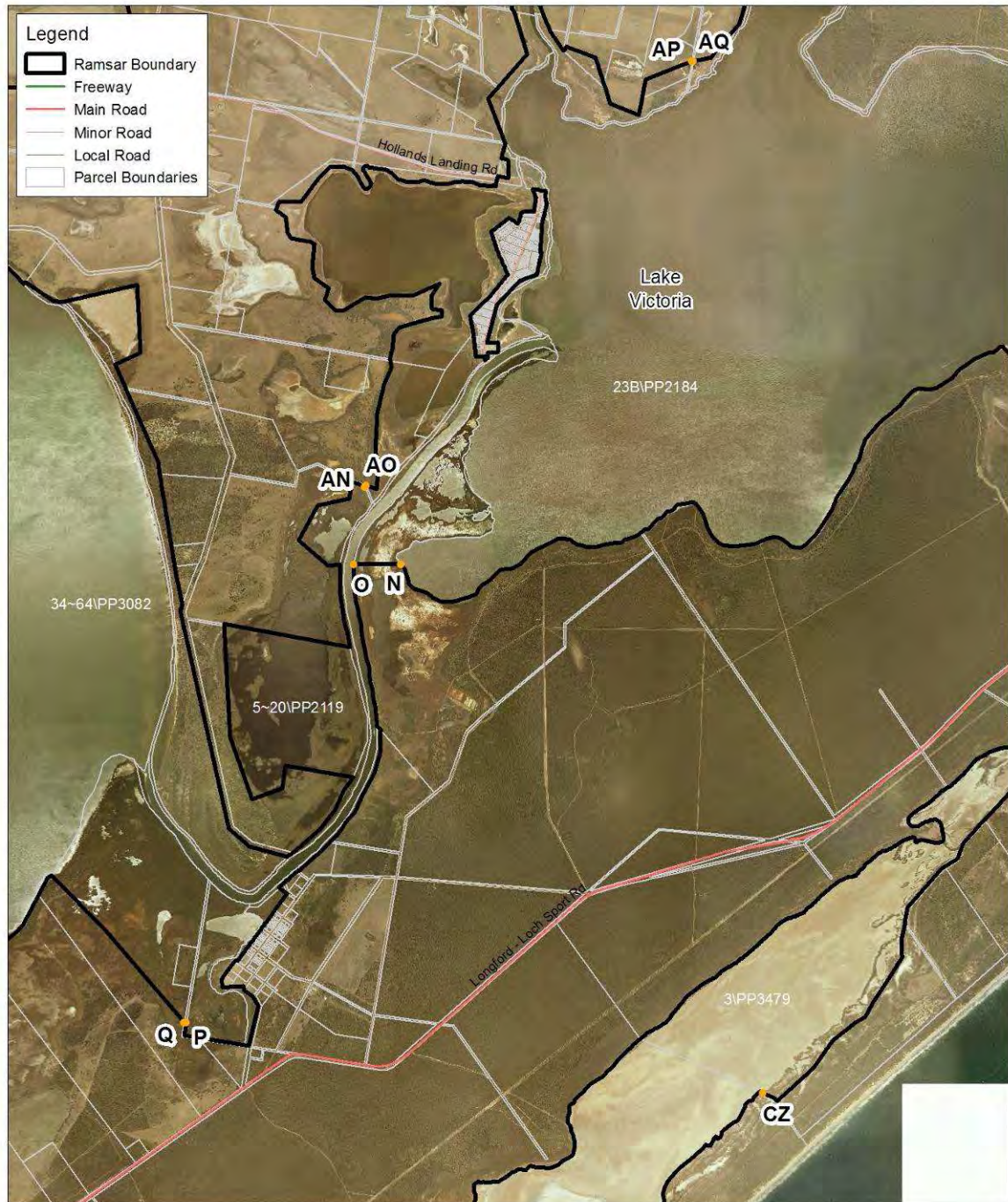
Map produced June 2013
Datum: GDA94
Projection: MGA Zone 55
Copyright © The State of Victoria,
Department of Environment and Primary Industries



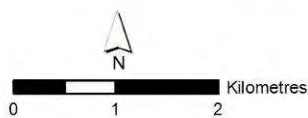
Department of
Environment and
Primary Industries



Map 7 Gippsland Lakes Ramsar Site



Map produced June 2013
 Datum: GDA94
 Projection: MGA Zone 55
 Copyright © The State of Victoria,
 Department of Environment and Primary Industries

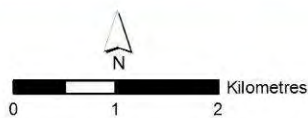


Department of
 Environment and
 Primary Industries
 State Government
 Victoria

Map 8 Gippsland Lakes Ramsar Site



Map produced June 2013
 Datum: GDA94
 Projection: MGA Zone 55
 Copyright © The State of Victoria,
 Department of Environment and Primary Industries



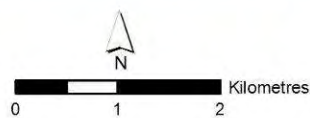
Department of
 Environment and
 Primary Industries



Map 9 Gippsland Lakes Ramsar Site



Map produced June 2013
 Datum: GDA94
 Projection: MGA Zone 55
 Copyright © The State of Victoria,
 Department of Environment and Primary Industries



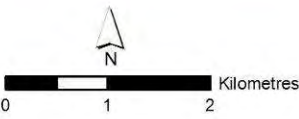
Department of
 Environment and
 Primary Industries



Map 10 Gippsland Lakes Ramsar Site



Map produced June 2013
Datum: GDA94
Projection: MGA Zone 55
Copyright © The State of Victoria,
Department of Environment and Primary Industries



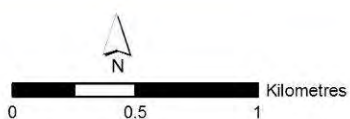
Department of
Environment and
Primary Industries



Map 11 Gippsland Lakes Ramsar Site



Map produced June 2013
 Datum: GDA94
 Projection: MGA Zone 55
 Copyright © The State of Victoria,
 Department of Environment and Primary Industries



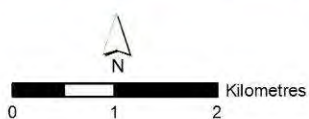
Department of
 Environment and
 Primary Industries



Map 12 Gippsland Lakes Ramsar Site



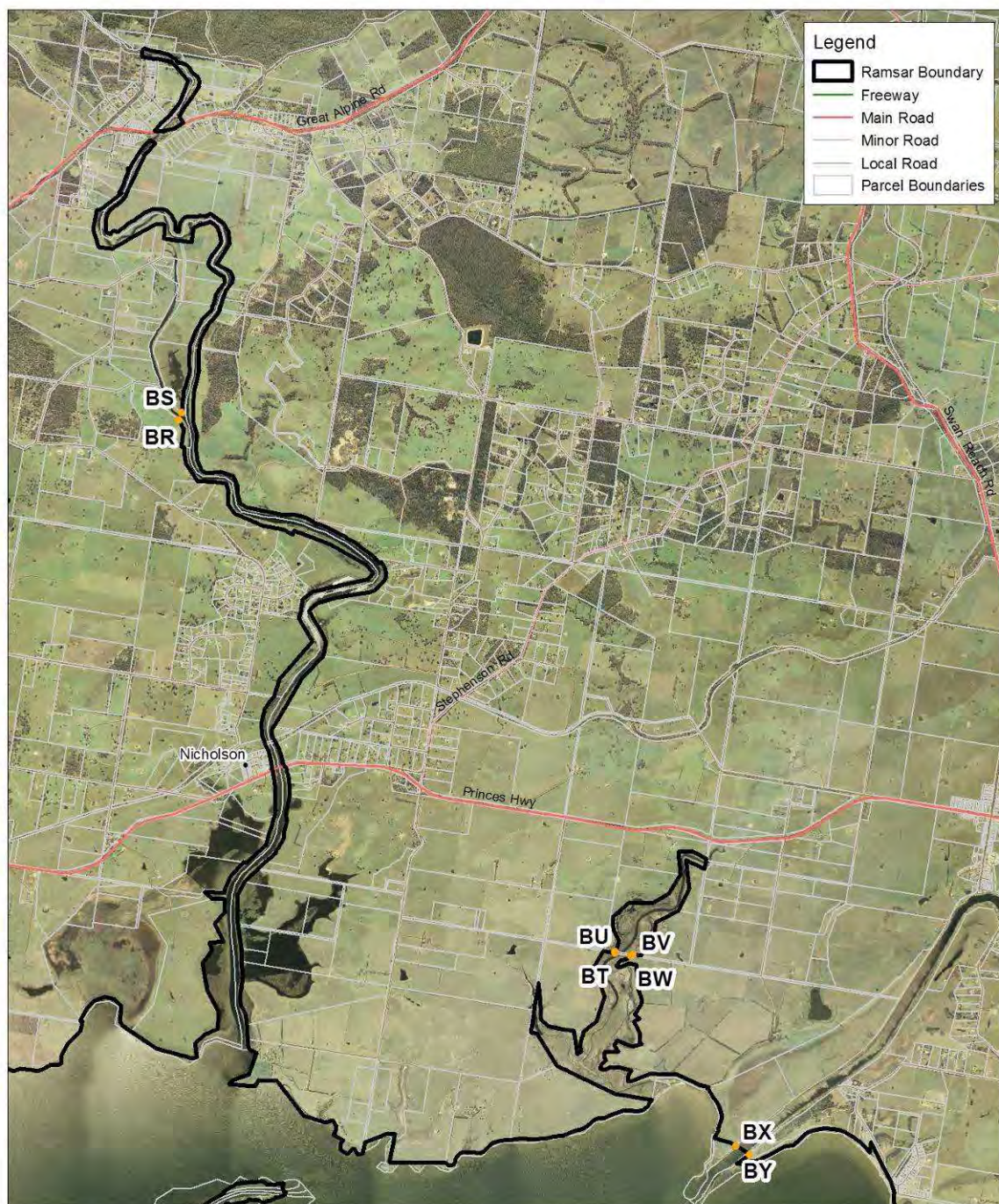
Map produced June 2013
 Datum: GDA94
 Projection: MGA Zone 55
 Copyright © The State of Victoria,
 Department of Environment and Primary Industries



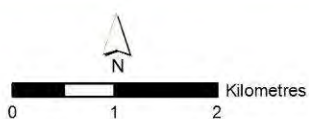
Department of
 Environment and
 Primary Industries



Map 13 Gippsland Lakes Ramsar Site



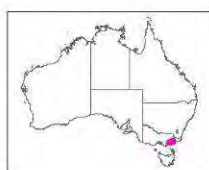
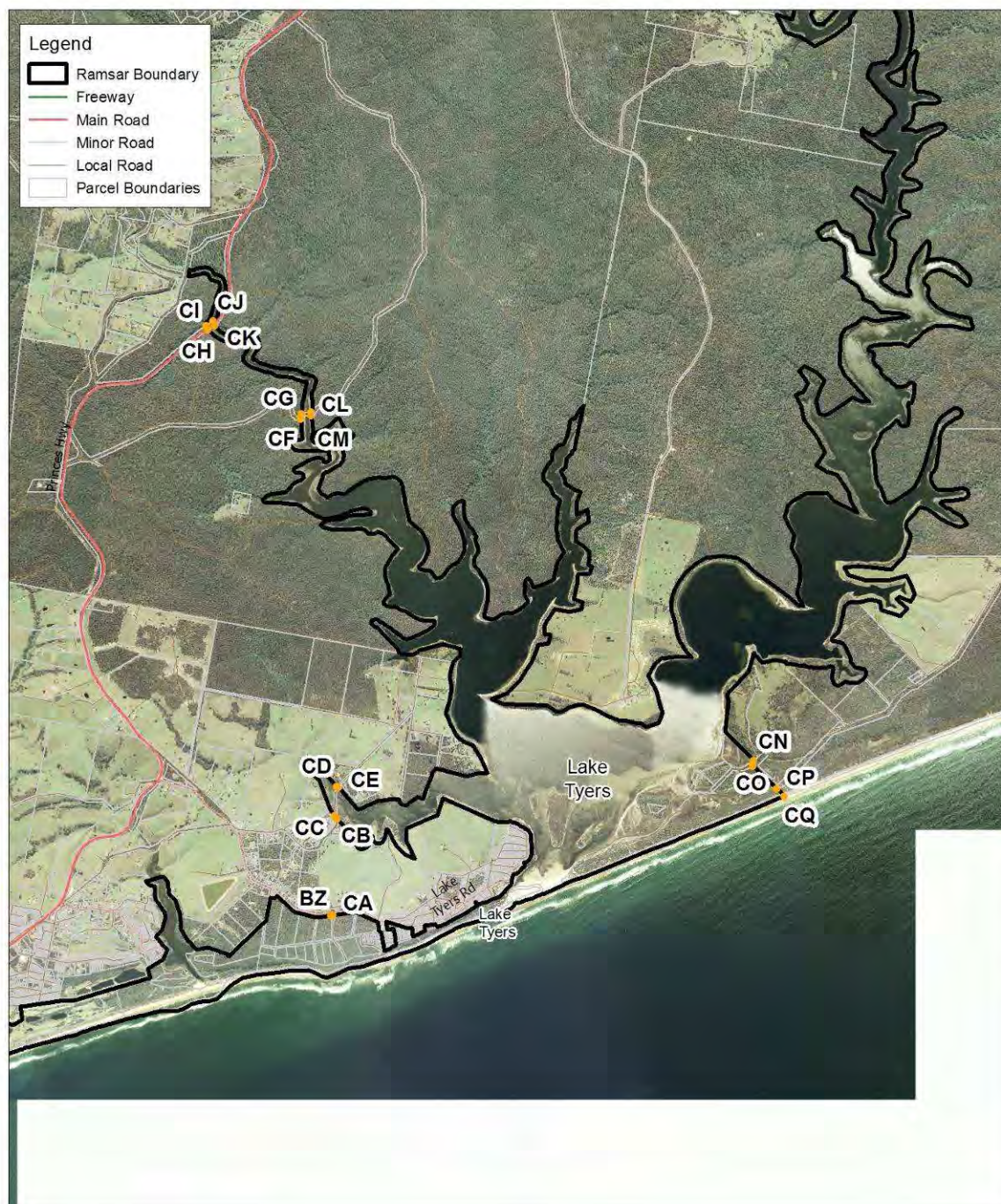
Map produced June 2013
 Datum: GDA94
 Projection: MGA Zone 55
 Copyright © The State of Victoria,
 Department of Environment and Primary Industries



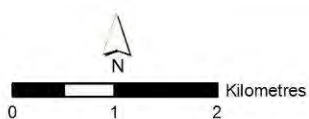
Department of
 Environment and
 Primary Industries



Map 14 Gippsland Lakes Ramsar Site



Map produced June 2013
 Datum: GDA94
 Projection: MGA Zone 55
 Copyright © The State of Victoria,
 Department of Environment and Primary Industries



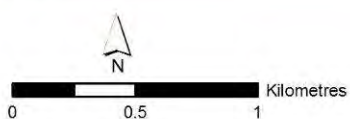
Department of
 Environment and
 Primary Industries

State Government
Victoria

Map 15 Gippsland Lakes Ramsar Site



Map produced June 2013
 Datum: GDA94
 Projection: MGA Zone 55
 Copyright © The State of Victoria,
 Department of Environment and Primary Industries



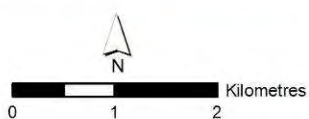
Department of
 Environment and
 Primary Industries



Map 16 Gippsland Lakes Ramsar Site



Map produced June 2013
 Datum: GDA94
 Projection: MGA Zone 55
 Copyright © The State of Victoria,
 Department of Environment and Primary Industries



Department of
 Environment and
 Primary Industries



Customer Service Centre **136 186**

www.depi.vic.gov.au