

Corner Inlet Ramsar Site Boundary Description

Technical Report



Published by the Victorian Government Department of Environment and Primary Industries Melbourne,
December 2013

© The State of Victoria Department of Environment and Primary Industries Melbourne 2013

This publication is copyright. No part may be reproduced by any process except in accordance with the provisions of the *Copyright Act 1968*.

Authorised by the Victorian Government, 8 Nicholson Street, East Melbourne.

ISBN 978-1-74287-860-7 (online)

For more information contact the DEPI Customer Service Centre 136 186

Citation: DEPI (2013) Corner Inlet Ramsar Site Boundary Description Technical Report. Department of Environment and Primary Industries, East Melbourne, Victoria.

Disclaimer

This publication may be of assistance to you but the State of Victoria and its employees do not guarantee that the publication is without flaw of any kind or is wholly appropriate for your particular purposes and therefore disclaims all liability for any error, loss or other consequence which may arise from you relying on any information in this publication.

Accessibility

If you would like to receive this publication in an accessible format, such as large print or audio, please telephone 136 186, or email customer.service@depi.vic.gov.au

Deaf, hearing impaired or speech impaired? Call us via the National Relay Service on 133 677 or visit www.relayservice.com.au

This document is also available in PDF format on the internet at www.depi.vic.gov.au

Cover photo: Yvette Baker (October 2008).

Contents

Introduction	1
Methodology of RAMSAR GIS Layer boundary realignment	2
Location	3
Written description of the Corner Inlet Ramsar Site	4
References	8
Appendix 1	9
Appendix 2	10
Appendix 3	11

Introduction

Ramsar wetlands are wetlands of international importance listed under the Convention on Wetlands (Ramsar, Iran 1971). Victoria has 11 wetlands listed under this convention including the Corner Inlet Ramsar Site.

It is a requirement of the Convention on Wetlands that a suitable map or maps are provided for each Ramsar wetland. The Department of Sustainability, Environment, Water, Population and Communities (SEWPAC), requires that both the written description and the spatial data of the Ramsar site boundaries are accurate. This information is used to gazette the boundary of the declared Ramsar wetland in accordance with Section 327 of the Environment Protection and Biodiversity Conservation Act 1999 (EPBC Act). Under the EPBC Act there are requirements for approval of activities which have, or are likely to have a significant impact on the ecological character of a declared Ramsar wetland. Precise identification of site boundaries helps to ensure that the exact boundaries of the Ramsar site can be easily identified, which can facilitate compliance with the EPBC Act as well as its effective enforcement.

The RAMSAR100 spatial dataset is a polygon layer that identifies each Victorian Ramsar area individually. RAMSAR100 was produced in conjunction with a report describing each Ramsar site (DCNR 1995). The Department of Environment and Primary Industries (DEPI) is the custodian of RAMSAR100. Most of the line work in RAMSAR100 was initially derived from 1:100,000 reference data. Because of its broader scale, this data was not always consistent with the cadastre and other more accurate features that have now been used to better define the majority of the Corner Inlet Ramsar Site. The updated spatial definition of Corner Inlet Ramsar Site is identified in a new RAMSAR25 spatial dataset.

This report details the written description of the Corner Inlet Ramsar Site to explicitly define the Ramsar boundaries, along with accompanying maps.

Methodology of RAMSAR GIS Layer boundary realignment

An expert panel was convened to provide advice on the original intent of the Ramsar site boundaries based on the description in DCNR (1995) and the RAMSAR100 spatial dataset.

Certificates of Title were obtained as required from the Office of the Surveyor-General, Victoria, to further clarify the intent of the Ramsar boundary.

DEPI manages the RAMSAR 100 spatial dataset. The current RAMSAR100 boundary of the Ramsar area was used as a guide to select appropriate features from the following 1:25,000 datasets:

- Public Land Management (PLM25) (15 June 2011)
- Road Network 1:25,000 - Vicmap Transport – Road (19 June 2012)
- Vicmap Property 1:25,000 (13 March 2013)
- Watercourse Network 1:25,000 – Vicmap Hydro (19 June 2012).

These datasets are represented in spatial products available through Vicmap¹ - <http://www.land.vic.gov.au>. Alternatively the Ramsar site boundaries can be viewed through the DEPI website, at Interactive Maps - <http://www.depi.vic.gov.au/about-depi/interactive-maps>.

High quality digital aerial photography was used where it was necessary to further clarify the original intent of the Ramsar boundary. The following image held by Land Victoria, DEPI was used:

- landcover55-sth_2009dec14_air_vis_50cm_mga55.ecw.

The geographical coordinates (latitude, longitude) used in this report are based on Geographic Datum of Australia 1994 (GDA94). The hectares of the site presented in the body of the report have been calculated using Albers Equal Area projection and rounded to the nearest whole number (see Appendix 1 for the site's area calculated to two decimal places).

¹ Terms and conditions do apply.

Location

The Corner Inlet Ramsar Site is located 160 kilometres south-east of Melbourne. It is the most southerly marine embayment and tidal mudflat system of mainland Australia covering an area of 67,193 ha.

This site includes all of Corner Inlet Marine and Coastal Park and most of Nooramunga Marine and Coastal Park, as well as the area in between these two reserves. The site includes private land on Sunday Island, Dog Island, Little Dog Island and Bullock Island.

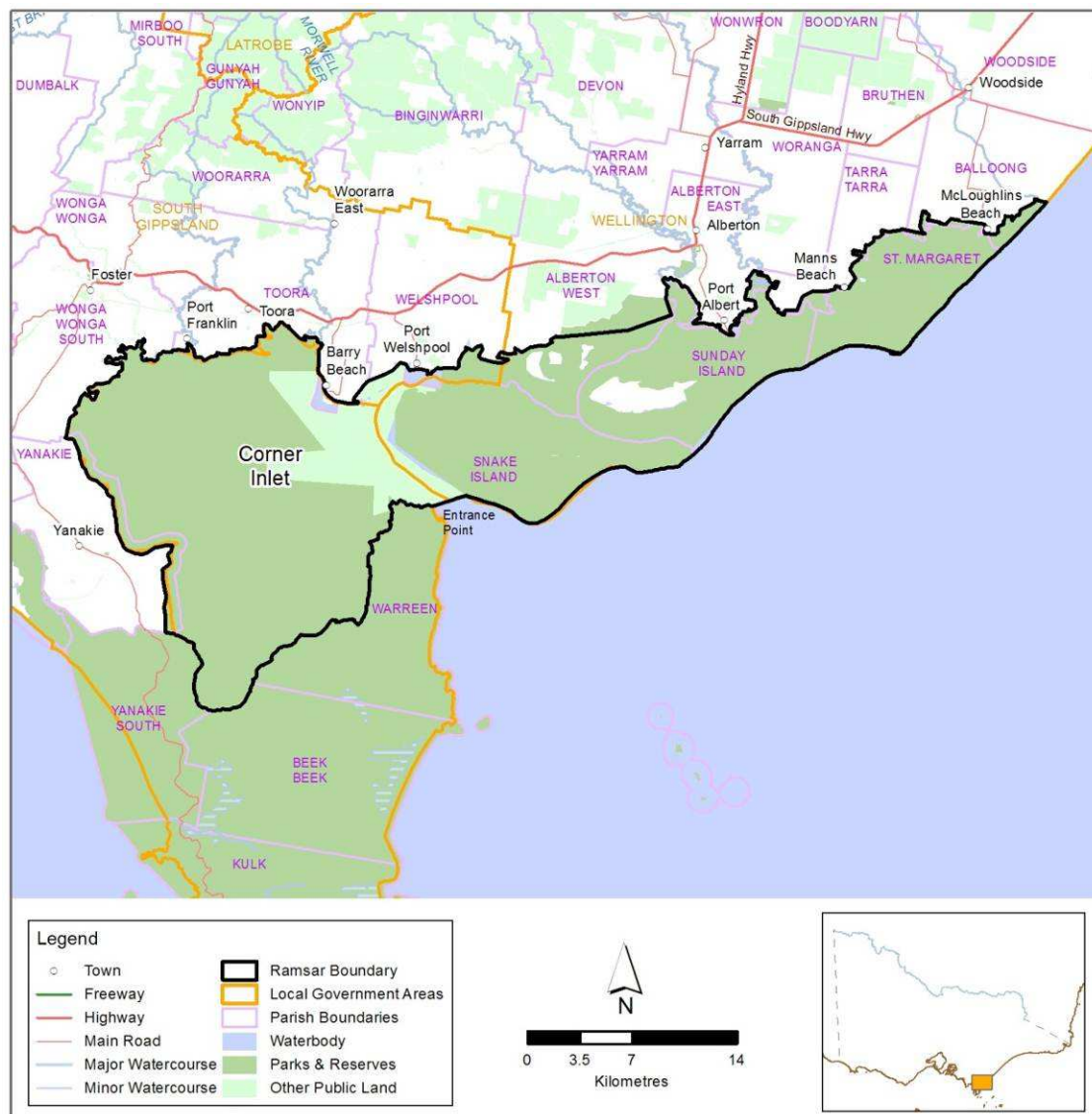


Figure 1: Corner Inlet Ramsar site location.

Written description of the Corner Inlet Ramsar Site

The generated boundary of the Ramsar site described below is represented by the spatial data in RAMSAR25 held in the DEPI Corporate Spatial Data Library. The datum used is Geographic Datum of Australia 1994(GDA94). Points referred to in the description are shown on the maps in Appendix 3.

The boundary commences at the north eastern corner of Nooramunga Marine and Coastal Park at the point closest to 38°35' 30.84" S 146°56' 11.01" E (labelled as Point A on the map, refer to Appendix 2 for a list of all coordinates and Appendix 3 for the maps) on the north east corner of parcel 2005\PP2050. The boundary continues in a south-westerly direction along the edge of Nooramunga Marine and Coastal Park (parcels 2005\PP2050, 5A\PP3467, 2002\PP3467, 2~B\PP3467, 2003\PP3467, 6A\PP3511 and 1\PP3492) to the point closest to 38°38' 45.54" S 146°52' 8.1" E (Point B).

From Point B the boundary continues in a south westerly direction along the edge of Nooramunga Marine and Coastal Park (along the mean high water mark (MHWM)) to the point closest to 38°40' 47.27" S 146°49' 57.63" E (Point C). From Point C the boundary continues in a straight line to the point closest to 38°41' 5.12" S 146°49' 34.08" E (Point D) on the southern edge of parcel 2003\PP3467. The boundary continues in a westerly direction along this parcel's southern edge to the point closest to 38°41' 29.03" S 146°45' 31.16" E (Point E) on the eastern corner of parcel 2~B\PP3467. The boundary continues in a generally westerly direction along the southern edge of parcel 2~B\PP3467 to the point closest to 38°41' 36.35" S 146°45' 14.25" E (Point F) on the south-west corner of this parcel.

From Point F the boundary continues in a generally south-westerly direction along the southern edges of parcels 6A\PP3511 and 1\PP3492 to the point closest to 38°45' 21.75" S 146°36' 49.46" E (Point G) on the southern edge of parcel 1\PP3492, near Lighthouse Point on Snake Island. From Point G the boundary continues in a south-westerly direction following the Crown land boundary (Nooramunga Marine and Coastal Park) to the point closest to 38°46' 29.04" S 146°29' 40.59" E (Point H) at Bentley Point.

From Point H the boundary continues as a straight line to the point closest to 38°46' 53.81" S 146°28' 6.41" E (Point I) at Entrance Point on Wilsons Promontory. From Point I the boundary continues in a generally westerly and then south-westerly direction to follow the northern edge of parcels 1\PP3758, 1\PP2100 and 1\PP3946 to the point closest to 38°51' 35.16" S 146°15' 52.66" E (Point J) on the south-east corner of parcel 3\LP90919.

From Point J the boundary continues in a northerly direction along the eastern edge of parcels 25A\PP3945 and 22C~B\PP3863 passing Duck Point to the point closest to 38°41' 14.74" S 146°13' 39.82" E (Point K) on the northern edge of parcel 4\PS529636. The boundary continues in a straight line crossing Stockyard Creek to the point closest to 38°41' 13.71" S 146°13' 42.86" E (Point L) on the south-west corner of parcel 2\LP145702.

The boundary then continues in an easterly direction along the southern edge of parcels 2\LP145702 and 2\LP138658. At the eastern corner of parcel 2\LP138658 the boundary crosses Bennison Creek in a straight line to the north-west corner of parcel 8K~A\PP3863. The boundary then continues in a southerly direction to follow the eastern edge of parcel 22C~B\PP3863. At the south-east corner of parcel 1\TP617508 the boundary continues in a generally westerly direction along the northern edge of parcels 8N~A\PP3863, 22C~A\PP3863, 8P~A\PP3863, 19~E\PP3630 and 19A~E\PP3630 to the point closest to 38°41' 9.14" S 146°16' 48.31" E (Point M) on the north-east corner of parcel 19A~E\PP3630, near the township of Port Franklin.

From Point M the boundary crosses the Franklin River in a straight line to the point closest to 38°41' 14.52" S 146°16' 55.1" E (Point N) on the western corner of parcel 1\TP876203. From Point N the boundary continues in a generally westerly direction along the northern (inland) edge of parcels 13~5\PP5650, 23C~A\PP3630 and 32A\PP3630 to the point closest to coordinate 38°41' 28.74" S 146°18' 39.72" E (Point O).

From Point O the boundary continues in a straight northerly line to the point closest to 38°41' 27.81" S 146°18' 39.9" E (Point P) on the south-east corner of parcel 32\PP3630. The boundary then follows the eastern, northern and western edges of this parcel to the point closest to 38°41' 21.85" S 146°18' 49.61" E (Point Q) on the south-west corner of parcel 32\PP3630. From Point Q the boundary continues in a straight southerly line to the point closest to 38°41' 22.82" S 146°18' 49.44" E (Point R), on the northern edge of parcel 32A\PP3630.

From Point R the boundary continues in a generally easterly direction to follow the northern edge of parcels 32A\PP3630, 139A\PP3630, 3H~C\PP3630, 2001\PP3630 and 2002\PP3630, crossing the Agnes River. The boundary then continues in a generally south-westerly direction following the northern and eastern edges of parcel 45D~C\PP3630. It continues to follow the eastern edge of parcels 45F~C\PP3630 and 45B~C\PP3630 until it reaches the point closest to 38° 42' 30.11" S 146° 23' 3.17" E (Point S).

From Point S (excluding the port infrastructure at Barry Beach) the boundary continues in a straight westerly line to the point closest to 38° 42' 30.12" S 146° 23' 1.72" E (Point T), on the western edge of parcel 45B~C\PP3630. The boundary continues to follow the Crown land boundary in a southerly direction to the point closest to 38° 42' 44.1" S 146° 23' 2.42" E (Point U). From Point U the boundary continues in a straight easterly line until it intersects with the western edge of parcel 2\PS501722 at the point closest to 38° 42' 44.08" S 146° 23' 3.95" E (Point V).

From Point V the boundary continues in a south-easterly direction to follow the southern edge of parcel 1\PS501722 until it reaches this parcel's south-east corner. The boundary then continues in a northerly direction until it reaches the north-east corner of parcel 44B~C\PP3630 where it meets the eastern edge of parcel 1\PS501722. The boundary then continues in a generally north-easterly direction to follow the northern edge of parcels 44B~C\PP3630 and 44B~A\PP3630 until it reaches the south-east corner of parcel 44B~A\PP3630 adjacent to the township of Port Welshpool.

The boundary continues in an easterly direction to follow the southern edge of parcel 1D\PP5652 until it meets the south-west corner of parcel 1E\PP5652. The boundary then continues in a northerly then westerly direction to follow the western and northern edges of parcel 1E\PP5652 until it meets the north-east corner of parcel 35G~B\PP3790. The boundary follows the eastern, southern and western edges of this parcel until it meets the south-east corner of parcel 1G\PP5662. The boundary then follows the eastern and northern edges of parcel 1G\PP5652 until it meets to the point closest to 38° 42' 1.35" S 146° 28' 2.27" E (Point W), on the northern edge of parcel 1G\PP5652.

From Point W the boundary continues in a generally north-easterly direction to the point closest to the point closest to 38° 42' 0.61" S 146° 28' 4.29" E (Point X) on the northern edge of parcel 12~20\PP5652. The boundary continues in a north-easterly direction until it reaches the point closest to 38° 41' 57.93" S 146° 28' 7.6" E (Point Y) on the south-east corner of 1\TP683246.

From Point Y the boundary continues in a generally north-easterly direction following the MHWM where it is located within parcel 12~20\PP5652, the adjacent road reserve and parcel 48\PP5652, until it meets the point closest to 38° 41' 55.15" S 146° 28' 21.38" E (Point Z) on the northern edge of parcel 49\PP5652.

From Point Z the boundary continues along the northern edge of parcels 34A~B\PP3790, 33B~A\PP2008 (which form a part of the Nooramunga Marine and Coastal Park) until it reaches the point closest to coordinate 38° 40' 42.31" S 146° 33' 53.15" E (Point AA) in Hedley. From Point AA the boundary continues in a straight line in an easterly direction to the point closest to 38° 40' 25.31" S 146° 37' 0.82" E (Point AB) and then to the point closest to 38° 39' 50 .58" S 146° 38' 59.73" E (Point AC).

From Point AC the boundary continues in a straight line in a northerly direction to the point closest to 38° 39' 13.32" S 146° 38' 43.05" E (Point AD) at the south-east corner of parcel 33A~A\PP2008. Continuing in a northerly direction the boundary follows the eastern edge of parcels 33A~A\PP2008, 7B\PP2008 and 7A\PP2008 until it meets the point closest to 38° 38' 34.24" S 146° 38' 33.48" E (Point AE) at the north-east corner of parcel 7A\PP2008. From Point AE the boundary continues in a straight line in a north-easterly direction, crossing the Albert River to the point closest to 38° 38' 29.12" S 146° 38' 40.05" E (Point AF) on the southern edge of parcel 2\PS315530.

From Point AF the boundary continues along the eastern edge of parcels 50C\PP2007 to the point closest to 38° 39' 22.19" S 146° 40' 8.84" E (Point AG) on the south-east corner of parcel 50C\PP2007. From Point AG the boundary continues in a straight line in a southerly direction to the point closest to 38° 39' 22.64" S 146° 40' 8.77" E (Point AH) on the northern edge of parcel 140A1\PP2007. The boundary continues along the northern edge of this parcel to its north-east corner. The boundary then continues in a generally southerly direction along the eastern edge of parcels 140A1\PP2007, 140C1\PP2007 and 140A\PP2007. At the south-east corner of parcel 140A\PP2007 the boundary continues in a westerly direction along the southern edge of this parcel to the point closest to 38° 39' 46.32" S 146° 40' 14.56" E (Point AI).

From Point AI the boundary continues in a straight line across the road reserve for the Old Port Foreshore Road, Port Albert to the point closest to 38° 39' 47.34" S 146° 40' 14.72" E (Point AJ) on the northern edge of parcel 127B~A\PP2007. From Point AJ the boundary continues in an easterly direction to the north-east corner of parcel 138A\PP2007. It then continues in a southerly and then westerly direction to follow the eastern and southern edges of

parcel 138A\PP2007 to the point closest to 38°39' 56.93" S 146°40' 12.49" E (Point AK), on the south-west corner 138A\PP2007. From Point AK the boundary continues in a southerly then easterly direction to follow the eastern and northern edges of parcel 127B~A\PP2007 to the south-west corner of parcel 127A\PP2007.

The boundary then follows the western, northern and eastern edges of parcel 127A\PP2007 to this parcel's south-east corner where it continues to follow the northern edge of parcel 127B~A\PP2007 to its eastern corner. The boundary then continues in a straight line in a generally north-easterly direction to the point closest to 38°40' 30.62" S 146°41' 47.55" E (Point AL), located next to North Street, Port Albert.

From Point AL the boundary continues in a generally south-easterly direction to the point closest to 38°40' 31.53" S 146°41' 50.57" E (Point AM). From Point AM the boundary continues in a generally north-easterly direction to the point closest to 38°40' 30.72" S 146°41' 52.12" E (Point AN). From Point AN the boundary continues in a generally north-westerly direction to the point closest to 38°40' 29.29" S 146°41' 50.39" E (Point AO). From Point AO the boundary continues in a generally south-westerly direction to the point closest to 38°40' 29.5" S 146°41' 50.19" E (Point AP). From Point AP the boundary continues in a generally north-westerly direction to the point closest to 38°40' 29.08" S 146°41' 49.4" E (Point AQ), on the southern corner of parcel 2\TP14621 (located next to Wharf Street, Port Albert).

From Point AQ the boundary continues in a generally north-westerly direction on the southern and eastern edges of parcel 2\TP14621 and the western edge of parcel 4A~A\PP2007 until it reaches the southern corner of parcel 4~A\PP2007. The boundary then continues in a north-westerly direction along the western edge of parcel 4~A\PP2007 until it reaches the south-west corner of parcel CP162000.

The boundary then continues in a generally north-easterly direction along the northern edge of parcel 4~A\PP2007 and then the western edge of parcel 4A~A\PP2007 until it reaches the south-east corner of parcel 12~1\PP5646, located within the Port Albert township. The boundary then continues around parcel 12~1\PP5646, along its southern, western and northern edges to the point closest to 38°39' 54.94" S 146°42' 7.19" E (Point AR) on the northern edge of parcel 12~1\PP5646.

From AR the boundary continues in a straight line in a northerly direction to the point closest to 38°39' 54.3" S 146°42' 7.34" E (Point AS) on the south-west corner of parcel 14~18\PP5656. The boundary continues in a northerly direction along the western edge and northern edges of parcel 14~18\PP5646 to the point closest to 38°39' 47.19" S 146°42' 13.76" E (Point AT) on the north-east corner of parcel 14~18\PP5646. The boundary continues in a straight line in an easterly direction to the point closest to 38°39' 47.3" S 146°42' 14.6" E (Point AU) on the western edge of parcel 82\PP2007. The boundary continues in a generally northerly direction along the western and northern edges of parcel 82\PP2007 to the point closest to 38°39' 40.94" S 146°42' 21.74" E (Point AV).

From Point AV the boundary continues in a straight line in a northerly direction to the point closest to 38°39' 40.29" S 146°42' 21.86" E (Point AW) on the south-west corner of parcel 84A\PP2007. From Point AW the boundary continues in a generally northerly direction along the western edges of parcels 84A\PP2007 and parcel 6A\PP3511, the southern and eastern edges of parcel 86A\PP2007 and the western and northern edges of parcel 86\PP2007 to the point closest to 38°38' 11.62" S 146°42' 51.91" E (Point AX), on the north-east corner of parcel 86\PP2007. From Point AX the boundary continues in a straight line in a generally easterly direction, crossing the Tarra River to the point closest to 38°38' 12.76" S 146°42' 56.56" E (Point AY) on the north-east corner of parcel 4B~\PP5767, which is located within the Tarraville township.

From Point AY the boundary continues along the Crown land boundary in an easterly then generally south easterly direction, along the edge of parcels 4B~9\PP5767, 4A~9\PP5767, 1~8\PP5767, 4A~9\PP5767, 2001\PP3557, 6A\PP3511, 48A\PP3557, 9F\PP3557, 9C\PP3557, 9G\PP3557, 2003\PP3557, 2~B\PP3467, 2004\PP3557, 20G\PP3557, to the point closest to 38°37' 26.7" S 146°47' 50.08" E (Point AZ), on the northern edge of parcel 20G\PP3557, located within Tarraville.

From Point AZ the boundary continues in a straight line in a generally northerly direction to the point closest to 38°37' 26.06" S 146°47' 50.24" E (Point BA) on the south-east corner of parcel 19\PP3557, located in Hunterston. From Point BA the boundary continues along the Crown land boundary (Nooramunga Marine and Coastal Park) in a generally north easterly direction along the edge of parcels 20H\PP3557, 2~B\PP3467, 2002\PP3557, 52E\PP2050, 2~B\PP3467, 53C\PP2050, 2003\PP2050, 53B\PP2050, 2003\PP2050, 2004\PP2050, 52C\PP2050 to the point closest to 38°36' 2.66" S 146°54' 18.75" E (Point BB), located in McLooghlin Beach.

From Point BB the boundary continues in a straight line in a generally south easterly direction to the point closest to 38°36' 3.38" S 146°54' 22.97" E (Point BC). From Point BC the boundary continues along the Crown land boundary

(Nooramunga Marine and Coastal Park) in a generally north easterly direction along the edge of parcels 52C\PP2050, 52F\PP2050, 2001\PP2050, 2005\PP2050, returning to the start at Point A.

References

DEWHA (2011). Additional guidelines for written boundary descriptions for Australian Ramsar wetlands, September 2011, Department of the Environment, Water, Heritage and the Arts. Canberra.

DEWHA (2010). Guidelines for Written Boundary Descriptions for Australian Ramsar Wetlands, Version 1, 27 August 2010. Department of the Environment, Water, Heritage and the Arts. Canberra.

DEWHA (2008). Mapping Specifications for Australian Ramsar Wetlands. Module 1 of the National Guidelines for Ramsar Wetlands – Implementing the Ramsar Convention in Australia. Department of the Environment, Water, Heritage and the Arts. Canberra.

DCNR (1995). *Victorian Ramsar Sites: Definition and Boundary Clarification Project Report*. National Parks Service, Department of Conservation and Natural Resources. Victoria.

DNRE (2002). *Corner Inlet Ramsar Site: Strategic Management Plan*. Department of Natural Resources and Environment. Victoria.

Appendix 1

Area in hectares

Ramsar Site	Albers equal area (Hectares)
Corner Inlet	67193.07

Appendix 2

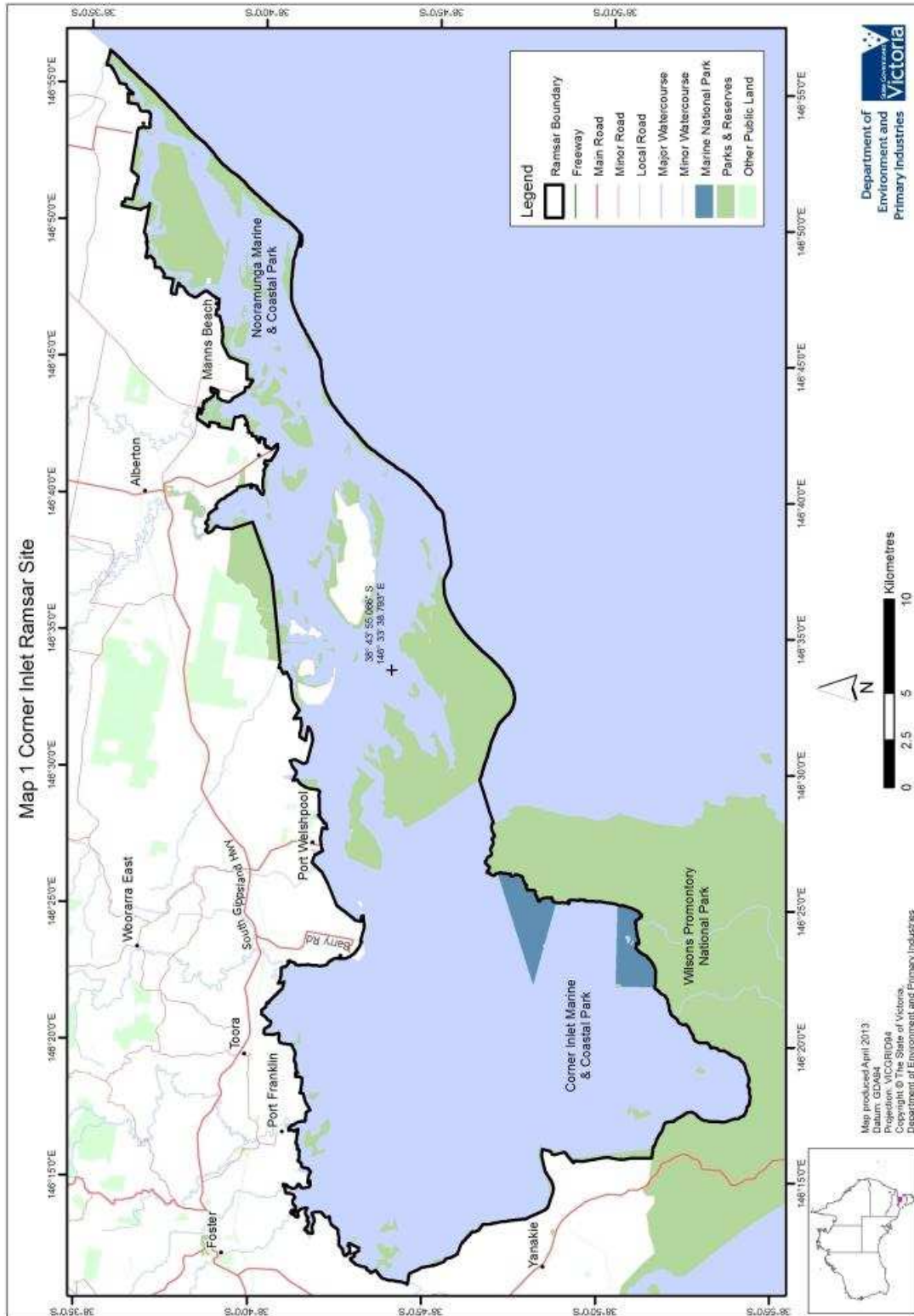
List of coordinates for the Corner Inlet Ramsar Site.

Point	Latitude	Longitude	Point	Latitude	Longitude
A	38°35' 30.84" S	146°56' 11.01" E	AC	38°39' 50.58" S	146°38' 59.73" E
B	38°38' 45.54" S	146°52' 8.1" E	AD	38°39' 13.32" S	146°38' 43.05" E
C	38°40' 47.27" S	146°49' 57.63" E	AE	38°38' 34.24" S	146°38' 33.48" E
D	38°41' 5.12" S	146°49' 34.08" E	AF	38°38' 29.12" S	146°38' 40.05" E
E	38°41' 29.03" S	146°45' 31.16" E	AG	38°39' 22.19" S	146°40' 8.84" E
F	38°41' 36.35" S	146°45' 14.25" E	AH	38°39' 22.64" S	146°40' 8.77" E
G	38°45' 21.75" S	146°36' 49.46" E	AI	38°39' 46.32" S	146°40' 14.56" E
H	38°46' 29.04" S	146°29' 40.59" E	AJ	38°39' 47.34" S	146°40' 14.72" E
I	38°46' 53.81" S	146°28' 6.41" E	AK	38°39' 56.93" S	146°40' 12.49" E
J	38°51' 35.16" S	146°15' 52.66" E	AL	38°40' 30.62" S	146°41' 47.55" E
K	38°41' 14.74" S	146°13' 39.82" E	AM	38°40' 31.53" S	146°41' 50.57" E
L	38°41' 13.71" S	146°13' 42.86" E	AN	38°40' 30.72" S	146°41' 52.12" E
M	38°41' 9.14" S	146°16' 48.31" E	AO	38°40' 29.29" S	146°41' 50.39" E
N	38°41' 14.52" S	146°16' 55.1" E	AP	38°40' 29.5" S	146°41' 50.19" E
O	38°41' 28.74" S	146°18' 39.72" E	AQ	38°40' 29.08" S	146°41' 49.4" E
P	38°41' 27.81" S	146°18' 39.9" E	AR	38°39' 54.94" S	146°42' 7.19" E
Q	38°41' 21.85" S	146°18' 49.61" E	AS	38°39' 54.3" S	146°42' 7.34" E
R	38°41' 22.82" S	146°18' 49.44" E	AT	38°39' 47.19" S	146°42' 13.76" E
S	38°42' 30.11" S	146°23' 3.17" E	AU	38°39' 47.3" S	146°42' 14.6" E
T	38°42' 30.12" S	146°23' 1.72" E	AV	38°39' 40.94" S	146°42' 21.74" E
U	38°42' 44.1" S	146°23' 2.42" E	AW	38°39' 40.29" S	146°42' 21.86" E
V	38°42' 44.08" S	146°23' 3.95" E	AX	38°38' 11.62" S	146°42' 51.91" E
W	38°42' 1.35" S	146°28' 2.27" E	AY	38°38' 12.76" S	146°42' 56.56" E
X	38°42' 0.61" S	146°28' 4.29" E	AZ	38°37' 26.7" S	146°47' 50.08" E
Y	38°41' 57.93" S	146°28' 7.6" E	BA	38°37' 26.06" S	146°47' 50.24" E
Z	38°41' 55.15" S	146°28' 21.38" E	BB	38°36' 2.66" S	146°54' 18.75" E
AA	38°40' 42.31" S	146°33' 53.15" E	BC	38°36' 3.38" S	146°54' 22.97" E
AB	38°40' 25.31" S	146°37' 0.82" E			

Appendix 3

Maps

Map No	Description
1.	Overview map.
2.	Points A to D and points AZ to BC.
3.	Points E to F and points AC to AY.
4.	Points G to H and points W to AB.
5.	Points I to J.
6.	Points K to R.
7.	Points S to Z.



Map 2 Corner Inlet Ramsar Site



Map produced June 2013
 Datum: GDA94
 Projection: MGA Zone 55
 Copyright © The State of Victoria,
 Department of Environment and Primary Industries



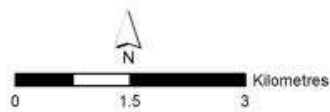
Department of
 Environment and
 Primary Industries



Map 3 Corner Inlet Ramsar Site



Map produced April 2013
Datum: GDA94
Projection: MGA Zone 55
Copyright © The State of Victoria,
Department of Environment and Primary Industries

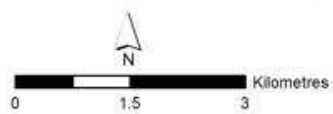


Department of
Environment and
Primary Industries 

Map 4 Corner Inlet Ramsar Site



Map produced April 2013
 Datum: GDA84
 Projection: MGA Zone 55
 Copyright © The State of Victoria,
 Department of Environment and Primary Industries



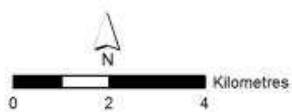
Department of
 Environment and
 Primary Industries

State Government
Victoria

Map 5 Corner Inlet Ramsar Site



Map produced April 2013
 Datum: GDA94
 Projection: MGA Zone 55
 Copyright © The State of Victoria,
 Department of Environment and Primary Industries



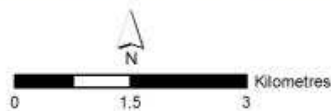
Department of
 Environment and
 Primary Industries



Map 6 Corner Inlet Ramsar Site

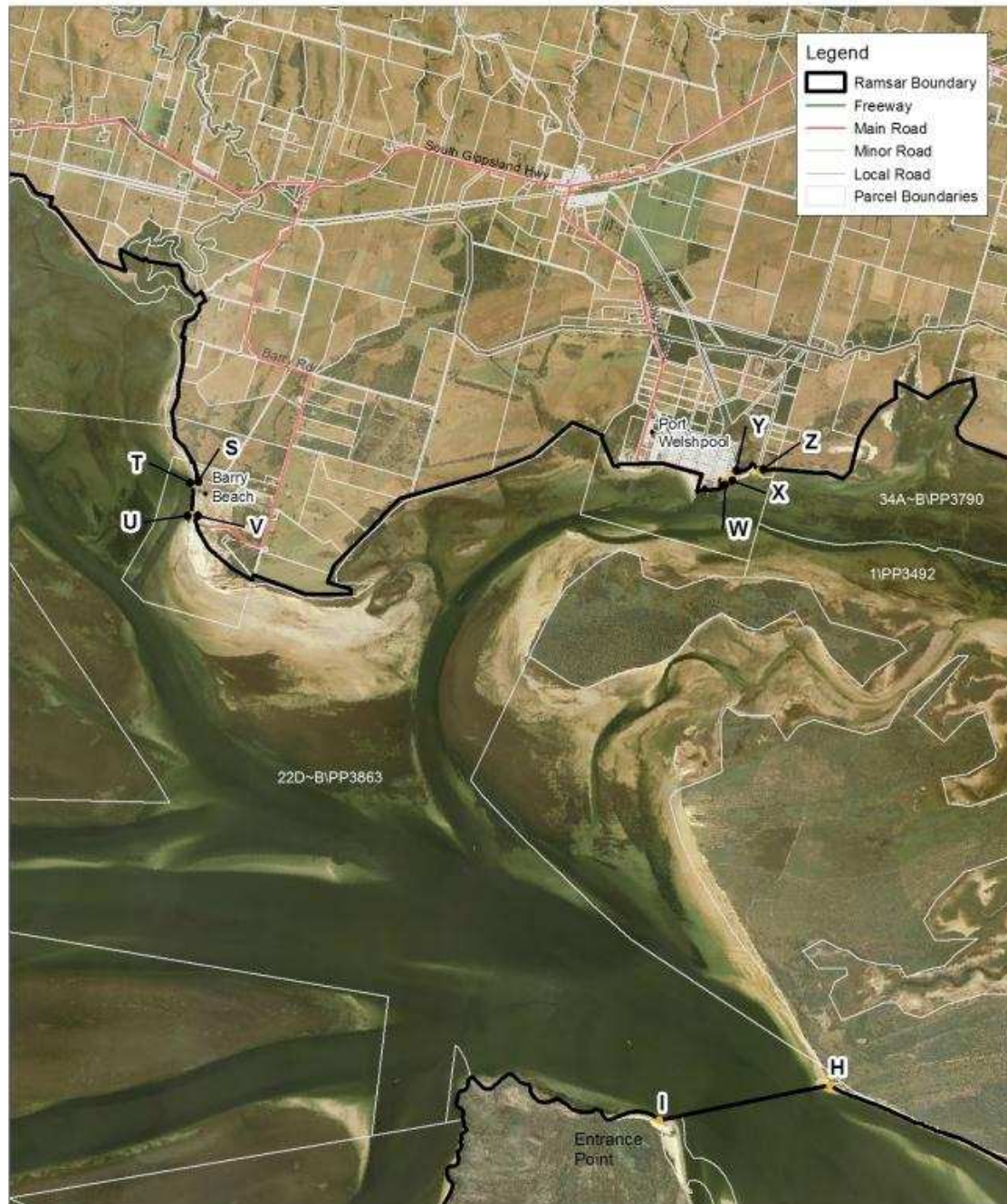


Map produced April 2013
 Datum: GDA94
 Projection: MGA Zone 55
 Copyright © The State of Victoria,
 Department of Environment and Primary Industries

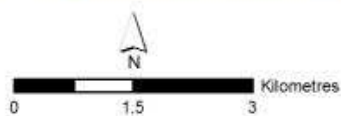


Department of
 Environment and
 Primary Industries
 Victoria

Map 7 Corner Inlet Ramsar Site



Map produced April 2013
 Datum: GDA94
 Projection: MGA Zone 55
 Copyright © The State of Victoria
 Department of Environment and Primary Industries



Department of
 Environment and
 Primary Industries

State Government
Victoria

Customer Service Centre **136 186**

www.depi.vic.gov.au