

Western Port Ramsar Site Boundary Description

Technical Report



Published by the Victorian Government Department of Environment and Primary Industries Melbourne, 2013

© The State of Victoria Department of Environment and Primary Industries Melbourne 2013

This publication is copyright. No part may be reproduced by any process except in accordance with the provisions of the *Copyright Act 1968*.

Authorised by the Victorian Government, 8 Nicholson Street, East Melbourne.

ISBN 978-1-74287-806-5 (online).

For more information contact the DEPI Customer Service Centre 136 186

Citation: DEPI (2013) Western Port Ramsar Site Boundary Description Technical Report. Department of Environment and Primary Industries, East Melbourne, Victoria.

Disclaimer

This publication may be of assistance to you but the State of Victoria and its employees do not guarantee that the publication is without flaw of any kind or is wholly appropriate for your particular purposes and therefore disclaims all liability for any error, loss or other consequence which may arise from you relying on any information in this publication.

Accessibility

If you would like to receive this publication in an accessible format, such as large print or audio, please telephone 136 186, or email customer.service@depi.vic.gov.au

Deaf, hearing impaired or speech impaired? Call us via the National Relay Service on 133 677 or visit www.relayservice.com.au

This document is also available in PDF format on the internet at www.depi.vic.gov.au

Cover photo: Mangroves near Grantville, Yvette Baker (2008).

Contents

Introduction	1
.....	
Methodology of RAMSAR 100 GIS layer boundary realignment	2
.....	
Location	3
.....	
References	8
.....	
Appendix 1	9
.....	
Appendix 2	10
.....	
Appendix 3	13
.....	

Introduction

Ramsar wetlands are wetlands of international importance listed under the Convention on Wetlands (Ramsar, Iran 1971). Victoria has 11 wetlands listed under this convention including the Western Port Ramsar Site.

It is a requirement of the Convention on Wetlands that a suitable map or maps are provided for each Ramsar wetland. The Department of Sustainability, Environment, Water, Population and Communities (SEWPAC), requires that both the written description and the spatial data of the Ramsar site boundaries are accurate. This information is used to gazette the boundary of the declared Ramsar wetland in accordance with Section 327 of the *Environment Protection and Biodiversity Conservation Act 1999* (EPBC Act). Under the EPBC Act there are requirements for approval of activities which have, or are likely to have a significant impact on the ecological character of a declared Ramsar wetland. Precise identification of site boundaries helps to ensure that the exact boundaries of the Ramsar site can be easily identified, which can facilitate compliance with the EPBC Act as well as its effective enforcement.

The RAMSAR100 spatial dataset is a polygon layer that identifies each Victorian Ramsar area individually. RAMSAR100 was produced in conjunction with a report describing each Ramsar site (DCNR 1995). The Department of Environment and Primary Industries (DEPI) is the custodian of RAMSAR100. Most of the line work in RAMSAR100 was initially derived from 1:100,000 reference data. Because of its broader scale, this data was not always consistent with the cadastre and other more accurate features that have now been used to better define the majority of the Western Port Ramsar Site. The updated spatial definition of Western Port Ramsar Site is identified in a new RAMSAR25 spatial dataset.

This report details the written description of the Western Port Ramsar Site to explicitly define the Ramsar boundaries, along with a accompanying maps.

Methodology of RAMSAR 100 GIS layer boundary realignment

An expert panel was convened to provide advice on the original intent of the Ramsar site boundaries based on the description in DCNR (1995) and the RAMSAR100 spatial dataset.

Certificates of Title were obtained as required from the Office of the Surveyor-General, Victoria, to further clarify the intent of the Ramsar boundary.

DEPI manages the RAMSAR100 spatial dataset. The RAMSAR100 boundary of the Ramsar site was used as a guide to select appropriate features from the following 1:25,000 datasets:

- Public Land Management (PLM25) (15 June 2011)
- Road Network 1:25,000 - Vicmap Transport – Road (19 June 2012)
- Vicmap Property 1:25,000 (9 October 2012)
- Watercourse Network 1:25,000 – Vicmap Hydro (19 June 2012).

These datasets are represented in spatial products available through Vicmap¹ - <http://www.land.vic.gov.au>. Alternatively the Ramsar site boundaries can be viewed through the Department of Sustainability and Environments website, at Interactive Maps - <http://www.dse.vic.gov.au/about-dse/interactive-maps>.

High quality digital aerial photography was used where it was necessary to further clarify the original intent of the Ramsar boundary. The following images held by Land Victoria, DSE was used:

- mornington_2007jan11_air_vis_20cm_mga55.ecw: and
- portphillip_2009dec02_air_vis_35cm_mga55.ecw.

The geographical coordinates (latitude, longitude) used in this report are based on Geographic Datum of Australia 1994 (GDA94). The hectares of the site presented in the body of the report have been calculated using Albers Equal Area projection and rounded to the nearest whole number (see Appendix 1 for the site's area calculated to two decimal places).

¹ Terms and conditions do apply.

Location

The Western Port Ramsar site is located 60 kilometres southeast of Melbourne covering an area of 59,955 ha. The site is a large bay connected to Bass Strait by a wide channel between Flinders and Phillip Island and a narrow channel between San Remo and Phillip Island. French Island lies in the middle of Western Port (Figure 1).

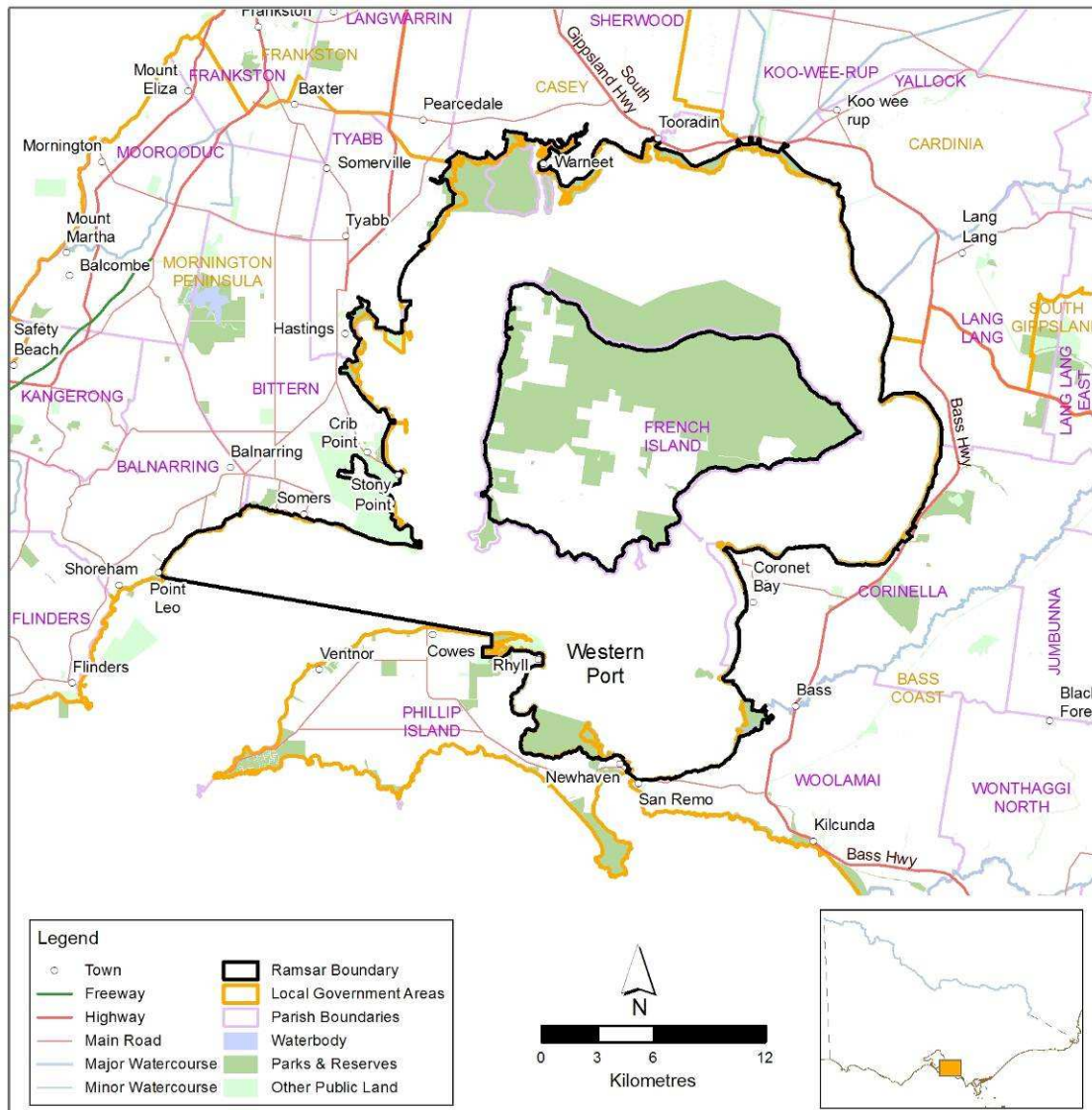


Figure 1: Western Port Ramsar site location.

Written description of the Western Port Ramsar Site

Points referred to in the description below are shown on the maps in Appendix 3. The generated boundary described below is represented by the spatial data in RAMSAR25 held in the DEPI Corporate Spatial Data Library. The datum used is Geographic Datum of Australia 1994(GDA94).

The Western Port Ramsar Site boundary generally follows the boundaries of the Crown land and Crown land reserves situated around Western Port. Also included within the Ramsar Site are:

- Yaringa Marine National Park;
- French Island Marine National Park;
- Churchill Island Marine National Park;
- Sandstone Island (privately owned); and
- Elizabeth Island (privately owned).

French Island is excluded from the Ramsar site as defined by the mean high water mark with the exception of the headland on the south western tip of the island, referred to as Tortoise Head (part of parcel 2027\PP2621) which is included within the Ramsar site.

The boundary commences near Point Leo at the point closest to 38°25' 26.12" S 145°4' 47.95" E (labelled as point A on the map, refer to Appendix 2 for a list of all coordinates and Appendix 3 for maps of the Ramsar site) on the edge of parcel 46A\PP2054. The boundary continues in a straight line in a westerly direction to 38°25' 25.18" S 145°4' 41.76" E (point B). The boundary continues in a north westerly direction along the road to 38°25' 15.53" S 145° 4' 31.3" E (point C) on the edge of parcel 46A\PP2054 (this parcel forms a part of the Flinders-Somers Coastal Reserve).

From point C the boundary continues in a generally north easterly direction along the edge of parcel 46A\PP2054 to the corner at the point closest to 38°25' 1.97" S 145°4' 38.5" E (point D) and continues in a straight line to the point closest to 38°24' 58.56" S 145°4' 41.16" E (point E) on the corner of parcel 46A\PP2054.

From point E the boundary continues in a generally north easterly direction along the edge of parcel 46A\PP2054 to the point closest to 38°23' 36.55" S 145°7' 19.53" E (point F) on the corner of parcel 2010\PP2054. The boundary continues in an easterly direction along the northern edge of parcel 2010\PP2054 to the corner of parcel 16A\PP5036. The boundary continues in a generally northerly direction along the edge of parcel 16A\PP5036 to the corner at the point closest to 38°23' 29.03" S 145°7' 28.86" E (point G).

From point G the boundary continues in a generally north easterly direction along the northern edge of parcel 9B\PP5036 to the corner of parcel 16A\PP5036. The boundary continues in a north easterly direction along the northern edge of parcel 16A\PP5036 and western edge of parcel 137D\PP2159. The boundary continues in a generally easterly direction along the northern edge of parcel 137D\PP2159 (located next to Merricks Creek) to 38°23' 31.14" S 145° 8' 43.63" E (point H). From point H the boundary continues in a straight line in a north easterly direction, crossing Merricks Creek, to the point closest to 38°23' 30.18" S 145°8' 45.42 " E (point I) along the edge of parcel 2048\PP2159.

From point I the boundary continues in a generally easterly direction along the northern edge of parcel 2048\PP2159. The boundary continues in a north easterly direction along the eastern edge of parcel 16\LP12225 to the corner at the point closest to 38°23' 31.64" S 145°8' 54.76" E (point J). The boundary continues in a straight line in a north easterly direction to 38°23' 31.48" S 145°8' 55.08" E (point K). The boundary continues in a generally south easterly direction along the road to 38°23' 32.73" S 145°9' 2.39" E (point L). From point L the boundary continues in a straight line in a southerly direction to the point closest to 38°23' 33.83" S 145°9' 2.59" E (point M) on the corner of parcel 122\LP12225.

From point M the boundary continues in an easterly direction along the northern edge of parcel 2047\PP2159 (forms a part of the Somers Coastal Reserve) to the south-west corner of parcel 140A\PP2159. The boundary continues along this parcel's boundary in a northerly, then south easterly direction (running adjacent to The Boulevard, Somers) to the corner of parcel 3\LP23384. The boundary continues along the parcel boundary to the point closest to 38°23' 43.05" S 145°9' 56.53" E (point N) on the corner of parcel 1\TP675526. From point N the boundary continues in a straight line (crossing Haven Street) to the point closest 38°23' 43.23" S 145°9' 57.12" E (point O) on the corner of parcel 2\LP205740.

From point O the boundary continues in a generally south easterly direction on the Crown land boundary along the southern edge of parcels 2\LP205740, 1\TP187367, 2\LP94995, 1\TP679101, 1\TP108719, 1\TP98551, 2\LP70523, 5\LP84202, 7\LP98856, 8\LP98856, 2\PS409222 and RES1\LP13143. The boundary continues in a generally easterly

direction along the Crown land boundary on the northern edge of parcel 2043\PP2159 to the corner at the point closest to 38°24' 2.95" S 145°11' 32.27" E (point P).

From point P the boundary continues in a southerly direction along the parcel boundary (2043\PP2159) to 38°24' 3.31" S 145°11' 32.1" E (point Q). From point Q the boundary continues in a south easterly direction along the shoreline (mean high water mark (MHWM), as defined by the aerial photography²) to Sandy Point. The boundary continues along the shoreline, including the intertidal area, and then follows the 20\TP877881 parcel boundary around to Stony Point. The boundary continues along the shoreline, along the edge of parcels 7~11\PP5212, 7D1~11\PP5212, and 7D~11\PP5212 (excluding the marine rescue facility from the Ramsar site) to 38°22' 23.53" S 145°13' 15.52" E (point R).

From point R the boundary continues in a straight line in a north westerly direction to the point closest to 38°22' 23.45" S 145°13' 15.24" E (point S) on the corner of parcel 19A~10\PP5212. The boundary continues in a south westerly then generally north westerly direction along the edge of parcel 19A~10\PP5212, (running alongside the road reserves for Stony Point Road and the Esplanade, Crib Point) and continues along the edge of parcel 2002\PP2159 to the corner of parcel 2040\PP2159. The boundary continues around the southerly, easterly and northerly edge of parcel 2040\PP2159 to the corner of parcel 89B\PP2159. The boundary continues in a generally northerly direction along the western edge of parcel 89B\PP2159 to the corner at the point closest to 38°20' 19.93" S 145°12' 8.2" E (point T). The boundary continues in a straight line in a north westerly direction to the point closest to 38°20' 19.19" S 145°12' 7.35" E (point U).

From point U the boundary continues in a generally northerly direction along the western edge of parcels 85D\PP2159 and 84F\PP2159 to 38°19' 7.8" S 145°11' 25.92" E (point V). From point V the boundary continues in a straight line (crossing Warrangine Creek) in an easterly direction to 38°19' 7.35" S 145°11' 28.62" E (point W).

From point W the boundary continues in a south easterly, easterly then northerly direction along the edge of parcels 84F\PP2159, 5~F\PP5369, 17~D\PP5369, 21~D\PP5369, 18~D\PP5369, 19~D\PP5369, 24~D\PP5369, 6~A\PP5369, 5~A\PP5369, 6~A\PP5369 to the corner at the point closest to 38°17' 59.95" S 145°11' 30.68" E (point X). The boundary continues north easterly in a straight line to the point closest to 38°17' 59.3" S 145°11' 31.14" E (point Y).

From point Y the boundary continues in a northerly direction along the western edge of parcel 12~19\PP5369 until intersecting with Marine Parade in Hastings. The line continues northerly along the eastern side of Marine Parade until intersecting with parcel 1A~19\PP5369. The boundary continues along the northern edge of parcel 1A~19\PP5369, 12~19\PP5369, 4A\PP5369, and 77A\PP3666 to the point closest to 38°18' 15.24" S 145°12' 46.47" E (point Z).

From point Z the boundary continues easterly then generally northerly along the shoreline (MHWM) (as defined by the aerial photography) to the point closest to 38°15' 53.89" S 145°14' 10.1" E (point AA) on the corner of parcel 2005\PP3666. The boundary continues westerly and then generally northerly along the edge of parcels 2005\PP3666, 29B\PP3666, 29A\PP3666, 28H2\PP3666 to the point closest to 38°13' 53.25" S 145°14' 24.62" E (point AB) on the corner of parcel 28D\PP3666.

From point AB the boundary continues in a straight line (crossing Watson Creek) in a northerly direction to the point closest to 38°13' 52.09" S 145°14' 24.96" E (point AC). From Point AC the boundary continues in a generally easterly then northerly direction along the edge of parcel 28H2\PP3666 and 29A\PP3666 to the corner at the point closest to 38°13' 24.35" S 145°15' 7.26" E (point AD). The boundary continues in a straight line to 38°13' 23.73" S 145°15' 7.35" E (point AE). From point AE the boundary continues westerly then generally north westerly direction along the edge of parcels 100\PP2972, 2001\PP3487, 95K\PP3487, 92D\PP3487 to 38°12' 49.62" S 145°18' 44.77" E (point AF). The boundary continues north in a straight line (crossing Irene Parade, Cannons Creek) to the point closest to 38°12' 48.98" S 145°18' 44.63" E (point AG).

From point AG the boundary continues a northerly, easterly then southerly direction along the edge of parcel 17~1A\PP3487 to the point closest to 38°12' 51.69" S 145°18' 56.28" E (point AH) and then continues in a southerly direction in a straight line (again crossing Irene Parade) to 38°12' 52.67" S 145°18' 56.69" E (point AI).

From point AI the boundary continues south easterly along the edge of parcel 92D\PP3487. The boundary continues along the Crown land boundary following parcels 92E\PP3487, 2\LP99897 to the corner at 38°12' 36.43" S 145°19' 40.41" E (point AJ). The boundary continues north easterly in a straight line to the point closest to 38°12' 35.85" S 145°19' 41.39" E (point AK), and then continues around the Crown land boundary to include Cannons Creek. The boundary follows the edge of parcel 108B\PP3487, eastern edge of 1\TP98607, and southern edge of 1\TP118413. The boundary continues along the inland Crown land boundary around Blind Bight and Warneet including parcels 110C\PP3487, 3~K\PP5833, 1~K\PP5833, 2001\PP5833, 2~K\PP5833, 58~J\PP5833, 54~B\PP5833, 7A~A\PP5833, 32~A\PP5833,

² In the aerial photography interpretation of the Mean High Water Mark (MHWM) is not necessarily coincident with the tide level.

111A\PP3487, 110B\PP3487, 101C\PP3487. The boundary continues along the southern edge of parcels 1\TP761784, 1\LP56149, 2\PS338490, 3\LP56149 to 38°12' 46.51" S 145°22' 41.07" E (point AL).

From point AL the boundary continues along the shoreline (MHWM) to the point closest to 38°12' 48.5" S 145°22' 46.78" E (point AM) on the corner of parcel 5B\PP2920. From Point AM the boundary continues along the Crown land boundary, along the edge of parcel boundaries 5B\PP2920 and 1A\PP2920 to the point closest to 38°12' 50.79" S 145°27' 24.12" E (point AN). The boundary continues easterly in a straight line to the point closest to 38°12' 51.2" S 145°27' 26.62" E (point AO).

From point AO the boundary continues in a southerly direction along the edge of parcel 2\PS332567 and continues in a generally south easterly direction along the Crown land boundary (the inland edge of parcels 2B\PP3935, 2C\PP3935, the southern edge of 2D\PP3935 and the inland edge of 4A~D\PP3935) to the point closest to 38°17' 14.68" S 145°30' 46.72" E (point AP). The boundary continues easterly in a straight line (crossing the lower Lang Lang River) to the point closest to 38°17' 14.57" S 145°30' 50.16" E (point AQ) and continues south easterly along the western edge of parcels 18C\PP2968 and CP105578 to the point closest to 38°17' 57.75" S 145°31' 19.88" E (point AR).

From point AR the boundary continues in a straight line to the point closest to 38°17' 58.54" S 145°31' 20.5" E (point AS). The boundary continues southerly along the Crown land boundary (parcel 24D\PP2968) to the point closest to 38°18' 18.19" S 145°31' 17.83" E (point AT). The boundary continues in a southerly direction along the shoreline (MHWM) (excluding the caravan park) to the point closest to 38°19' 3.99" S 145°30' 59.04" E (point AU).

From point AU the boundary continues in a generally southerly direction along the Crown land boundary (along the edge of parcels 24D\PP2968, 22\PP5396, 2003\PP2968, 39B\PP2968) to the point closest to 38°21' 30.38" S 145°33' 11.11" E (point AV). From point AV the boundary continues southerly in a straight line to the point closest to 38°21' 31.27" S 145°33' 10.99" E (point AW).

From point AW the boundary continues southerly along the Crown land boundary (parcels 96B\PP2453, 10~B\PP5348, 9~B\PP5348, 192A\PP2453) to 38°24' 53.86" S 145°29' 20.71" E (point AX). From point AX the boundary continues in a straight line (crossing creek 3849 at Corinella) in a north westerly direction to 38°24' 53.5" S 145°29' 19.81" E (point AY).

From point AY the boundary continues in generally north westerly direction along the parcel boundary (7\PP2453) to the corner where it meets with the shoreline (MHWM). The boundary continues along the shoreline (MHWM) to 38°24' 27.34" S 145°28' 49.53" E (point AZ) and continues westerly along the parcel boundaries (1\TP23986 and 2\PS431023) to 38°24' 28.52" S 145°28' 44.03" E (point BA). From point BA the boundary continues along the shoreline (MHWM) to 38°24' 28.55" S 145°28' 37.27" E (point BB), then along the parcel boundary (1\PS311605 and 2\PS431023) to 38°24' 28.2" S 145°28' 35.55" E (point BC) and then along the shoreline (MHWM) to 38°24' 29.708" S 145°28' 16.886" E (point BD). It then follows the northern edge of parcel 2\PS514759 to its north-west corner. The boundary then continues in a southerly direction to 38°24' 29.72" S 145°28' 16.88" E (point BE).

From point BE the boundary continues westerly in a straight line to 38°24' 29.84" S 145°28' 16.03" E (point BF) and then along the parcel boundary (2\LP221310) to 38°24' 30.19" S 145°28' 4.43" E (point BG). The boundary then continues along the shoreline (MHWM) to 38°24' 29.9" S 145°27' 57.4" E (point BH). From point BH the boundary continues in a generally westerly direction along the parcel boundary (parcels 2\PP2453, 5\LP213337, 1\LP213337, 2014\PP2453, 4B\PP2453, 72\PP5198) following the Crown land boundary around Corinella.

The boundary continues in a generally southerly direction following the Crown land boundary (along parcels 72\PP5198 and 70A\PP2453) to the point closest to 38°27' 56.99" S 145°25' 32.25" E (point BI), continuing southerly in a straight line to 38°27' 57.71" S 145°25' 31.79" E (point BJ) and continuing along the Crown land boundary (parcel 81A\PP2453). The boundary continues south easterly along the western and southern edge of parcel 81\PP2453, then easterly along the northern edge of parcel 82B\PP2453, then westerly along the southern edge of parcel 82C\PP2453 to 38°29' 29.32" S 145°26' 39.85" E (point BK).

The boundary continues southerly in a straight line to the point closest to 38°29' 29.74" S 145°26' 39.76" E (point BL). The boundary continues in a generally southerly direction along the Crown land boundary (along parcels 18~28\PP3878, 5\PS641281, 6\PS641281, 2015\PP3878, 1\TP520547, 1\TP193922, 1\TP228305, 1\TP913957, 1\TP913929) to 38°31' 8.72" S 145°23' 30.11" E (point BM).

From point BM the boundary continues in a straight line in a westerly direction to the point closest to 38°31' 8.57" S 145°23' 29.17" E (point BN) and continues along the inland edge of the Crown land boundary (parcel 11A~A\PP5699) to 38°31' 13.14" S 145°22' 2.74" E (point BO).

The boundary continues in a north westerly direction along the north eastern edge of San Remo Bridge to $38^{\circ}31' 0.89''$ S $145^{\circ}21' 42.09''$ E (point BP) and then continues along the Crown land boundary (along parcels 46\PP5590, 7-4\PP5590, 9A\PP5590, 149B\PP3389, 149A\PP3389, 6B-5\PP5674, 94C\PP3389, 2061\PP3389) to $38^{\circ}27' 3.52''$ S $145^{\circ}16' 40.67''$ E (point BQ).

From point BQ the boundary continues in a straight line in a westerly direction across Western Port Bay, returning to the start at point A, at Point Leo.

References

DEWHA (2011). Additional guidelines for written boundary descriptions for Australian Ramsar wetlands, September 2011, Department of the Environment, Water, Heritage and the Arts. Canberra.

DEWHA (2010). Guidelines for Written Boundary Descriptions for Australian Ramsar Wetlands, Version 1, 27 August 2010. Department of the Environment, Water, Heritage and the Arts. Canberra.

DEWHA (2008). Mapping Specifications for Australian Ramsar Wetlands. Module 1 of the National Guidelines for Ramsar Wetlands – Implementing the Ramsar Convention in Australia. Department of the Environment, Water, Heritage and the Arts. Canberra.

DCNR (1995). *Victorian Ramsar Sites: Definition and Boundary Clarification Project Report*. National Parks Service, Department of Conservation and Natural Resources. Victoria.

DSE (2003). *Western Port Ramsar Site: Strategic Management Plan*. Department of Sustainability and Environment. Victoria.

Appendix 1

Site hectares and projection.

Ramsar site name	Albers equal area (hectares)
Western Port	59,955.05

Appendix 2

List of coordinates

Point	Latitude	Longitude	Location description
A	38°25' 26.12" S	145°4' 47.95" E	On the eastern edge of parcel 46A\PP2054 at Point Leo.
B	38°25' 25.18" S	145°4' 41.76" E	Within the Flinders-Somers Coastal Reserve at Point Leo.
C	38°25' 15.53" S	145°4' 31.3" E	On the boundary between parcel 46A\PP2054 and the road reserve for Western Parade, Point Leo.
D	38°25' 1.97" S	145°4' 38.5" E	Where the road reserve for Point Leo Road meets parcel 46A\PP2054.
E	38°24' 58.56" S	145°4' 41.16" E	Where the south-east corner of parcel 46A\PP2054 and the north-west corner of parcel 2010\PP2054 intersect.
F	38°23' 36.55" S	145°7' 19.53" E	Where the north-east corner of parcel 46A\PP2054 and the north west corner of parcel 20120\PP2054 intersect.
G	38°23' 29.03" S	145°7' 28.86" E	Where the south-east corner of the road reserve for Library Road, Balnarring Beach meets the western edge of parcel 16A\PP5036
H	38°23' 31.14" S	145°8' 43.63" E	On the boundary between parcels 137D\PP2159 and 2048\PP2159, near the footbridge.
I	38°23' 30.18" S	145°8' 45.42" E	Where the south-east corner of parcel 1\TP4604 meets parcel 2048\PP2159.
J	38°23' 31.64" S	145°8' 54.76" E	Where the eastern corner of parcel 16\LP12225 meets the road reserve for the The Promenade, Somers.
K	38°23' 31.48" S	145°8' 55.08" E	Located between parcels 16\LP12225 and CP168121, Somers.
L	38°23' 32.73" S	145°9' 2.39" E	Located between parcels 26\LP12225 and 2047\PP2159, Somers.
M	38°23' 33.83" S	145°9' 2.59" E	The intersection of the south-west corner of parcel 122\LP12225 and the north boundary of parcel 2047\PP2159, which forms a part of the Somers Foreshore Reserve.
N	38°23' 43.05" S	145°9' 56.53" E	The intersection of the south-east corner of parcel 1\TP675526 and parcel 140A\PP2159.
O	38°23' 43.23" S	145°9' 57.12" E	The intersection of the south-west corner of parcel 1\TP675526 and parcel 140A\PP2159.
P	38°24' 2.95" S	145°11' 32.27" E	Where the south-east corner of parcel 2003\PP2159 meets the north-east corner of parcel 2043\PP2159.
Q	38°24' 3.31" S	145°11' 32.1" E	On the eastern edge of parcel 2043\PP2159.
R	38°22' 23.53" S	145°13' 15.52" E	A point near the south-west corner of parcel 7D~11\PP5212.
S	38°22' 23.45" S	145°13' 15.24" E	The north-east corner of parcel 19A~10\PP5212 which forms a part of the Western Port Coastal Reserve.
T	38°20' 19.93" S	145°12' 8.2" E	The north-west corner of parcel 89B\PP2159, next to Woolleys Road, Crib Point.
U	38°20' 19.19" S	145°12' 7.35" E	The south-west corner of parcel 85D\PP2159.
V	38°19' 7.8" S	145°11' 25.92" E	In the north-east section of parcel CP172381, on the border between Bittern and Hastings.
W	38°19' 7.35" S	145°11' 28.62" E	The intersection of the west boundary of parcel RES 4\PP435576 and parcel 84F\PP2159, on the western side of Warrengine Creek.
X	38°17' 59.95" S	145°11' 30.68" E	The north-west corner of parcel 6~A\PP5369.
Y	38°17' 59.3" S	145°11' 31.14" E	The southern corner of parcel 12~19\PP5369.
Z	38°18' 15.24" S	145°12' 46.47" E	The south-west corner of parcel 76C\PP3666.

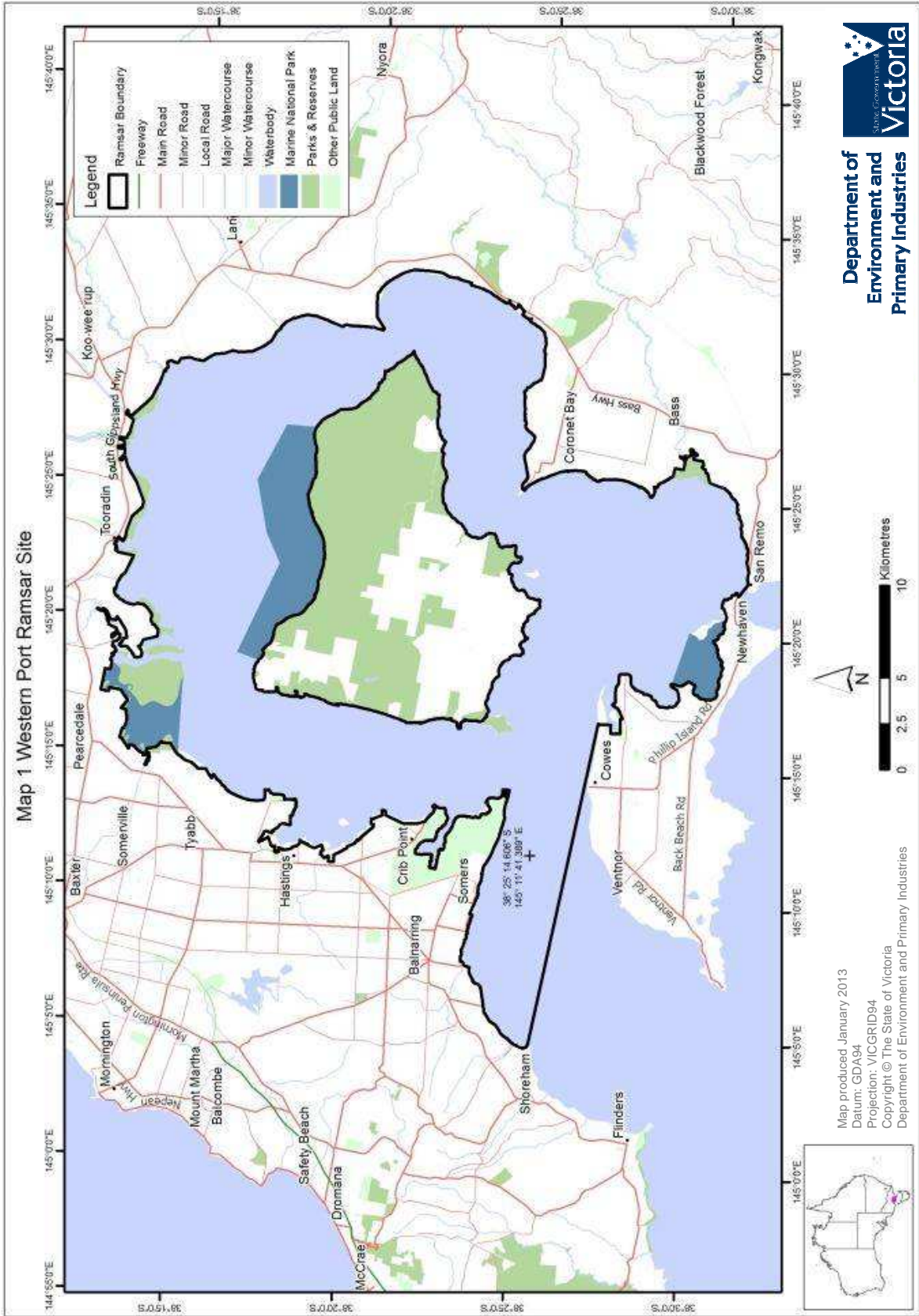
Point	Latitude	Longitude	Location description
AA	38° 15' 53.89" S	145° 14' 10.1" E	The south-east corner of parcel 2005\PP3666.
AB	38° 13' 53.25" S	145° 14' 24.62" E	The north-east corner of parcel 28D\PP3666.
AC	38° 13' 52.09" S	145° 14' 24.96" E	The south-east corner of parcel 1\TP163069.
AD	38° 13' 24.35" S	145° 15' 7.26" E	The north-east corner of parcel 28B\PP3666.
AE	38° 13' 23.73" S	145° 15' 7.35" E	The point opposite point AD, on the southern edge of parcel 100\PP2972 which forms a part of the North Western Nature Conservation Reserve.
AF	38° 12' 49.62" S	145° 18' 44.77" E	On the northern boundary of parcel 92D\PP3487 which forms a part of the Western Port Coastal Reserve.
AG	38° 12' 48.98" S	145° 18' 44.63" E	The south-west corner of parcel 17~1A\PP3487.
AH	38° 12' 51.69" S	145° 18' 56.28" E	The southern corner of parcel 17~1A\PP3487.
AI	38° 12' 52.67" S	145° 18' 56.69" E	On the northern boundary of parcel 92D\PP3487.
AJ	38° 12' 36.43" S	145° 19' 40.41" E	The south-west corner of the road reserves for Adeneys Road, Cannons Creek.
AK	38° 12' 35.85" S	145° 19' 41.39" E	The intersection of the south-east corner of the road reserve for Adeneys Road and the south-west corner of parcel 108B\PP3487 which forms a part of the Western Port Intertidal Coastal Reserve.
AL	38° 12' 46.51" S	145° 22' 41.07" E	Where the eastern boundary of parcel 7A~1\PP3487 and the reserve for the South Gippsland Highway, Tooradin meet.
AM	38° 12' 48.5" S	145° 22' 46.78" E	Where the north-west corner of parcel 5B\PP2920 is next to the reserve for the South Gippsland Highway, Tooradin.
AN	38° 12' 50.79" S	145° 27' 24.12" E	The north-east corner of Crown parcel 1A\PP2920. This point is next to the reserve for the South Gippsland Highway, Koo Wee Rup.
AO	38° 12' 51.2" S	145° 27' 26.62" E	The north-west corner of parcel 2\PS332567. This point is next to the reserve for the South Gippsland Highway, Koo Wee Rup.
AP	38° 17' 14.68" S	145° 30' 46.72" E	The eastern corner of parcel 4A~D\PP2968 at Caldermeade.
AQ	38° 17' 14.57" S	145° 30' 50.16" E	The western corner of parcel 18C\PP3935 at Lang Lang.
AR	38° 17' 57.75" S	145° 31' 19.88" E	The south-west corner of parcel CP105578.
AS	38° 17' 58.54" S	145° 31' 20.5" E	The northern most point of parcel 24D\PP2968, which forms a part of the Western Port Coastal Reserve.
AT	38° 18' 18.19" S	145° 31' 17.83" E	The south-west corner of parcel 2\PP411224 (near Foreshore Road at Land Lang).
AU	38° 19' 3.99" S	145° 30' 59.04" E	Where the western corner of parcel 2\LP206272 and the eastern edge of parcel 24D\PP2968 meet at Jam Jerrup.
AV	38° 21' 30.38" S	145° 33' 11.11" E	The south-east corner of parcel 39B\PP2968 which forms a part of the Western Port Intertidal Coastal Reserve at Jam Jerrup.
AW	38° 21' 31.27" S	145° 33' 10.99" E	The north-east corner of parcel 96B\PP2453.
AX	38° 24' 53.86" S	145° 29' 20.71" E	A point on the west boundary of parcel 192A\PP2453.
AY	38° 24' 53.5" S	145° 29' 19.81" E	Where the east boundary of parcel 7\PP2453 meets the shoreline (MHW).)
AZ	38° 24' 27.34" S	145° 28' 49.53" E	Where the north edge of parcel 1\TP23986 meets the shoreline (MHW).)
BA	38° 24' 28.52" S	145° 28' 44.03" E	Where the western edge of parcel 1\TP23986 meets the shoreline (MHW).)
BB	38° 24' 28.55" S	145° 28' 37.27" E	Where the eastern edge of parcel 1\PS311605 meets the shoreline (MHW).)
BC	38° 24' 28.2" S	145° 28' 35.55" E	Where the northern edge of parcel 2\PS431023 meets the shoreline (MHW)..)
BD	38° 24' 29.27" S	145° 28' 17.65" E	Where the northern edge of parcel 2\PS514759 meets the shoreline

Point	Latitude	Longitude	Location description
			(MHW). (MHW).
BE	38°24' 29.72" S	145°28' 16.88" E	Where the western edge of parcel 2\PS514759 meets the shoreline (MHW).
BF	38°24' 29.84" S	145°28' 16.03" E	Where the eastern edge of parcel 2\LP221310 meets the shoreline (MHW).
BG	38°24' 30.19" S	145°28' 4.43" E	Where the north edge of parcel 2\LP221310 meets the shoreline (MHW).
BH	38°24' 29.9" S	145°27' 57.4" E	Where the shoreline (MHW) meets the northern edge of parcel 2\PP2453.
BI	38°27' 56.99" S	145°25' 32.25" E	The south-east corner of parcel 70A\PP2453 (next to the reserve for Bluff Road at Bass).
BJ	38°27' 57.71" S	145°25' 31.79" E	The north-west corner of parcel 81A\PP2453 which forms a part of the Reef Island and Bass River Mouth Nature Conservation Reserve.
BK	38°29' 29.32" S	145°26' 39.85" E	North of point BL, on the boundary between parcels 2018\PP2453 and 82C\PP2453.
BL	38°29' 29.74" S	145°26' 39.76" E	The north-west corner of parcel 2\PS522714.
BM	38°31' 8.72" S	145°23' 30.11" E	The north-west corner of parcel 1\TP913929 at San Remo.
BN	38°31' 8.57" S	145°23' 29.17" E	The north-east corner of parcel 11A~A\PP5699 which forms a part of the San Remo Coastal Reserve.
BO	38°31' 13.14" S	145°22' 2.74" E	Where the inland edge of parcel 11A~A\PP5699 meets the Phillip Island Road at San Remo.
BP	38°31' 0.89" S	145°21' 42.09" E	Where the Phillip Island Road at Newhaven meets the inland edge of parcel 46\PP5590.
BQ	38°27' 3.52" S	145°16' 40.67" E	Where the west boundary of parcel 2061\PP3389 meets the mean high water mark.

Appendix 3

Maps

Map number	Description
1	Overview map
2	Point Leo to Crib Point – points A to U.
3	Bittern to Blind Bight – points V to AK.
4	Tooradin to Koo Wee Rup – points AL to AO.
5	Caldermeade to Corinella – points AP to BH.
6	Coronet Bay to Newhaven – points BJ to BP.
7	Silverleaves, Phillip Island – point BQ.



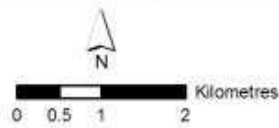
Map 1 Western Port Ramsar Site

Map produced January 2013
 Datum: GDA94
 Projection: VICGRID94
 Copyright © The State of Victoria
 Department of Environment and Primary Industries

Map 2 Western Port Ramsar Site

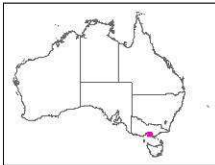
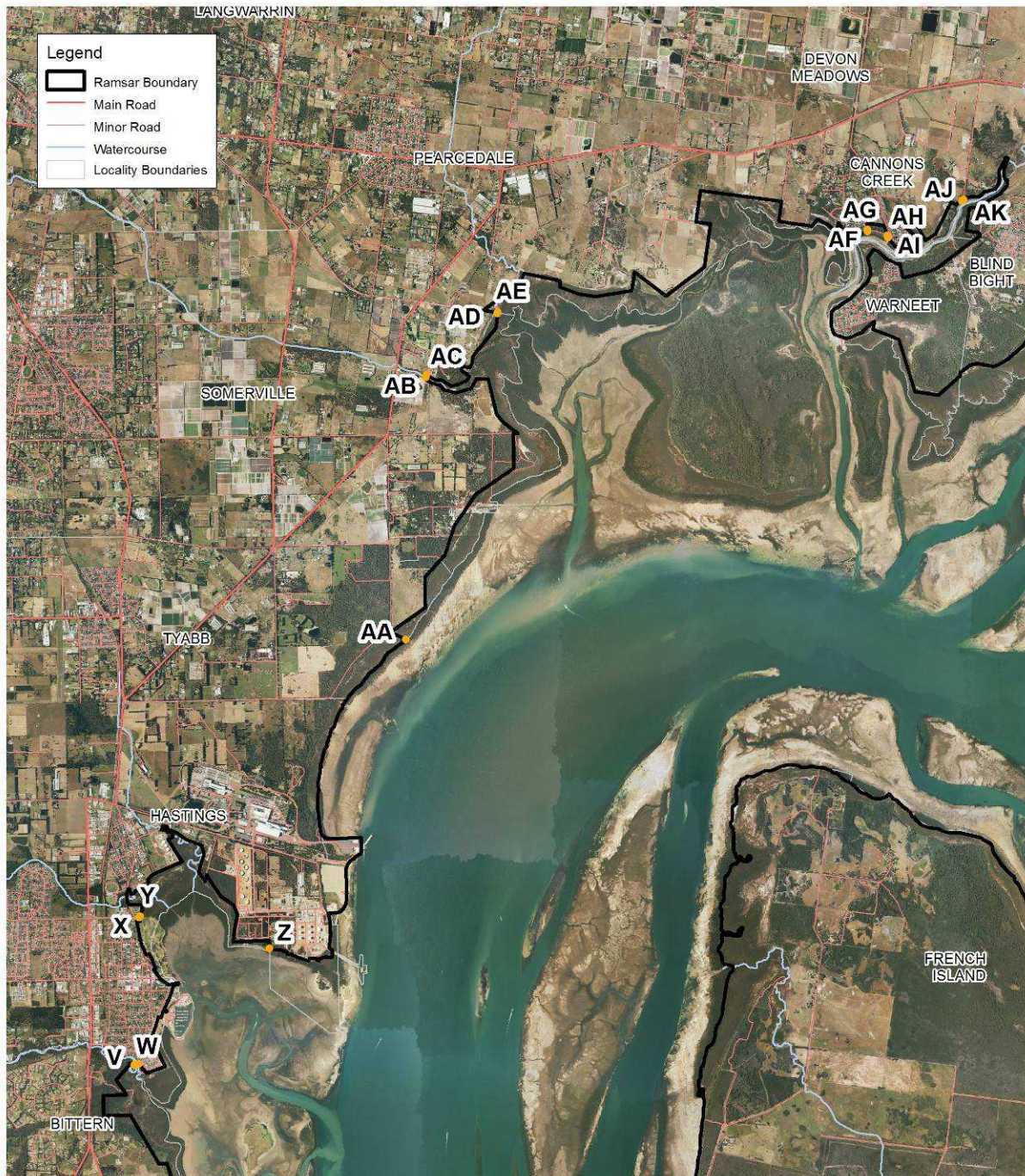


Map produced November 2012
 Datum: GDA94
 Projection: MGA Zone 55
 Copyright © The State of Victoria
 Department of Environment and Primary Industries

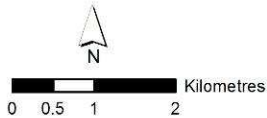


**Department of
 Environment and
 Primary Industries** 

Map 3 Western Port Ramsar Site

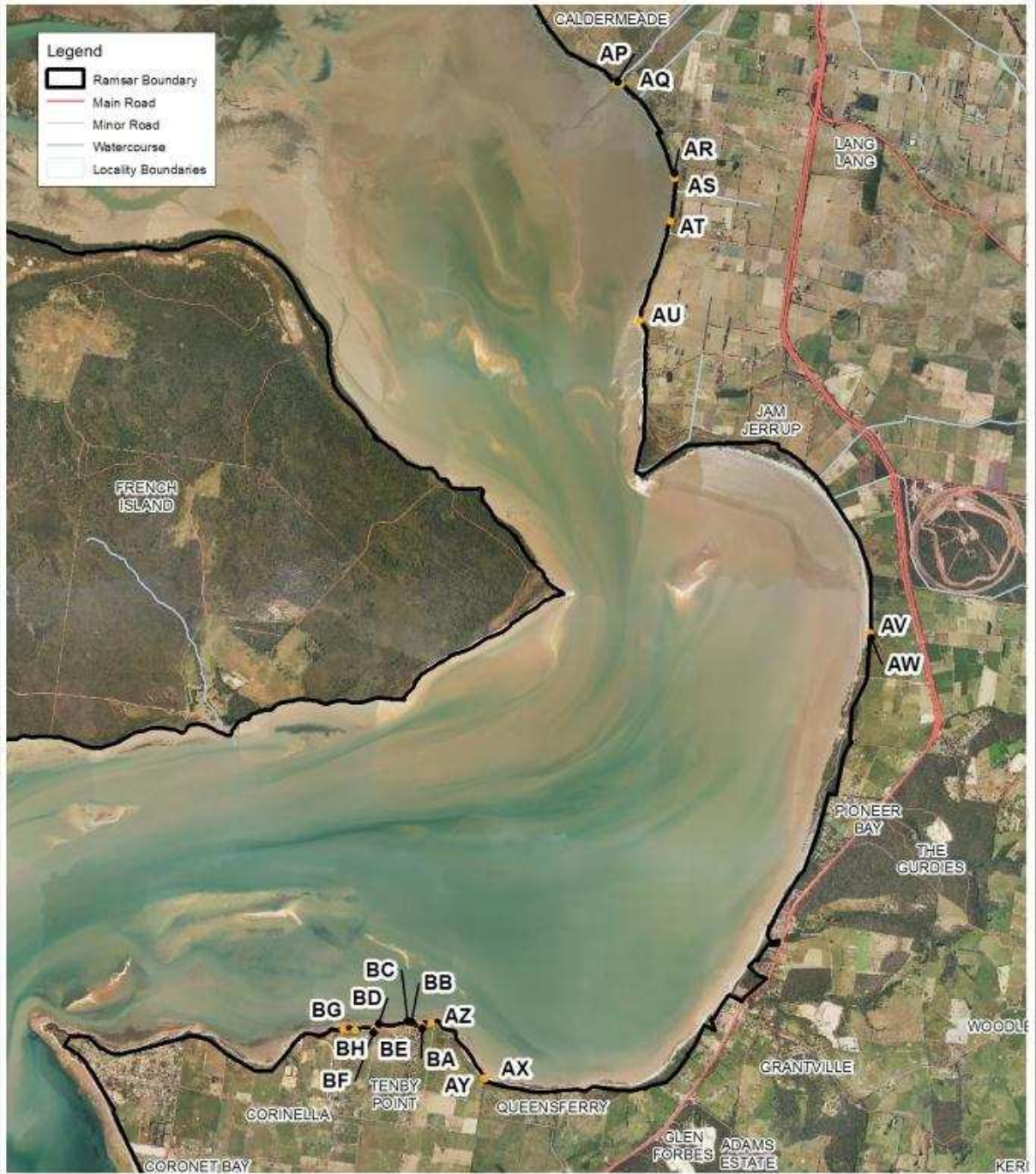


Map produced November 2012
 Datum: GDA94
 Projection: MGA Zone 55
 Copyright © The State of Victoria
 Department of Environment and Primary Industries

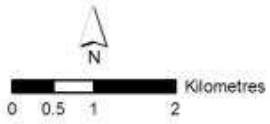


**Department of
 Environment and
 Primary Industries** 

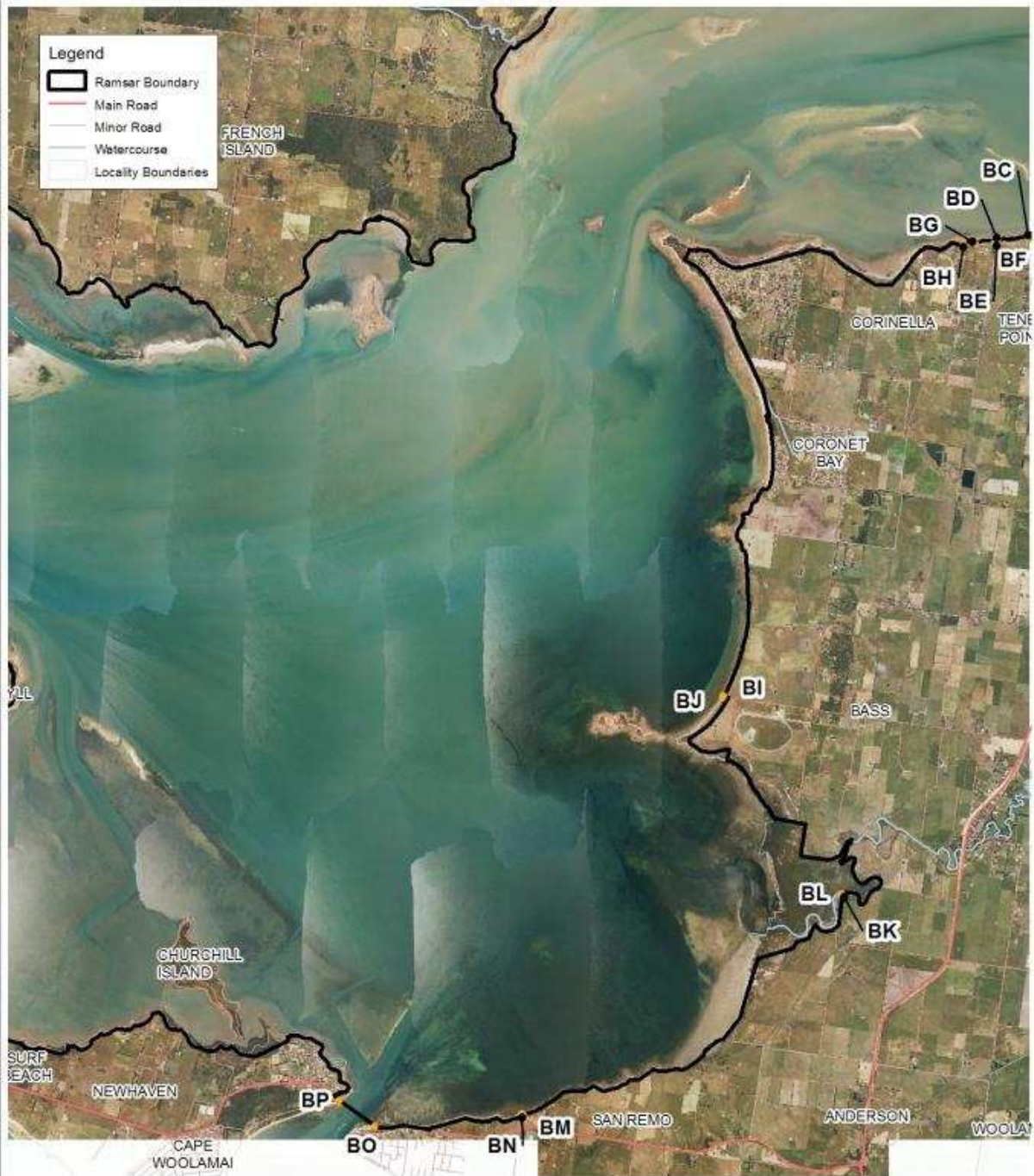
Map 5 Western Port Ramsar Site



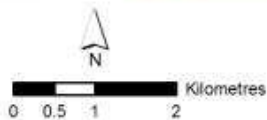
Map produced November 2012
 Datum: GDA94
 Projection: MGA Zone 55
 Copyright © The State of Victoria
 Department of Environment and Primary Industries



Map 6 Western Port Ramsar Site



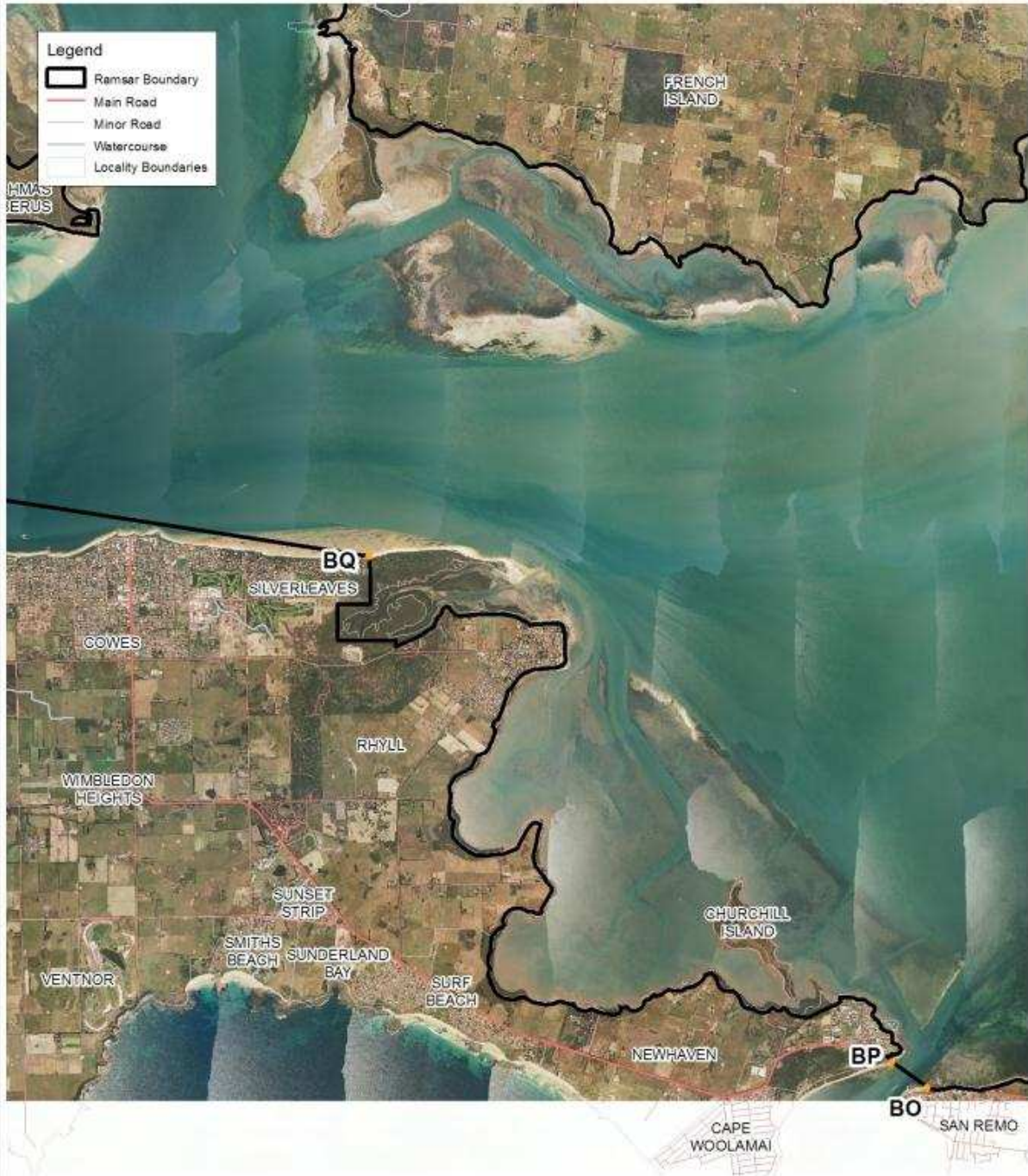
Map produced November 2012
 Datum: GDA94
 Projection: MGA Zone 55
 Copyright © The State of Victoria
 Department of Environment and Primary Industries



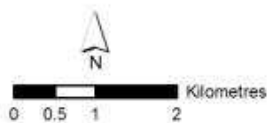
**Department of
 Environment and
 Primary Industries**



Map 7 Western Port Ramsar Site



Map produced November 2012
 Datum: GDA94
 Projection: MGA Zone 55
 Copyright © The State of Victoria
 Department of Environment and Primary Industries



**Department of
 Environment and
 Primary Industries**



Customer Service Centre **136 186**

www.depi.vic.gov.au