

### Planning for the Northern Region's water future

The Northern Region Sustainable Water Strategy is a Victorian Government initiative to secure the region's water future.

The Discussion Paper is the first step in developing the Northern Region Sustainable Water Strategy. It contains a regional inventory of current water resources and allocations, and examines how challenges such as climate change may affect those resources over the next 50 years. The Discussion Paper also identifies potential options for managing these challenges.

#### About the Northern Region Sustainable Water Strategy

The Victorian Government is planning for the future of the Northern Region's water supplies in conjunction with local water corporations, catchment management authorities, and key stakeholder groups. The Sustainable Water Strategy will guide water management and investment in response to climate change and other significant risks to water availability.

It will analyse all aspects of water management in the Northern Region, share the findings and, together with the community, determine a fair and sustainable balance between urban, industrial, agricultural and environmental water needs for the next 50 years. More information about the current status of the Region's water resources, the challenges, and options for the future are available in Fact Sheets 2, 3 and 4.

Sustainable Water Strategies are an initiative of the Government's *Our Water Our Future* Action Plan. They will complement the measures to secure water for Victoria's growing population and economy in the face of drought and the challenge of climate change. These measures, detailed in the June 2007 *Our Water Our Future: The Next Stage of the Government's Water Plan*, include a \$1 billion commitment to upgrade irrigation infrastructure in northern Victoria.

#### The process

The Northern Region Sustainable Water Strategy Discussion Paper has been released to describe the future challenges to water supplies in the northern region, and open discussion on possible options for the future.

Feedback on the Discussion Paper will be coordinated through formal submissions and stakeholder briefings, and used to develop a draft Strategy, due for release in mid-2008.

A further period of consultation will be held before the final Strategy is released in early 2009.

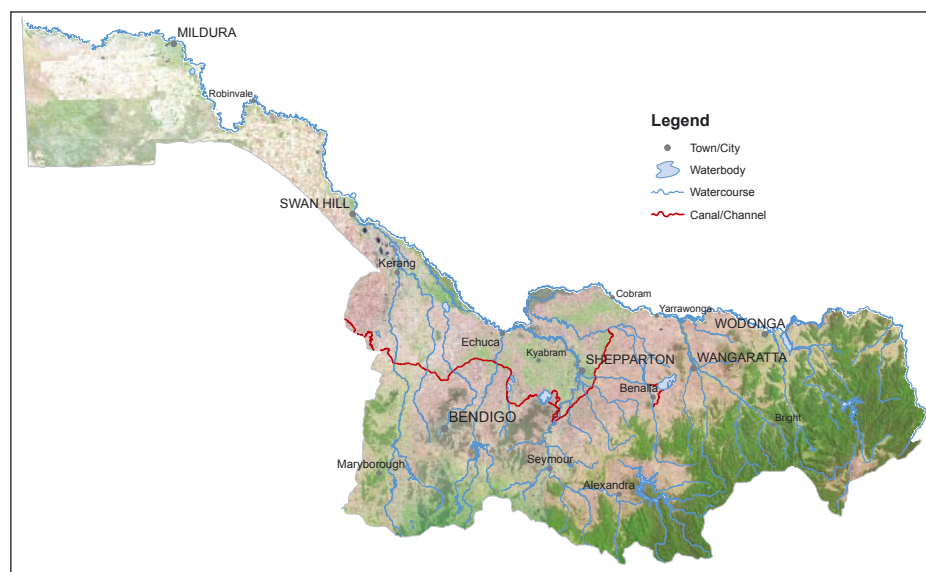
© The State of Victoria Department of Sustainability and Environment 2008

This publication is copyright. No part may be reproduced by any process except in accordance with the provisions of the Copyright Act 1968.

#### Disclaimer

This publication may be of assistance to you but the State of Victoria and its employees do not guarantee that the publication is without flaw of any kind or is wholly appropriate for your particular purposes and therefore disclaims all liability for any error, loss or other consequence which may arise from you relying on any information in this publication.

**Figure 1 Area included in the Northern Region Sustainable Water Strategy**



#### Key project milestones:

- ▾ Discussion paper release: January 2008
- ▾ Draft strategy release: mid-2008
- ▾ Final strategy release: early 2009

### Managing Our Water Resources

The Northern Region has been built on a foundation of reliable water supplies from the River Murray and its tributaries. This is a key factor in the region's ongoing prosperity.

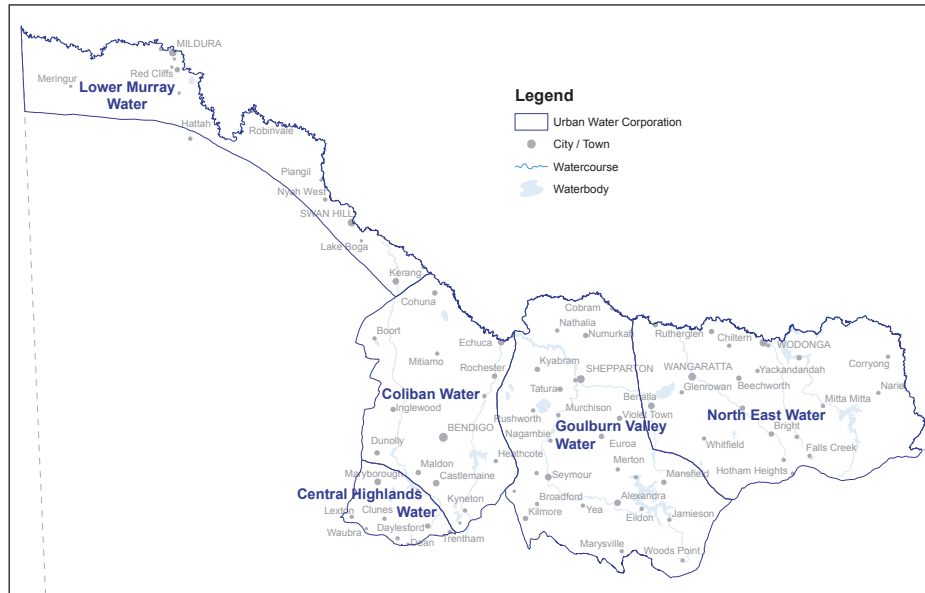
The Region includes a highly integrated system of natural waterways and manmade channels, pipes, dams and weirs. Storages built over the past 150 years, including Dartmouth, Eildon and Hume, collectively have the capacity to store 12,116 billion litres of water. These storages have allowed us to control our water resources and improve reliability of supply for all water users, including the environment.

The Region's natural and built infrastructure supplies irrigation, general agricultural production, towns and industry.

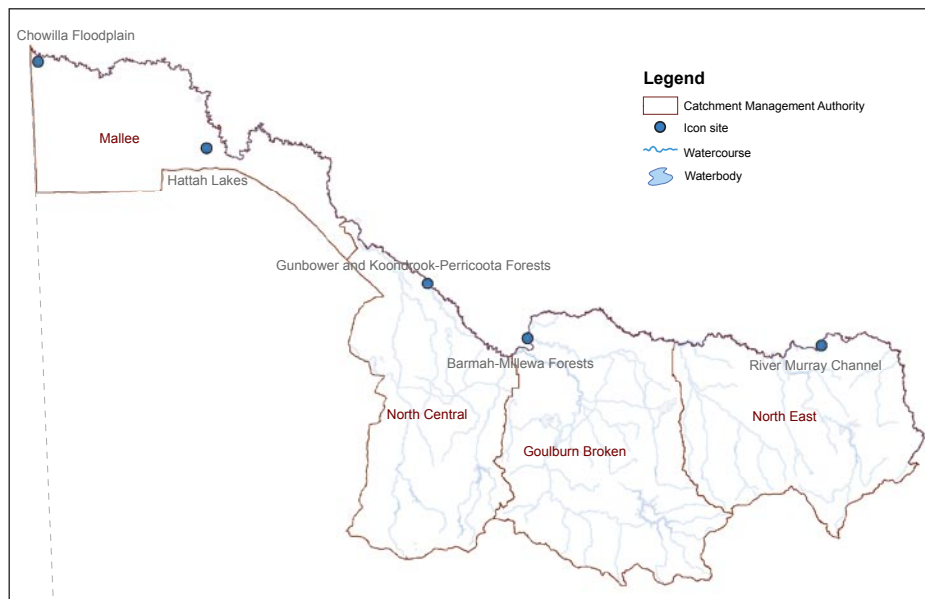
Town water supplies are managed and delivered by regional urban water corporations, while water for agriculture and irrigation is managed by rural water corporations. Catchment management authorities are the caretakers of river health and deliver waterway, regional drainage and floodplain management services.

The Northern Region represents Victoria's share of the Murray-Darling Basin, a unique resource that spans several states. The Murray-Darling Basin is managed under the guidelines of the Murray-Darling Basin Commission (1987), and the National Water Initiative. The National Water Initiative was a 2004 Council of Australian Governments (COAG) agreement to achieve a nationally compatible market and regulatory system to manage water resources for rural and urban use in a manner that optimised economic, social and environmental outcomes. The Victorian Government has been fully supportive of these cooperative arrangements.

**Figure 2 Water corporation and catchment management authority boundaries in the Northern Region**



**Figure 3 Catchment management authority boundaries in the Northern Region**



### Further information

Information on the Northern Region Sustainable Water Strategy is available from the Department of Sustainability and Environment's customer service centre on 136 186 or visit the website at [www.dse.vic.gov.au](http://www.dse.vic.gov.au)

To find out more about local water services and planning, contact your water corporation or CMA:

#### **Goulburn-Murray Water**

[www.g-mwater.com.au](http://www.g-mwater.com.au)  
(03) 5833 5500

#### **Lower Murray Water**

[www.srwa.org.au](http://www.srwa.org.au)  
(03) 5051 3400 (Head Office)

#### **Coliban Water**

[www.coliban.com.au](http://www.coliban.com.au)  
1300 363 200

#### **Goulburn Valley Water**

[www.gvwater.vic.gov.au](http://www.gvwater.vic.gov.au)  
(03) 5832 0400

#### **Central Highlands Water**

[www.chw.net.au](http://www.chw.net.au)  
(03) 5320 3100 (Head Office)

#### **North East Water**

[www.nerwa.vic.gov.au](http://www.nerwa.vic.gov.au)  
1300 361 622

#### **FMIT**

[www.fmit.com.au](http://www.fmit.com.au)  
(03) 5023 8315

#### **Mallee CMA**

[www.malleecma.vic.gov.au](http://www.malleecma.vic.gov.au)  
(03) 5051 4377

#### **North Central CMA**

[www.nccma.vic.gov.au](http://www.nccma.vic.gov.au)  
(03) 5448 7124

#### **Goulburn Broken CMA**

[www.gbcma.vic.gov.au](http://www.gbcma.vic.gov.au)  
(03) 5820 1100 (Head Office)

#### **North East CMA**

[www.necma.vic.gov.au](http://www.necma.vic.gov.au)  
(02) 6043 7600

Information regarding planning and management in the Murray-Darling Basin is available from:

#### **Murray Darling Basin Commission**

[www.mdbc.gov.au](http://www.mdbc.gov.au)  
(02) 6279 0100

### Submissions

Written submissions on the Discussion Paper are due by 17 March 2008 and can be sent or emailed to:

Department of Sustainability and Environment

ATTENTION:

Sustainable Water Strategies Branch,  
Office of Water  
PO Box 500

East Melbourne VIC 3002

Email: [regional.sws@dse.vic.gov.au](mailto:regional.sws@dse.vic.gov.au)