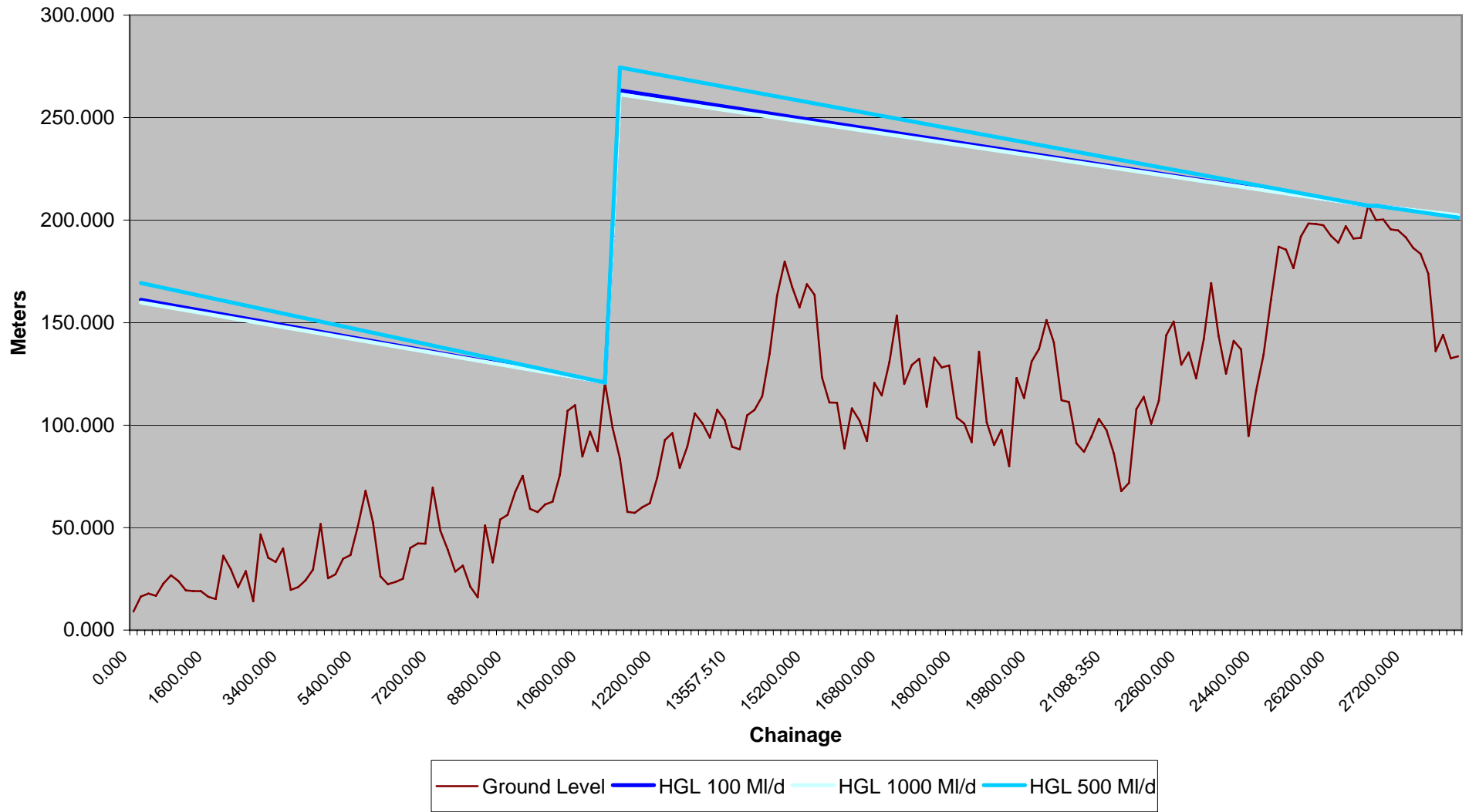


Figure 15: Option 1B - Templestowe to Little Watsons Creek



324000

331000

338000

345000

352000

5835000

5835000

5830000

5830000

5825000

5825000

5820000

5820000

5815000

5815000

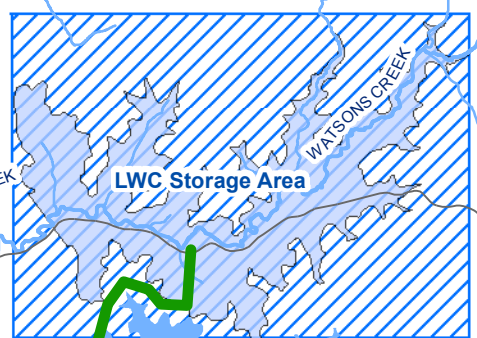
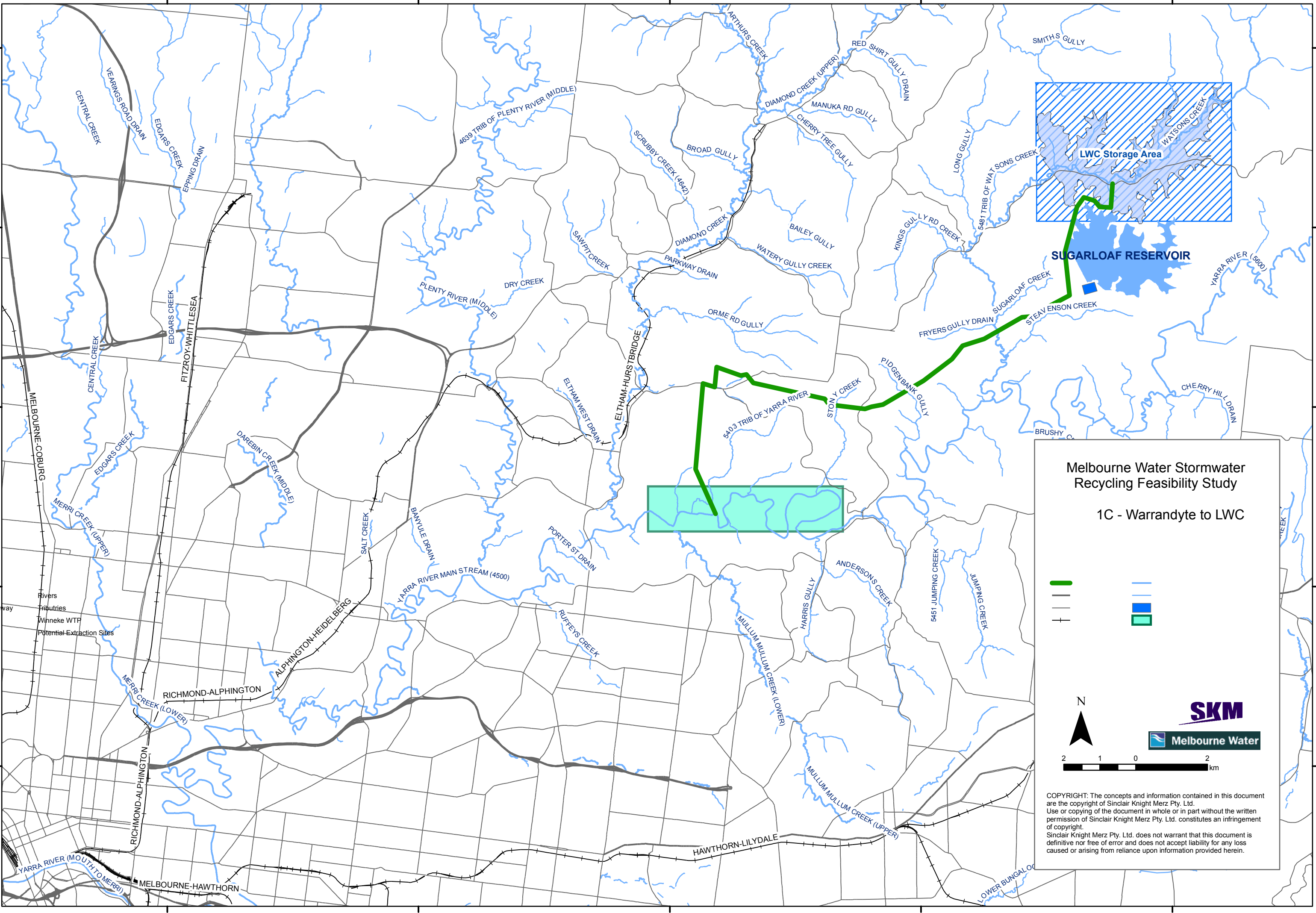
324000

331000

338000

345000

352000

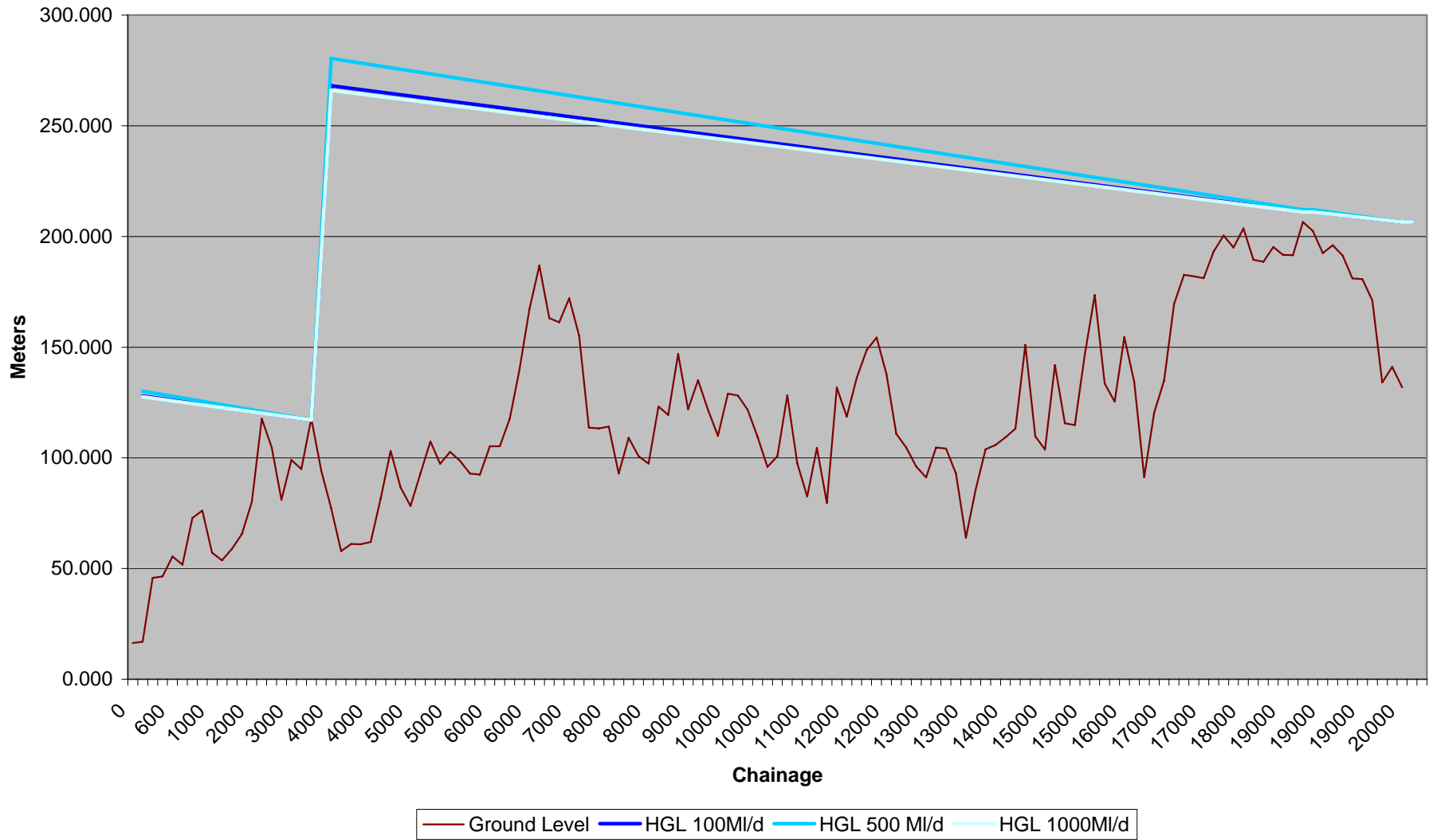


**Melbourne Water Stormwater Recycling Feasibility Study**

**1C - Warrandyte to LWC**

COPYRIGHT: The concepts and information contained in this document are the copyright of Sinclair Knight Merz Pty. Ltd. Use or copying of the document in whole or in part without the written permission of Sinclair Knight Merz Pty. Ltd. constitutes an infringement of copyright. Sinclair Knight Merz Pty. Ltd. does not warrant that this document is definitive nor free of error and does not accept liability for any loss caused or arising from reliance upon information provided herein.

Figure 17: Option 1C - Warrandyte to Little Watsons Creek



324000

331000

338000

345000

352000

5830000

5830000

5825000

5825000

5820000

5820000

5815000

5815000

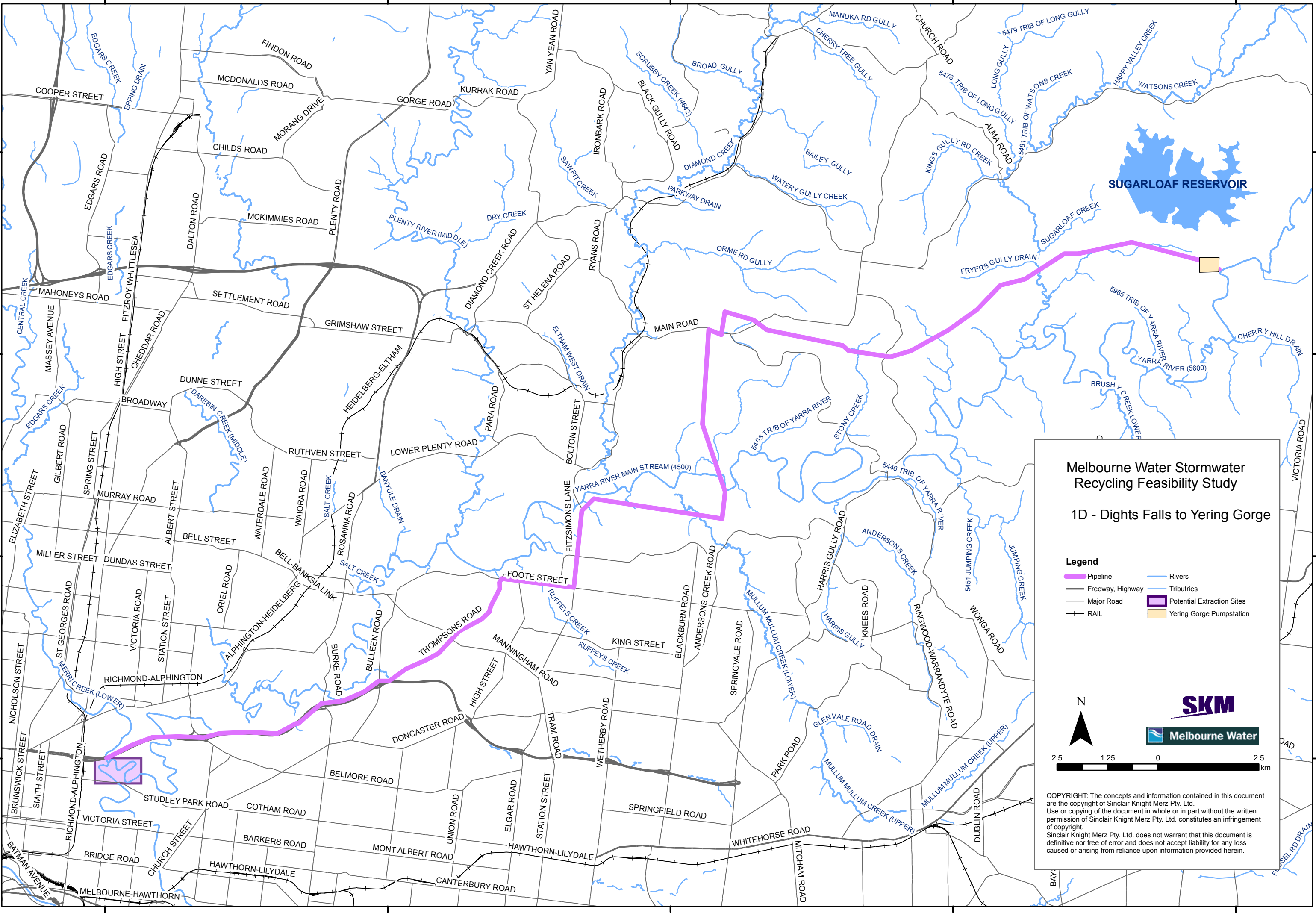
324000

331000

338000

345000

352000



### Melbourne Water Stormwater Recycling Feasibility Study

#### 1D - Dights Falls to Yering Gorge

**Legend**

- Pipeline
- Freeway, Highway
- Major Road
- RAIL
- Rivers
- Tributaries
- Potential Extraction Sites
- Yering Gorge Pumpstation

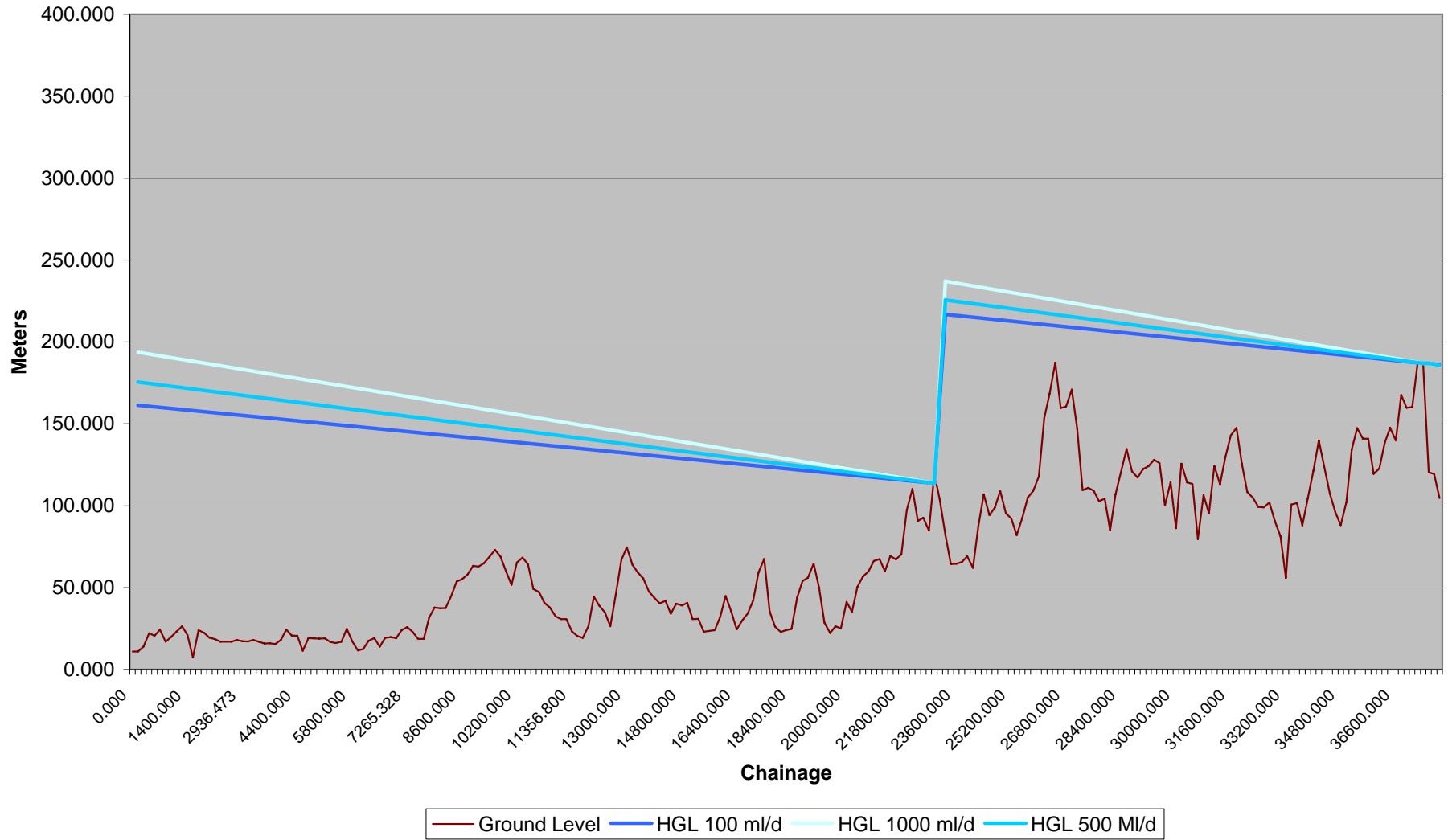
**SKM**  
Melbourne Water

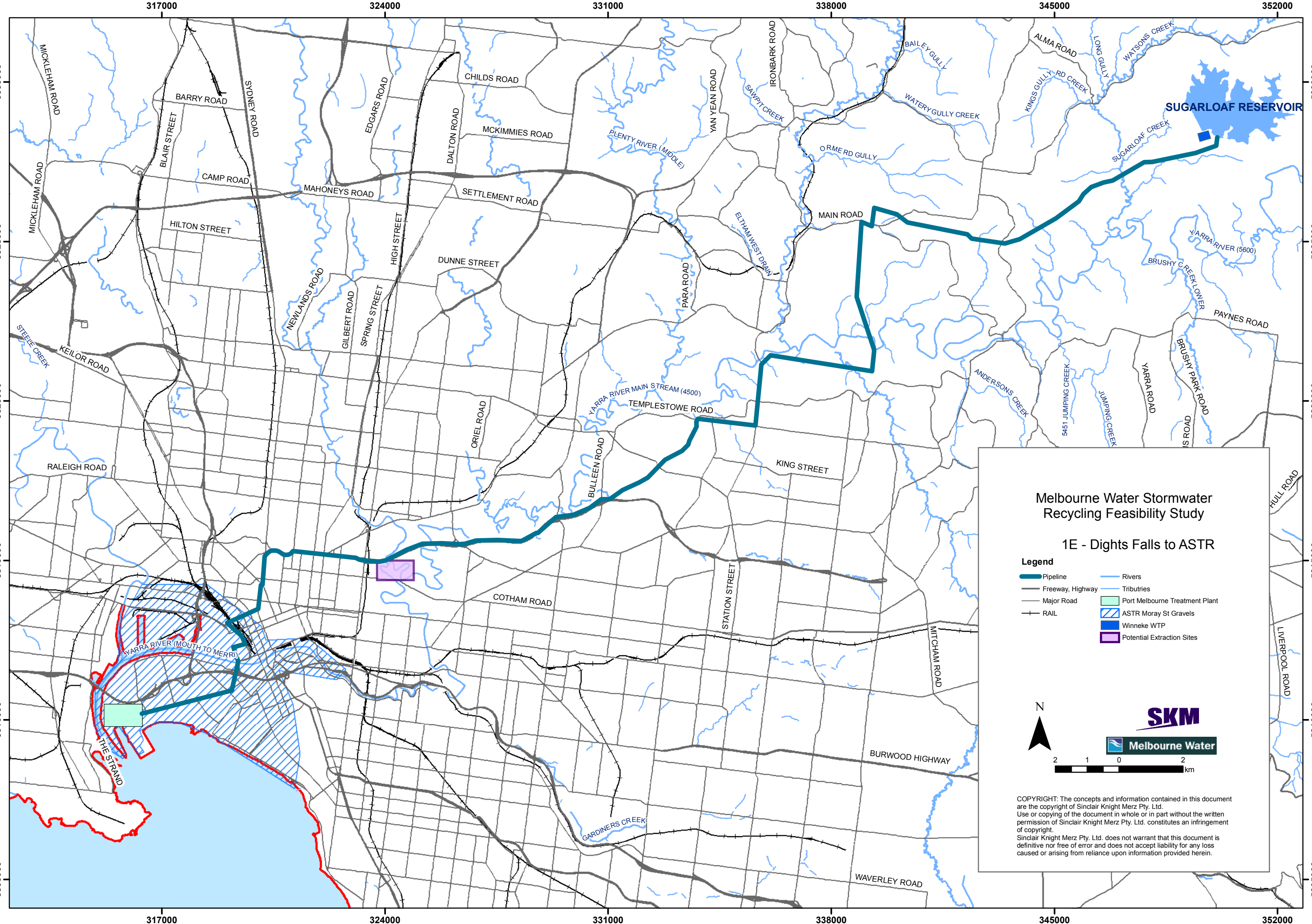
N

2.5 1.25 0 2.5 km

COPYRIGHT: The concepts and information contained in this document are the copyright of Sinclair Knight Merz Pty. Ltd. Use or copying of the document in whole or in part without the written permission of Sinclair Knight Merz Pty. Ltd. constitutes an infringement of copyright. Sinclair Knight Merz Pty. Ltd. does not warrant that this document is definitive nor free of error and does not accept liability for any loss caused or arising from reliance upon information provided herein.

Figure 19: Option 1D - Dights Falls to Yering Gorge

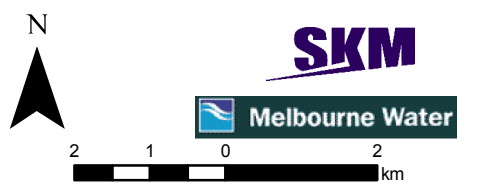




### Melbourne Water Stormwater Recycling Feasibility Study

#### 1E - Dights Falls to ASTR

- Legend**
- Pipeline
  - Freeway, Highway
  - Major Road
  - RAIL
  - Rivers
  - Tributaries
  - Port Melbourne Treatment Plant
  - ASTR Moray St Gravels
  - Winkeke WTP
  - Potential Extraction Sites



**SKM**  
**Melbourne Water**

COPYRIGHT: The concepts and information contained in this document are the copyright of Sinclair Knight Merz Pty. Ltd. Use or copying of the document in whole or in part without the written permission of Sinclair Knight Merz Pty. Ltd. constitutes an infringement of copyright. Sinclair Knight Merz Pty. Ltd. does not warrant that this document is definitive nor free of error and does not accept liability for any loss caused or arising from reliance upon information provided herein.

Figure 21: Option 1E - Dights Falls to ASTR to Sugarloaf

